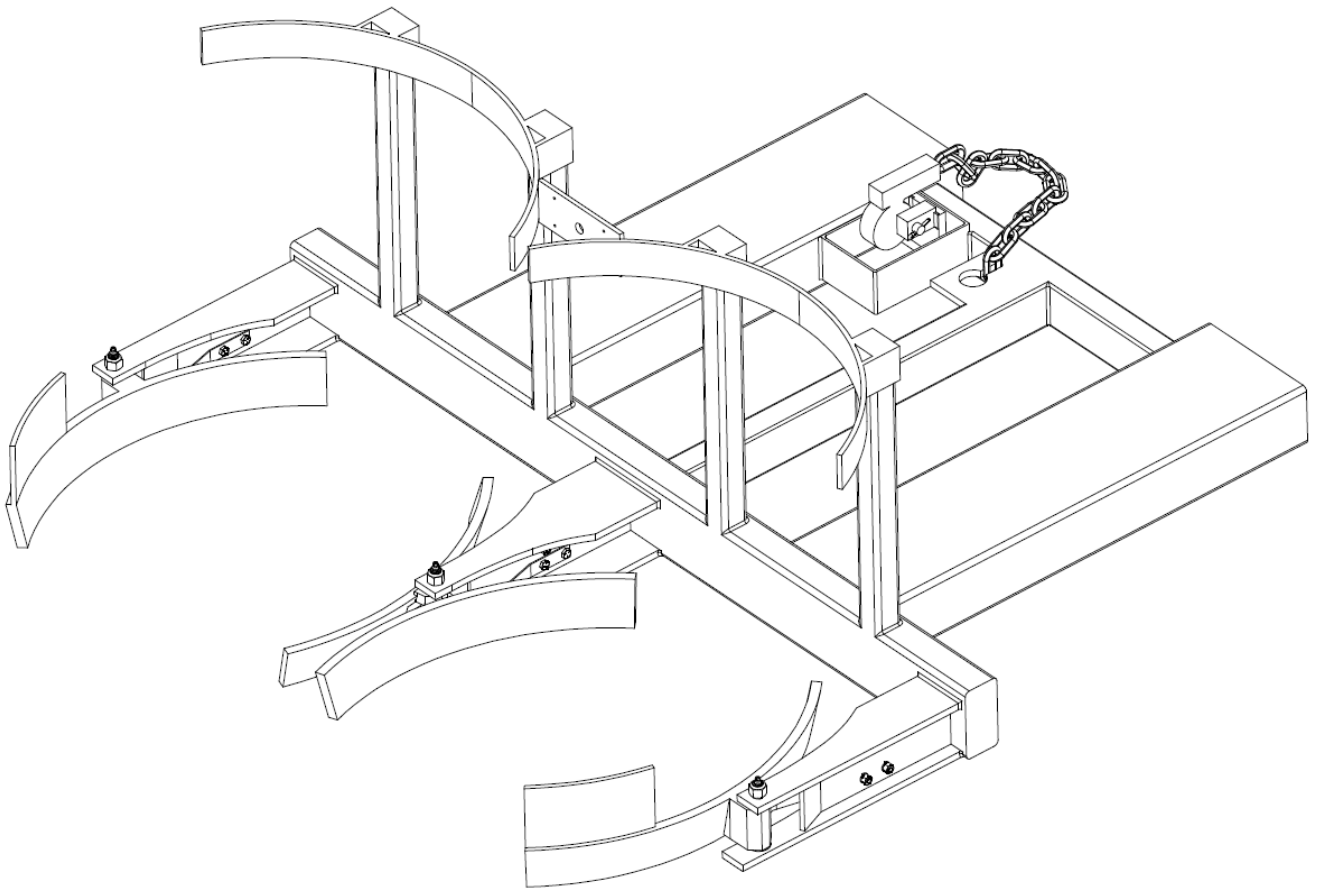


# *Easy Lift Equipment Co., Inc.*

2 Mill Park Court, Newark, Delaware 19713 - Phone: 800-233-1800 / 302-737-7000

## **EAGLE-POLY GRIP™ OPERATING INSTRUCTIONS**





# EAGLE-POLY GRIP (EPG) ATTACHMENT

## INTRODUCTION

Eagle-Poly Grip attachments utilize automatic spring-loaded arms for handling European style plastic drums which have larger lids and chimes making traditional handling methods difficult. The EPG attachment solves this issue by picking these drums up from the tapered bottom. This method is necessary when loading or unloading drums that are triple stacked in overseas shipping containers with minimal clearance between the tops of drums and the container ceiling. The fork pockets and safety chain provide a quick and easy connection to any lift truck. The specification plate affixed to each attachment provides the following information: model number, serial number, attachment weight, and lifting capacity. **Please verify with your local forklift dealer that your lift truck is certified and tagged properly for this attachment.**

This manual contains information to instruct you on the proper use and maintenance of your Eagle-Poly Grip attachment. This manual should be available to all personnel working with the machine. Follow the maintenance procedures carefully to ensure a safe and reliable service life. Do not operate your equipment until you have read and understood these instructions.

## COMISSIONING YOUR EPG ATTACHMENT

1. Remove all packing materials, protective strapping, and wood shipping blocks.
2. Perform a visual inspection of the entire unit for damage.
3. Perform any necessary assembly based on the assembly diagrams located in this manual.
4. Drive the lift truck to position the forks inside the attachment.
5. Secure the attachment to the lift truck by connecting the safety chain to the forklift carriage.

## DAILY SAFETY INSPECTION

**Do not operate your EPG attachment if you notice any unsafe condition(s) that may have been caused by an accident or malfunction. Immediately report this condition to your supervisor.**

1. Perform a visual inspection, checking for loose or damaged springs and arms.
2. Ensure that safety chain is properly attached to carriage.
3. Ensure the operator has read the manual and is properly trained to use the attachment.
4. Observe the condition of the equipment for any other malfunction or defect.

**If any of these tests are failed, tag the unit properly to keep it out of service until the problem has been resolved.**

## SAFETY PRACTICES

1. Do not lift loads that exceed the rated capacity of the unit.
2. During transportation, the drum(s) should only be lifted to a height that is necessary for proper floor clearance.
3. Keep hands and feet clear of the arms, lifting area in front of the unit, and the area underneath an elevated drum.
4. Be certain the clamping arms have made a secure connection and the drum is resting against the curved back rest before attempting to move or transport a load.

## WARNINGS

**WARNING:** Do not lift or suspend loads over people. Stay clear of suspended loads.

**WARNING:** Do not attempt to overload the attachment over its rated capacity, or raise the drum(s) beyond its maximum lifting height.

**WARNING:** Never transport the attachment at its maximum lifting height.

**WARNING:** Keep hands and feet away from the pinch points; clamp and springs.

**WARNING:** Do not leave unit outside in rain, snow, etc., for extended periods.

**WARNING:** Never leave the unit unattended with a suspended load.

**WARNING:** Do not make alterations or modifications to the unit without Easy Lift Equipment authorization.

## EAGLE-POLY GRIP ATTACHEMENT OPERATING INSTRUCTIONS

### TO ENGAGE AND TRANSPORT DRUMS:

1. Lower the attachment to a level that matches the lower tapered sections of the drum(s).
2. Drive the lift truck forward until the drum(s) rest firmly against the back rest.
3. Tilt the lift truck carriage back toward the operator.
4. Raise the attachment to fully engage the drum(s). The lift truck can now be driven to transport the drum(s).

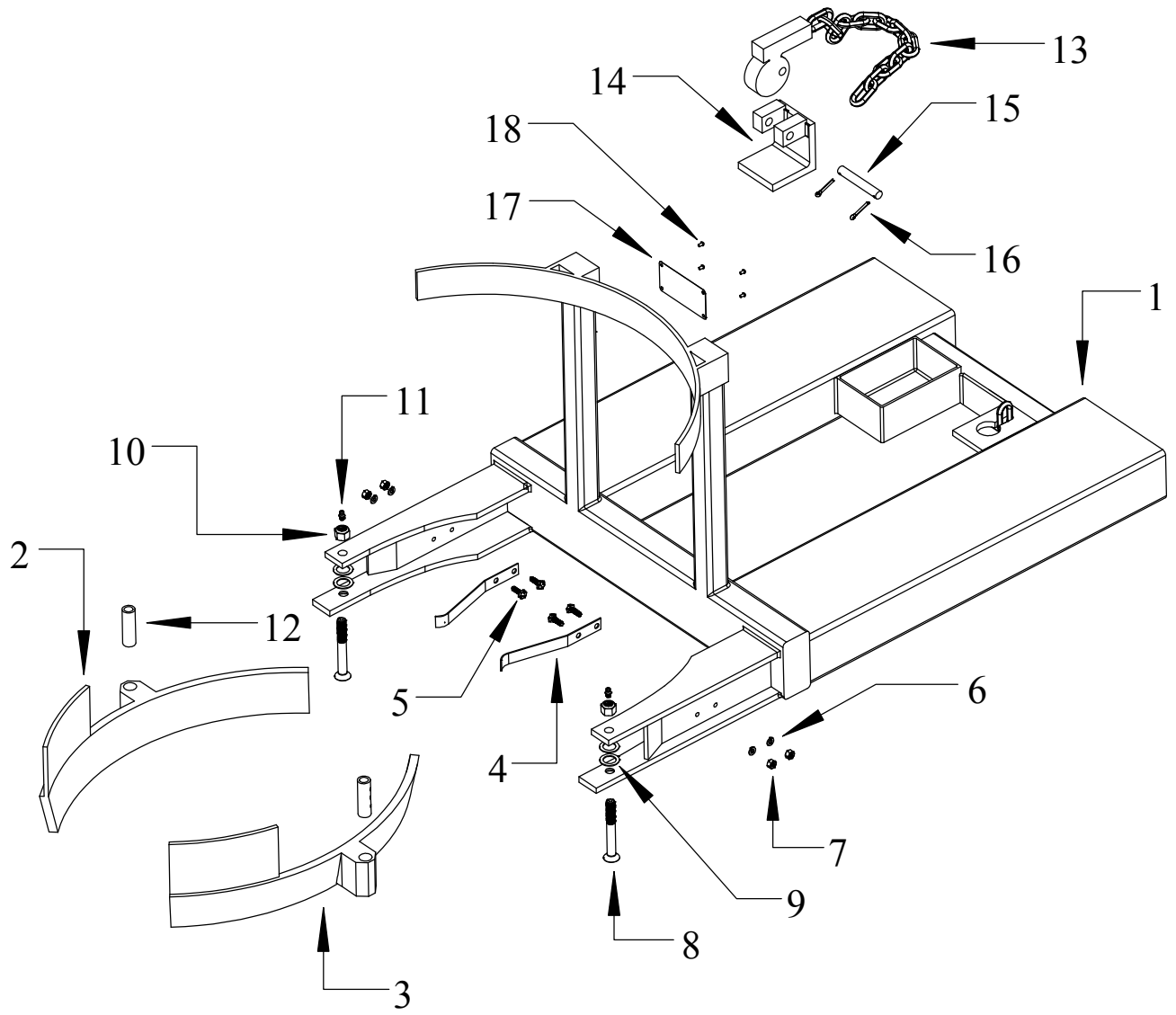
### TO RELEASE DRUM(S):

1. Lower drums to floor, pallet or other level surface. Tilt lift truck carriage forward so the bottom of the drum is even with the flat surface.
2. Slowly back away from drum(s) until arms disengage the drum completely.

## Eagle-Poly Grip Attachment Maintenance Checklist

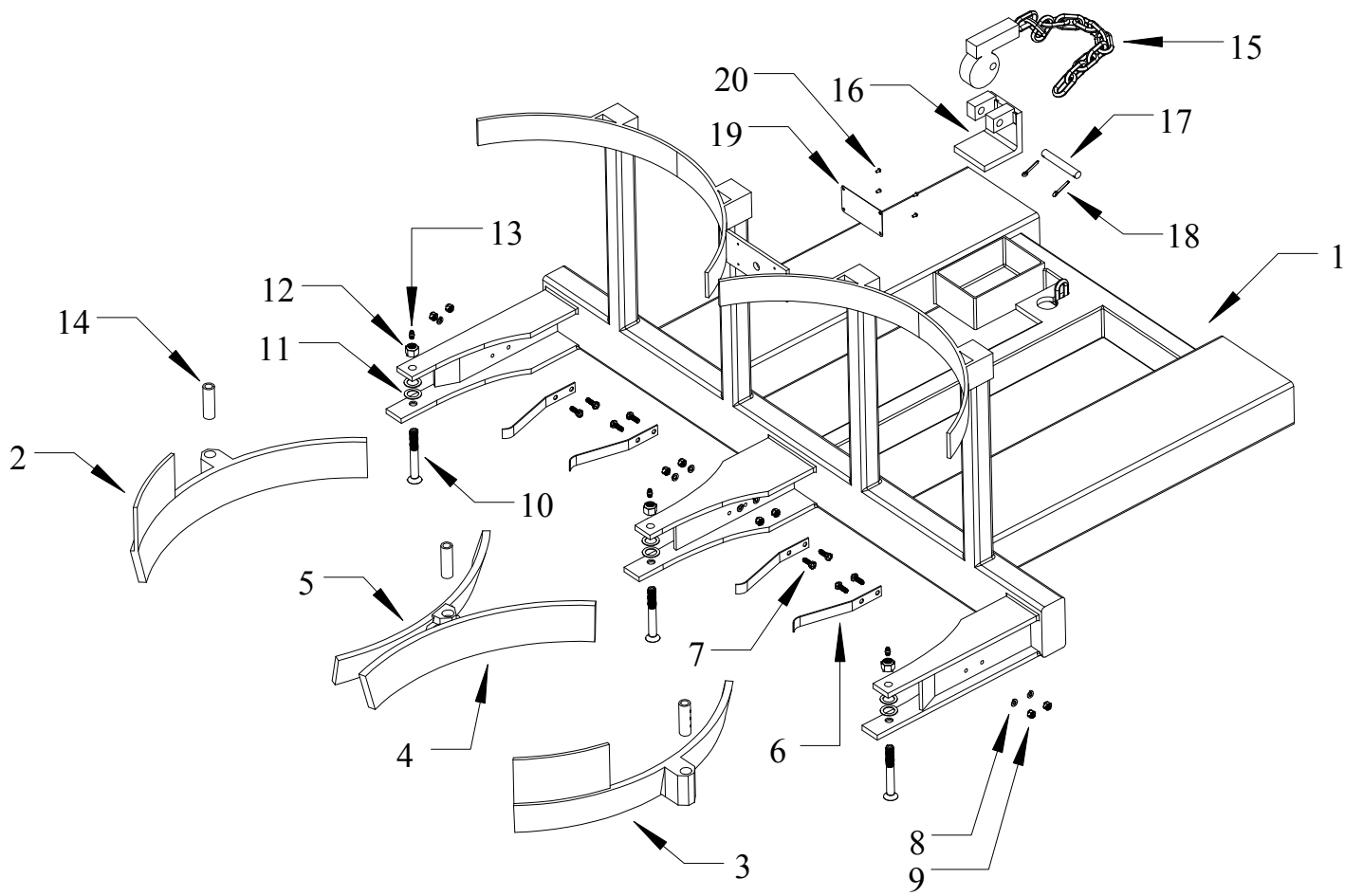
			Maintenance Intervals			
			1 Mo	6 Mo	12 Mo	3 Yrs.
<b>Structural Steel:</b>	1.1	Check for cracked welds on frame		X		
	1.2	Check to verify that specification data plates are affixed to the attachment			X	
<b>Clamping Arms:</b>	2.1	Pump grease into fittings on arm pivots		X		
	2.2	Ensure clamping arms return to open position after releasing a drum		X		

\*\*The maintenance intervals refer to normal service conditions. In case of aggravated conditions, the intervals must be reduced/increased as required.



**EAGLE-POLY GRIP™ EPG1  
PARTS LIST**

<u>ITEM</u>	<u>PART NO.</u>	<u>PRICE EACH</u>	<u>DESCRIPTION</u>	<u>QTY</u>
1	9311	\$ 950.00	EPG1 Frame	1
1	9311-SS	\$ 4,500.00	Stainless Steel EPG1 Frame	1
2	7312R	\$ 525.00	Outer Right Saddle (from operators perspective)	1
2	7312R-SS	\$ 2,450.00	Stainless Steel Outer Right Saddle (from operators perspectiv	1
3	7312L	\$ 525.00	Outer Left Saddle (from operators perspective)	1
3	7312L-SS	\$ 2,450.00	Stainless Steel Outer Left Saddle (from operators perspective	1
4	5406	\$ 28.00	Flat Spring	2
5	1/4-20 x 3/4 HHCS	\$ 0.20	1/4-20 x 3/4 Hex Head Cap Screw Grade 5 (zinc)	4
5	1/4-20 x 3/4 HHCS-SS	\$ 0.45	1/4-20 x 3/4 Hex Head Cap Screw (stainless steel)	4
6	1/4 LW	\$ 0.85	1/4 Lock Washer (zinc)	4
6	1/4 LW-SS	\$ 1.50	1/4 Lock Washer (stainless steel)	4
7	1/4-20 HN	\$ 0.10	1/4-20 Finished Hex Nut (zinc)	4
7	1/4-20 HN-SS	\$ 0.85	1/4-20 Finished Hex Nut (stainless steel)	4
8	6316	\$ 23.50	1/2" 13 UNC x 4 FHHSC Screw	2
9	98126A700	\$ 2.50	Round Shim .048"thick, 3/4"ID, 1-1/8" OD, Stainless Steel	4
10	1/2-13 NLN	\$ 0.50	1/2-13 Nylon Locking Nut	2
10	1/2-13 NLN-SS	\$ 1.00	1/2-13 Nylon Locking Nut (Stainless Steel)	2
11	7916	\$ 1.00	Grease Fitting	2
12	85001	\$ 3.25	1/2" (Diameter) Bushing	2
13	504	\$ 88.00	Safety Chain & Cam Lock Assembly	1
14	0504A	\$ 25.00	Clamp, Cam Lock (zinc)	1
15	4006-1	\$ 16.50	Pin, Cam Lock	1
16	6006-CP	\$ 0.35	Cotter Pin, 5/32" x 1" (zinc)	2
17	MCL007031	\$ 8.00	Specification Plate	1
18	6 x 1/4 RUDS-SS	\$ 0.15	6 x 1/4 Round Head U Drive Screw (stainless steel)	4





**EAGLE-POLY GRIP™ EPG2  
PARTS LIST**

<u>ITEM</u>	<u>PART NO.</u>	<u>PRICE EACH</u>	<u>DESCRIPTION</u>	<u>QTY</u>
1	9312	\$ 1,450.00	EPG2 Frame	1
1	9312-SS	\$ 6,900.00	Stainless Steel EPG2 Frame	1
2	7312R	\$ 525.00	Outer Right Saddle (from operators perspective)	1
2	7312R-SS	\$ 2,450.00	Stainless Steel Outer Right Saddle (from operators perspectiv	1
3	7312L	\$ 525.00	Outer Left Saddle (from operators perspective)	1
3	7312L-SS	\$ 2,450.00	Stainless Steel Outer Left Saddle (from operators perspective	1
4	8312L	\$ 525.00	Inner Left Saddle (from operators perspective)	1
4	8312L-SS	\$ 2,450.00	Stainless Steel Inner Left Saddle (from operators perspective)	1
5	8312R	\$ 525.00	Inner Right Saddle (from operators perspective)	1
5	8312R-SS	\$ 2,450.00	Stainless Steel Inner Right Saddle (from operators perspectiv	1
6	5406	\$ 28.00	Flat Spring	4
7	1/4-20 x 3/4 HHCS	\$ 0.20	1/4-20 x 3/4 Hex Head Cap Screw Grade 5 (zinc)	8
7	1/4-20 x 3/4 HHCS-SS	\$ 0.45	1/4-20 x 3/4 Hex Head Cap Screw (stainless steel)	8
8	1/4 LW	\$ 0.85	1/4 Lock Washer (zinc)	8
8	1/4 LW-SS	\$ 1.50	1/4 Lock Washer (stainless steel)	8
9	1/4-20 HN	\$ 0.10	1/4-20 Finished Hex Nut (zinc)	8
9	1/4-20 HN-SS	\$ 0.85	1/4-20 Finished Hex Nut (stainless steel)	8
10	6316	\$ 23.50	1/2" 13 UNC x 4 FHHSC Screw	3
11	98126A700	\$ 2.50	Round Shim .048"thick, 3/4"ID, 1-1/8" OD, Stainless Steel	6
12	1/2-13 NLN	\$ 0.50	1/2-13 Nylon Locking Nut	3
12	1/2-13 NLN-SS	\$ 1.00	1/2-13 Nylon Locking Nut (Stainless Steel)	3
13	7916	\$ 1.00	Grease Fitting	3
14	85001	\$ 3.25	1/2" (Diameter) Bushing	3
15	504	\$ 88.00	Safety Chain & Cam Lock Assembly	1
16	0504A	\$ 25.00	Clamp, Cam Lock (zinc)	1
17	4006-1	\$ 16.50	Pin, Cam Lock	1
18	6006-CP	\$ 0.35	Cotter Pin, 5/32" x 1" (zinc)	2
19	MCL007031	\$ 8.00	Specification Plate	1
20	6 x 1/4 RUDS-SS	\$ 0.15	6 x 1/4 Round Head U Drive Screw (stainless steel)	4