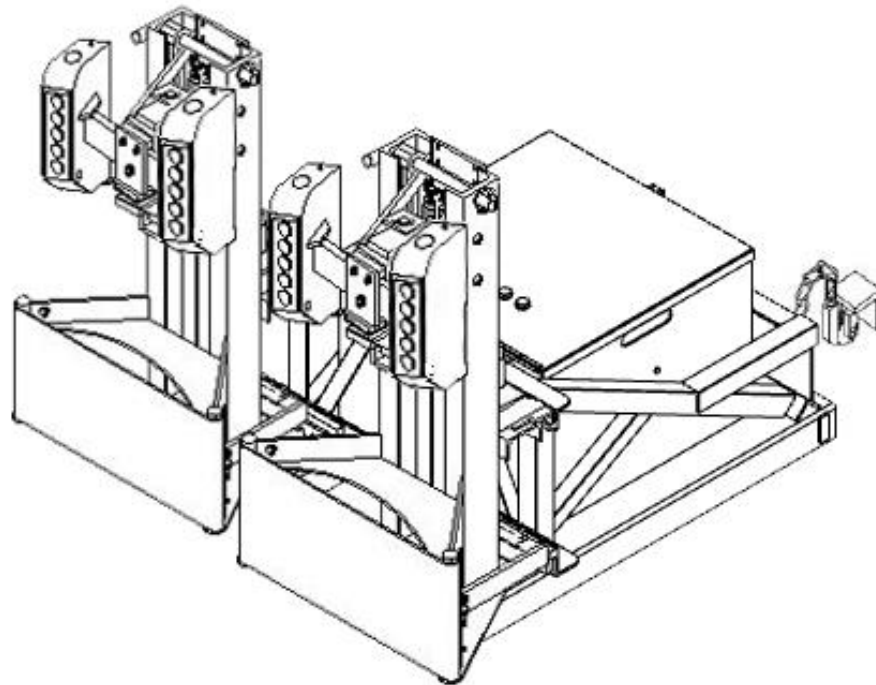


**OPERATING/MAINTENANCE
MANUAL**

FOR

**MODEL EG4MDC2-F
EMPTY DRUM HANDLING
ATTACHMENT**



EASY LIFT EQUIPMENT EMPTY DRUM HANDLING ATTACHMENTS EAGLE GRIP® MODEL EG4MDC2-F

INTRODUCTION

The Model EG4MDC2-F empty drum handling attachments utilize a heavy duty double magnetic clamping mechanism for handling 55-gallon size steel drums. The fork pockets and safety chain provide a quick and easy connection to any lift truck. The specification plate affixed to each attachment provides the following information: model number, serial number, attachment weight, and lifting capacity. **Please verify with your local forklift dealer that your lift truck, counter-balanced walkie stacker, or walkie straddle stacker is certified and tagged properly for this attachment.**

This manual contains information to instruct you on the proper use and maintenance of your empty drum handling attachment. This manual should be available to all personnel working with the machine. Follow the maintenance procedures carefully to ensure a safe and reliable service life. Do not operate your equipment until you have read and understood these instructions.

COMMISSIONING YOUR EAGLE GRIP EG4MDC2-F ATTACHMENT

1. Remove all packing materials, protective strapping, and wood shipping blocks, then remove the machine from the shipping pallet or crate.
2. Perform a visual inspection of the entire unit for damage.
3. Drive the lift truck to position the forks inside the attachment fork pockets and remove the attachment from the pallet.
4. Secure the attachment to the lift truck by connecting the safety chain to the forklift carriage. The end of the chain is equipped with a snap hook, so generally the chain is looped around the carriage and the snap hook is connected to the chain to form a loop.
5. **Lower the attachment on the forks and open the DC cabinet. Look at all the components inside the cabinet to ensure nothing came loose when the equipment was in transit.**
6. **Locate the key fobs which are stored in a plastic storage bag within the cabinet. Remove one of the four key fobs and close the cabinet. The key fobs have been programmed prior to shipping.**
7. **Locate the battery master disconnect switch on the outside of the cabinet and turn it to the “ON” position.**

Note: Each magnet has one green LED light on the top of the cabinet lid, another underneath the attachment frame and one additional small LED light on the bottom of the cabinet. There is also a small led blue light on the bottom of each magnet. The blue light only illuminates when the master disconnect switch is in the “ON” position.

8. **Press the key fob top button “ON” once to energize the magnets. All four green lights on the cabinet lid should illuminate. There are also four green lights on the bottom of the attachment which will also illuminate. Should they all not illuminate, press the same key fob button “ON” again until all are illuminated. Then press the button on the key fob “OFF” to de-energize the magnets. All lights should then be off. If a light remains lit, press the right key fob button “OFF” once again. Continue this on and off procedure until all light consistently turn on and off at the same time. Should there be a consistent issue with all of the lights going on or off, try a different key fob until there is no issue with this problem.**
(See remote key fob programming section to correct memory in faulty remote key fob)

DAILY SAFETY INSPECTION

Do not operate your Eagle-Grip empty drum handling attachment if you notice any unsafe condition(s) that may have been caused by an accident or malfunction. Immediately report this condition to your supervisor.

1. Perform a visual inspection, checking for loose or damaged parts from previous use.
2. Ensure that safety chain is properly attached to carriage.
3. Check the battery discharge indicator to be sure the attachment has sufficient charge for required usage.

Do not operate your empty drum handling attachment if you notice any unsafe condition(s) that may have been caused by an accident or malfunction from previous use. Immediately report any unsafe conditions or issues with the equipment to your supervisor. Tag the machine properly to keep others from using it until the issue has been corrected.

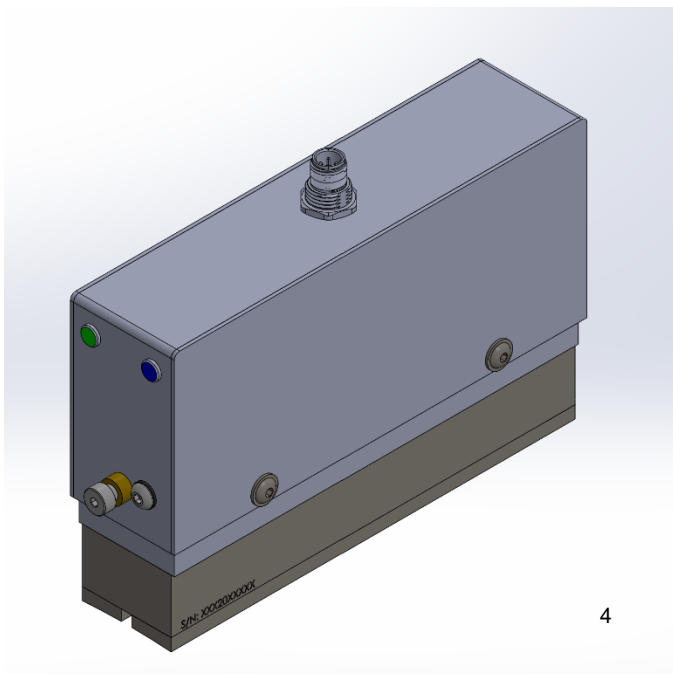
SAFETY PRACTICES

1. Do not lift drums that have any contents in them.
2. During transportation, the drum(s) should only be lifted to a height that is necessary for proper floor clearance.
3. Keep hands and feet clear of empty drums once they are lifted. Steel-toe safety shoes should be worn when manually handling empty steel drums.
4. Be certain the clamping head(s) have made a secure connection with the side of the drum below the chime of the drum before attempting to move or transport the empty drums.

WARNINGS

- WARNING:** Do not lift the attachment or suspend loads over people. Stay clear of suspended loads.
- WARNING:** Do not attempt to handle drum that have any contents in them.
- WARNING:** Never transport the attachment with drums being elevated more than a few inches above floor level.
- WARNING:** Do not leave attachment outside in rain, snow, etc., for extended periods.
- WARNING:** Never leave the attachment unattended with a suspended load.
- WARNING:** Never wash down the attachment. The attachment is designed to be wiped down by hand.
- WARNING:** Do not make alterations or modifications to the attachment without Easy Lift Equipment authorization.
- WARNING:** Prior to handling drums stacked three high in a trailer it is necessary to check the free lift of the lift truck mast. Be sure the lift truck mast and load backrest will not contact the ceiling of the trailer.
- WARNING:** Exercise care when lifting drums stacked three high in trailers. The upright portions on the attachment are about the same height as the empty drums when lifted. Be sure not to lift the attachment too high and cause any damage to the roof of the trailer or the attachment.

MAGNET



REMOTE KEY FOB



EAGLE GRIP® 4 EMPTY DRUM HANDLING ATTACHEMENT OPERATING INSTRUCTIONS

NOTE: The holding strength of the magnetics is dependent upon many factors. The heavier the gauge of the drum sidewall, the better magnetic attraction to the metal. Operator care in eliminating shock from traveling over dock plates and sharp turns should be exercised. Operators should strive to clamp empty drums once when unloading to reduce cosmetic abrasions where the magnets contact the drums. Magnets are equipped with replaceable wear shoes to protect the magnets themselves from wear. Wear shoes contact the drums and are powder coated to reduce cosmetic abrasions. Proper tension of the belts is another important factor in ensuring drums are held securely – essentially the belt must be positioned to ensure the drum is held vertical. The entire face of the magnet should be in full contact against the flat surface of the drum sidewall so that magnet is flush against the drum without any gaps at the top or bottom of the magnet. If gap is noticed between these two surfaces at the top of the magnet, the belt that rests against the lower side of the drum should be tightened. Belts will naturally stretch with use and may require periodic adjusting to correct drum position and ensure proper alignment of the magnets. Should a gap be noticed at the bottom of the magnet, the belt is too tight and should be loosened to remove the gap.

TO ENGAGE AND TRANSPORT CLOSED HEAD EMPTY STEEL DRUMS

1. With the attachment properly secured to the lift truck and the disconnect switch in the “ON” position, press the key fob button “ON” to illuminate all four green lights on top of the DC cabinet cover. There are four additional green lights on the bottom of the attachment which will also illuminate when the magnets are energized. In the event that all four lights do not illuminate, continue to press the key fob button “ON” until all four lights are illuminated. Do not attempt to grip empty drums unless all four green lights are illuminated.
2. When all four green lights are illuminated, the magnets are now energized to grip the drums. Level the forks on the lift truck. Center the attachment clamping mechanisms with center of drum(s). Drive the lift truck forward with the clamping mechanisms in a position to contact the empty drum(s). The clamping mechanism should make contact against the upper third of the drum, above the second rolled hoop or “W” hoop of the empty drum. The magnets will now engage the metal on the side on the empty drum. In situations where the trailer is not on the same plane as the warehouse floor it would be necessary for the lift truck operator to tilt the mast of lift truck forward or back to keep the empty drums in a vertical (not tilted) position.
3. Raise the lift truck forks slightly to elevate the drums and back away. When removing drums from trailers it is necessary to cross dock boards and ramps softly as shock from bouncing from trailer to warehouse areas can cause the empty drums to release from the magnets.
4. **To release the drums onto the floor, pallet or conveyor the operator must not have the lift truck carriage tilted forward or back. Doing so will only increase the chance of abrasions to the drums’ painted surface.** Lower the drums just enough to contact the floor, pallet or conveyor, then press the key fob button “OFF” to disengage the drums.

Do not back away until all four lights are no longer illuminated. Once released, the operator can back away from the released drums, then press the key fob button “ON” again to energized the magnets before entering the trailer to grip additional empty drums.

TO ENGAGE AND TRANSPORT OPEN HEAD EMPTY STEEL DRUMS

Open head steel drums with removable lids are wider than closed head drums. This requires one of the two mast assemblies on the carriage frame to be repositioned outward to widen the distance between the two masts assemblies by 1.6”. To widen the mast assemblies, lift the roll pin in the carriage lock pin on either of the two mast assemblies and slide the mast assembly outward until the carriage lock pin drops into the next slot in the carriage. This will increase the distance between the two masts by the necessary 1.6” required to handle open head steel drums. Only move one of the two mast assemblies, not both. Once this is done, follow the same instructions above for handling closed head steel drums. When necessary to handle closed head drums again, this procedure would be reversed to close the 1.6” gap.

Note: Drums with a third rolling hoop near the drums’ chime, such as a 17H drum, will not work with this attachment. There is not enough space between the second rolled hoop and the drums lid for the magnets to engage the drum.,

Note: All keys fobs are provided with a velcro tape attached to the back of the key fob. This enables the key fob to be attached in a convenient location in the lift truck for the operator without the need to be handheld.

CHARGING THE BATTERIES:

All EG4MDC2-F empty drum attachments are equipped with DC cabinet housing two large 12-volt AGM batteries wired in series (24-volt system) to provide the power supply for activating the magnets. Also inside of the DC cabinet is an automatic 24-volt charger. To charge the unit a polarized heavy gauge extension cord rated 12-3 15amp / 125 volt is required but not provided. To remove the attachment for charging:

1. Disconnect the safety chain securing the attachment to the lift truck, then remove the attachment from the lift truck. Turn off the disconnect switch on the side of the cabinet to the “OFF” position.
2. Open the cabinet lid, use a grounded medium heavy gauge extension cord and plug the power cord from the charger into the extension cord.
3. The charger will shut off when the batteries are fully charged. A battery discharge indicator located by the disconnect switch displays the state of charger for the batteries.

REMOTE KEY FOB REPROGRAMMING INSTRUCTIONS

ALL EG4MDC2-F ATTACHMENTS ARE PROVIDED WITH FOUR KEY FOBS

To Begin: With the attachment attached to the lift truck, elevate the attachment so the bottom of the magnets are at eye level. This makes the programming process more ergonomic for the operator rather than attempting to access the bottom of the magnets from floor level.

To Access the wireless teaching button: On the bottom side of every magnet there is an access hole and two small LED lights, one blue and one green. These small lights are helpful when reprogramming the key fobs. Use a 3mm Allen key to unthread the M5 cap screw on the bottom of each magnet.

To Pair a Remote with a Magnet: With the screw removed, inset the 3mm Allen key into the hole where the screw was removed until it touches the teach button inside the hole. Hold the button in for 2 seconds to put the receiver in pairing mode. Within a few seconds of releasing the teach button, push the key fob button “ON”. Then wait a few seconds for the key fob and magnet receiver to pair. Then, test the pairing by pushing the key fob button “ON” again. The green light on the magnet, the battery cabinet lid and underside of the attachment will illuminate.

Repeat this procedure until all four magnets have been paired with the same key fob.

Test the system by turning on and off all four magnets/green lights consistently.

If all four lights do not illuminate, continue to press the key fob button “ON” until all four lights are illuminated. If one or more magnets do not pair, repeat the pairing process with the magnet having the problem until all four magnets/green lights consistently turn on and off.

Re-closing the Magnet: When all programming is complete, insert all the M5 cap screw back into the bottom screw hole of each magnet and tighten until snug.

<p>NOTE: All Eagle-Grip® Attachments conform to OSHA standards. A metal plate, affixed to each attachment, provides model number, serial number, rated capacity and attachment weight. OSHA requires contacting the lift truck manufacturer for written approval of any attachment to be used on a lift truck. Should the metal plate be missing - call for a free replacement</p>

MODEL EG4MDC2-F EMPTY DRUM HANDLING ATTACHMENT SPECIFICATIONS:

<u>Model</u>	<u>Capacity</u> (lbs./kg.)	<u>Weight</u> (lbs./kg.)	<u>Height x Length x Width</u> (inches) (mm)		<u>Drums</u> <u>Handled</u>	<u>Description</u>
EG4MDC2-F	200/90.7	880/399.3	79x47x33	940x1194x838	1 or 2	Empty Drum Attachment

LOST LOAD CENTER: The distance from the tip of the forks to the center of the drum. 13” to center of drum measurement

VERTICAL CENTER OF GRAVITY: The distance measured from the bottom of the attachment to the center point on the mast at which it balances. 9.75” with a fork mount frame have 43” fork pockets.

HORIZONTAL CENTER OF GRAVITY: The distance or point that is measured between the beginning of the fork pockets to the end of the attachment which the attachment balances. 25.25”

FOR PARTS, SERVICE OR TECHNICAL QUESTIONS CALL:

Easy Lift Equipment
2 Mill Park Ct.
Newark, DE. 19713
800-233-1800 ; 302-737-7000
FAX: 302-737-7333
www.easylifteqpt.com
email: sales@easylifteqpt.com

**MAINTAINENCE CHECKLIST FOR MODEL EG4MDC2-F
EMPTY DRUM HANDLING ATTACHMENT:**

			Maintenance Intervals			
			1 Mo	6 Mo	12 Mo	3 Yrs.
Structural Steel:	1.1	Elevate the attachment to inspect for cracked welds			X	
	1.2	Check the safety chain for wear and missing parts	X			
	1.3	Check to verify that specification data plates are affixed to the attachment	X			
	1.4	Check the gas struts on the battery compartment lid	X			
Clamping Heads:	2.1	Inspect heads for loose or missing pins, springs, screws and replace as necessary	X			
	2.2	Check the magnet shoes for wear and replace when necessary.	X			
Belts:	3.1	Check belts for wear and adjust for proper tension	X			
Batteries:	4.1	Check battery voltage after charging		X		
	4.2	Check battery discharge indicator is functioning properly		X		
Charger:	5.1	Check that battery cables and battery hold-downs are tight	X			
	5.2	Check that wiring on all LED lights is intact	X			

Easy Lift Equipment Co., Inc.

2 Mill Park Court, Newark, Delaware 19713 - Phone: 800-233-1800 / 302-737-7000

EASY LIFT EQUIPMENT WARRANTY POLICY FOR MODELS WITH PREFIXES: ED/ER/EL/ELDR/EG & RCR

Easy Lift Equipment (“ELE”) warrants each new product to be free from factory material and workmanship defects, under normal use with proper maintenance, for a period of 12 months. Warranty coverage for this warranty period is provided by authorized dealers and includes parts. Labor is covered for the same periods of 12 months as outlined above. Please call ELE for the authorized repair dealer in your area.

ELE shall be the sole judge of the validity of any claim or defect and may elect to make any replacement or repair of any part thereof that it has agreed to be defective. Wearable Items such as: hoses, bearings, belts, brushes, seals, lift motors, clamp motors, relays, fuses, springs and wheels are wear items not covered under the warranty policy. ELE assumes no responsibility whatsoever to work done, parts replaced, or expenses incurred not specifically authorized by ELE. Normal maintenance or replacement of service items is not covered by this warranty. No warranty claims will be considered for customers with any delinquent outstanding balance. When batteries, battery chargers, scale printers or scale indicators are purchased from ELE with the equipment, the original manufacturer’s warranty applies.

WARRANTY LIMITATION/DISCLAIMERS:

Easy Lift Equipment reserves the right to void warranty coverage if the unit has been overloaded beyond rated capacity; damaged due to: abuse, misuse, neglect, accidents, freight damage, improper usage, improper repair, and/or improper storage; or any modification or repair conducted in a manner not approved by Easy Lift Equipment. Equipment used in freezers, abrasive, corrosive, and/or excessively moist conditions must be properly equipped for the environment to ensure the warranty is not voided. Warranty questions and claims should be directed to our customer service department. ELE customer service representatives will help you assess and resolve the claim or assist you in contacting the local authorized dealer or representative. The warranty described here shall constitute the sole remedy of the authorized dealer and/or the initial purchaser. ELE neither assumes nor authorizes any person to assume for it any other obligation or responsibility in connection with this product warranty. In no event shall ELE be responsible for direct, indirect, special or consequential damages or any other delay or any economic or commercial loss resulting from Easy Lift Equipment’s performance or non-performance under this warranty. This warranty is expressly in lieu of all warranties, obligations or responsibilities of ELE dealers or other authorized source, expressed, implied or statutory.

SUBMITTING CLAIMS:

To make a claim under this policy, please contact Easy Lift Equipment for assistance. We can be reached by calling 800-233-1800 ext. 4 for customer service or by writing to sales@easylifteqpt.com. Do not return defective parts unless a return authorization (RA) has been provided requesting the return. If requested, we will provide shipping information on how the part should be returned and bear the expense for the return shipping, if the part is proven to be defective. A copy of the work order made at the time of the repair and parts claimed under warranty may be requested for ELE’s inspection.

ORDERING PARTS:

Easy Lift Equipment’s parts are distributed through our customer service department and ship the same day as ordered whenever possible. You will be well taken care of whenever parts, adjustments or repairs are needed. **When contacting ELE, please be sure to state the model and serial number for the equipment.** There is no cost for electronic copies of replacement manuals, parts lists and other general information containing part numbers and nomenclature. Most manuals contain parts pricing, but it is not guaranteed to be valid as parts pricing can change at any time without notice. Any customer service representative can provide timely parts quotations upon request. Adherence to above procedure will save time and provide prompt assistance when it counts. You are of course always welcome to bring to us any questions, comments or recommendations pertaining to your Easy Lift Equipment products.

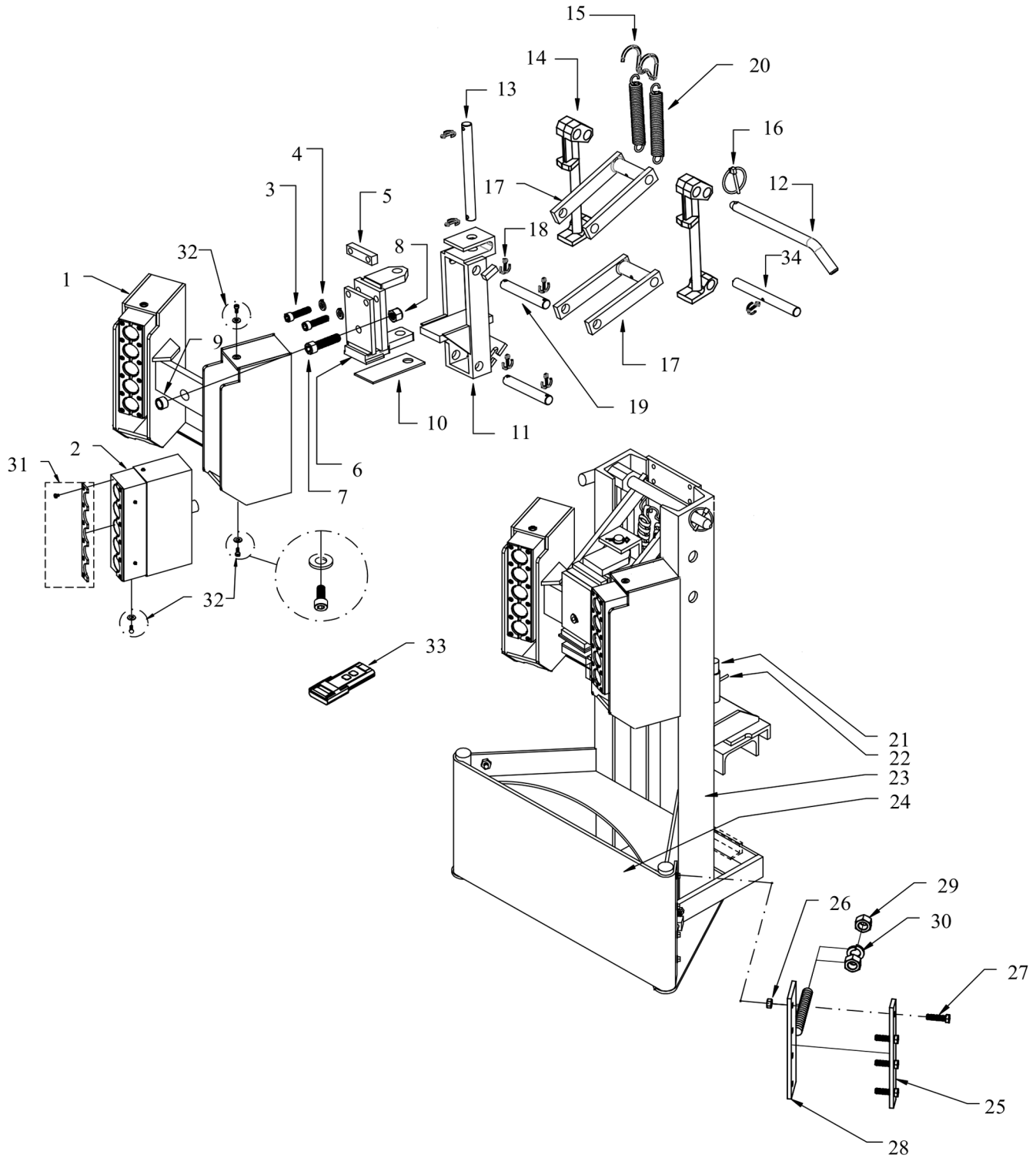
MANUFACTURER CONTACT INFORMATION:

Easy Lift Equipment Co., Inc.
2 Mill Park Ct.
Newark, DE 19713
Email: sales@easylifteqpt.com

Phone: 800-233-1800: 302-737-7000
Fax: 302-737-7333
Website: www.easylifteqpt.com

THIS PAGE INTENTIONALLY LEFT BLANK

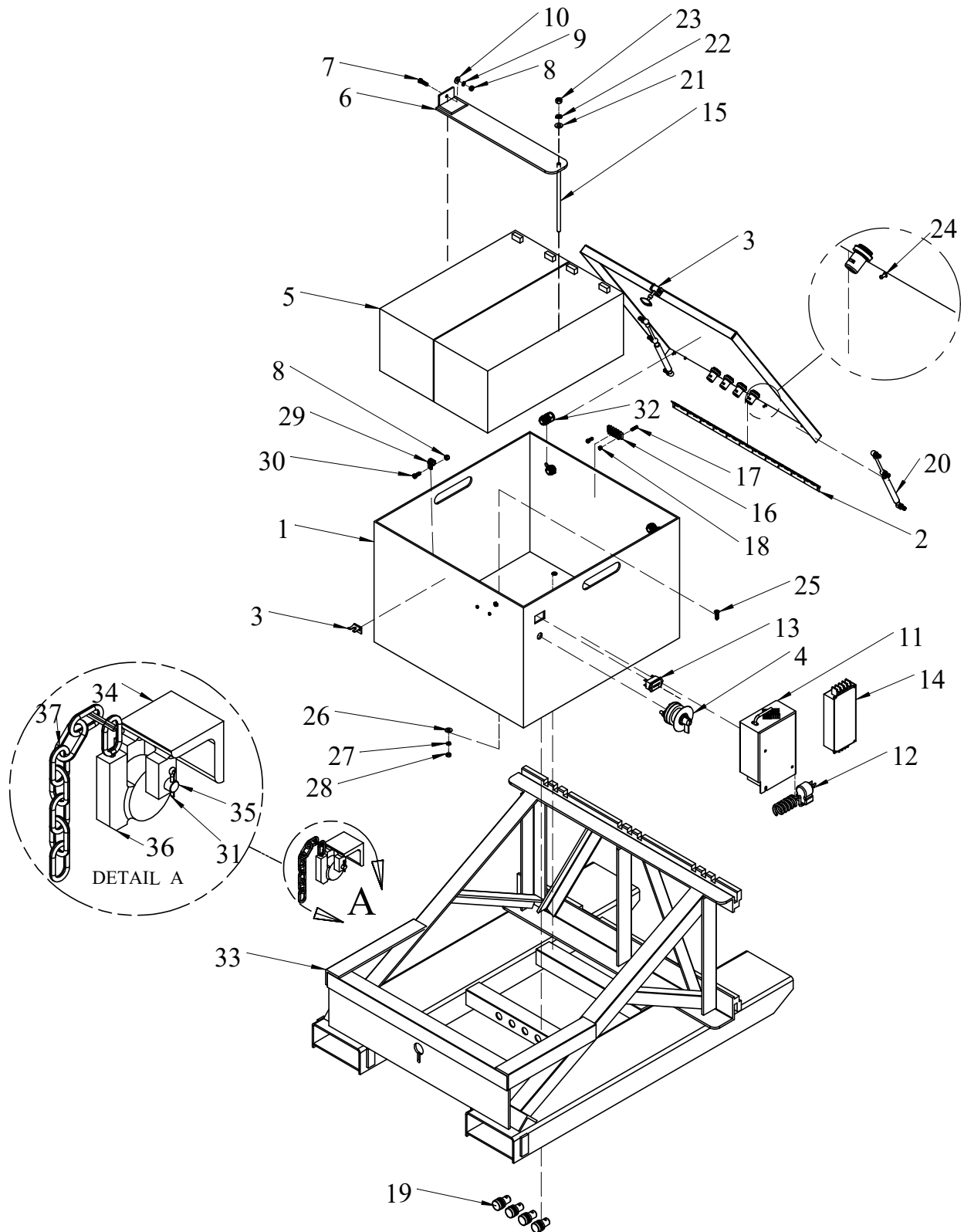
EAGLE - GRIP® EMPTY DRUM HANDLING CLAMPING MECHANISM ASSEMBLY



EAGLE-GRIP® EMPTY DRUM HANDLING CLAMPING MECHANISM PARTS LIST

<u>ITEM</u>	<u>PART NO.</u>	<u>DESCRIPTION</u>	<u>QTY</u>
1	3536202	Outer Housing (Stainless Steel - EG4 Magnet)	4
2	81401335	ELAY30x5 Magnet	4
3	3/8-16 x 1 1/2 SHCS	3/8-16 x 1 1/2 Socket Head Cap Screw Alloy Plated	4
4	3/8 LW	3/8 Lock Washer (zinc)	4
5	10203-4	Spacer, Universal Body (Black Powder Coating)	2
6	9202	Universal Body (Black Powder Coating)	2
7	1/2-13 x 2 SHCS	1/2-13 x 2 Socket Head Cap Screw (zinc)	2
8	1/2-13 NLN	1/2-13 Nylon Locking Nut	2
9	10001	Bushing, Housing Yolk Trunion (zinc)	2
10	16009-1	Wear Plate, Universal Carrier	2
11	7202	Universal Carrier (Black Powder Coating)	2
12	19106-1	Adjustment Pin (zinc)	2
13	15106-1	Pin, Universal Body to Carrier (zinc)	2
14	1700-7	Adjustment Slide (Black Powder Coating)	4
15	8996	Clevis Spring Hook (Stainless Steel)	2
16	HANG-2	3/16 x 1-3/4 Circle Cotter "Hang 2" (7016)	2
17	3202	EG3 & EG4 Upper Clevis (With 3202P Pin) - 6-1/8" Length	4
18	6006-CP	Cotter Pin, 5/32" x 1" (zinc)	18
19	17006-1	Pin, Clevis to Housing (HP10-370-E)	4
20	4206	Spring (zinc)	4
21	36006-1	Pin, Lock to Carriage	2
22	1506	Roll Pin for Carriage Lock # 360061 (zinc)	2
23	4902-3	Belt Cradle Frame - 3 hole (Belt Incl.)	2
24	2516	Composite Belt	2
25	12200-4	Belt Clamp (Yellow Powder Coating)	4
26	5/16-18 HN	5/16-18 Finished Hex Nut (zinc)	16
27	5/16-18 X 1 1/4 HHCS	5/16-18 x 1 1/4 Hex Head Cap Screw Grade 5 (zinc)	16
28	6902	Adjusting Rod for Belt Clamp	2
29	5/8-11 HN	5/8-11 Finished Hex Nut (zinc)	4
30	5/8 LW	5/8 Lock Washer (zinc)	2
31	88001101	Pole Shoe Kit, Easy Lift 30x5	4
32	88001244	Hardware Kit, Easy Lift 30x5	4
33	88001245	Magnet Remote Control Kit	1
34	3202P	Clevis Replacement Pin	2

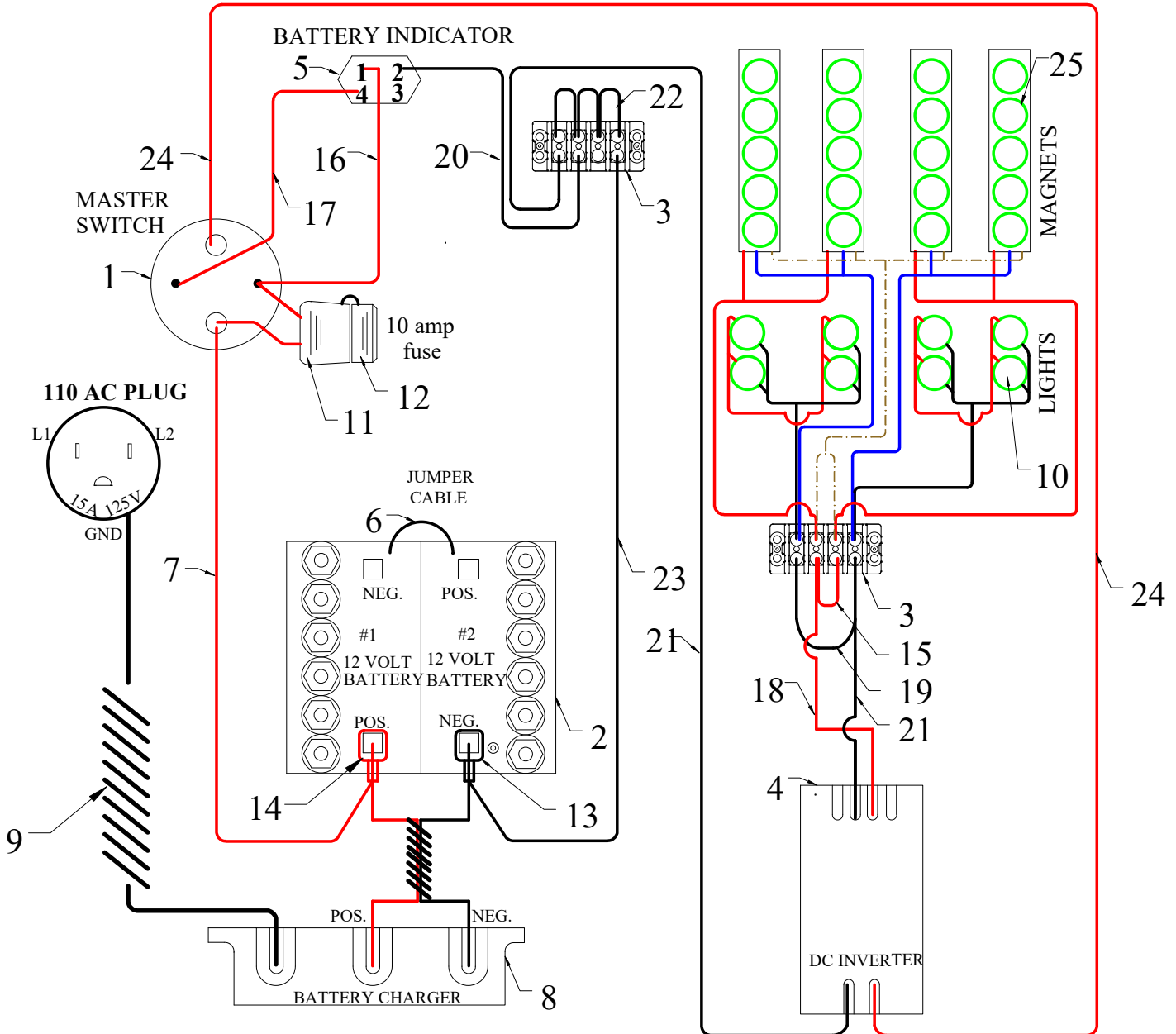
EAGLE - GRIP® EMPTY DRUM HANDLING ATTACHMENT DC BOX ASSEMBLY



EAGLE-GRIP® EMPTY DRUM HANDLING ATTACHMENT DC BOX PARTS LIST

<u>ITEM</u>	<u>PART NO.</u>	<u>DESCRIPTION</u>	<u>QTY</u>
1	3530510	DC Cabinet & Lid for Magnetic Drum Handling Attachment	1
2	CS24010628H	Cabinet Hinge	1
3	WJ202	Hood Latch (730-1750)	1
4	PA16529	Master Disconnect Switch	1
5	DC210-12	12 volt, 210 AH AGM Battery	2
6	3530509	Battery Bracket for Magnetic Drum Handling Attachment	1
7	1/4-20 x 1 HHCS	1/4-20 x 1 Hex Head Cap Screw Grade 5 (zinc)	1
8	1/4-20 NLN	1/4-20 Nylon Locking Nut (zinc)	3
9	1/4 LW	1/4 Lock Washer (zinc)	1
10	1/4 FW SAE	1/4 Flat Washer SAE (zinc)	1
11	51064543	Battery Charger 115v/24v 30A (Magnetic Empty Drum Attachments ONLY)	1
12	51045638	USA AC Cable	1
13	T101772	24 Volt Battery Discharge Indicator (906T24JWDGN)	1
14	RSD-200B-24	DC /DC Converter 1 Output 24V 8.4 A	1
15	3530508	3/8-16 x 10" ALL THREAD	1
16	7527K64	Terminal Block (Strip) 7/16", 4 circuits	2
17	8-32 x 3/4 PTHS	8-32 x 3/4 Phillips Truss Head Screw (zinc)	4
18	8-32 NLN	8-32 Nylon Locking Nut (zinc)	4
19	A18033000UX0419	Green Indicator Light AC/DC 24V, 22mm Panel Mount	8
20	FT0831-50N	50N Hydraulic Gas Strut Lift Support Door Cabinet Hinge	2
21	3/8 FW	3/8 Flat Washer (zinc)	1
22	3/8 LW	3/8 Lock Washer (zinc)	1
23	3/8-16 HN	3/8-16 Finished Hex Nut (zinc)	1
24	97447A025	Aluminum Blind Rivet w/Aluminum Mandrel 1/8, .188-.25"	10
25	5/16-18 x 1 FSHCS-SS	5/16-18 x 1 Flat Socket Head Cap Screw (stainless steel)	4
26	5/16 FW	5/16 Flat Washer (zinc)	4
27	5/16 LW	5/16 Lock Washer (zinc)	4
28	5/16-18 HN	5/16-18 Finished Hex Nut (zinc)	4
29	8863T14	Loop Clamp with Vinyl Coated 1/2" OD, 1-7/16" Long	2
30	1/4-20 x 1/2 HHCS-SS	1/4-20 x 1/2 Hex Head Cap Screw (stainless steel)	2
31	6006-CP	Cotter Pin, 5/32" x 1" (zinc)	1
32	ZZHEY3208	Cable Fitting	4
33	3530511	Magnetic Drum Handling Frame	1

EAGLE GRIP EMPTY DRUM HANDLING ATTACHMENT WIRING ASSEMBLY



EAGLE-GRIP® EMPTY DRUM HANDLING ATTACHMENT WIRING PARTS LIST

<u>ITEM</u>	<u>PART NO.</u>	<u>DESCRIPTION</u>	<u>QTY</u>
1	PA16529	Master Disconnect Switch	1
2	DC210-12	12 volt, 210 AH AGM Battery	2
3	7527K64	Terminal Block (Strip) 7/16", 4 circuits	2
4	RSD-200B-24	DC /DC Converter 1 Output 24V 8.4 A	1
5	T101772	24 Volt Battery Discharge Indicator (906T24JWDGN)	1
6	113765-67-67-4	BLACK Battery Cable 4" - 4ga with (2) 5/16" Ring Terminal Ends	1
7	113766-67-68-5	RED Battery Cable 5" - 4ga with (1) 5/16" & (1) 3/8 Terminal Ends	1
8	51064543	Battery Charger 115v/24v 30A (Magnetic Empty Drum Attachments ONLY)	1
9	51045638	USA AC Cable	1
10	A18033000UX0419	Green Indicator Light AC/DC 24V, 22mm Panel Mount	8
11	210954-94-06	In Line Fuse Holder with (1) #3/8 and (1) #10 ends	1
12	PA82693	Auto Fuse, ATC Type, Red, 10A	1
13	DEK06120	Left Elbow Boot 4-8 GA Black	2
14	DEK06121	Left Elbow Boot 4-8 GA Red	2
15	80094UZ-06-06-3	3" Signal Wire with (2) #10 ends	1
16	80094UZ-06-29-4	4" Signal Wire with (1) .250 & (1) #10 end	1
17	80094UZ-06-29-6	6" Signal Wire with (1) .250 & (1) #10 end	1
18	80094UZ-06-06-24	24" Signal Wire with (2) #10 ends	1
19	81055UZ-06-06-3	3" Signal Ground with (2) #10 ends	1
20	81055UZ-06-29-7	7" Signal Ground with (1) .250 and (1) #10 end	1
21	81055UZ-06-06-24	24" Signal Ground with (2) #10 ends	2
22	81055UZ-06x4	(3) 3" Signal Ground Wires with (4) #10 ends	1
23	81055UZ-06-84-16	16" Signal Ground with (1) .250 and (1) #5/16 end	1
24	80094UZ-06-84-20	20" Signal Wire with (1) #10 & (1) #5/16 ends	1
25	81401335	ELAY30x5 Magnet	4