

# ***Easy Lift Equipment Co., Inc.***

**2 Mill Park Court, Newark, Delaware 19713 - Phone: 800-233-1800 / 302-737-7000**

## **EASYLIFT COUNTERBALANCED DRUM TRANSPORTER WITH EG1 OR EG2L OPERATION & MAINTENANCE INSTRUCTIONS**



# **EASY LIFT EQUIPMENT COUNTER-BALANCED SERIES DRUM TRANSPORTERS**

## **INTRODUCTION**

The ergonomic series drum transporters utilize an automatic clamping mechanism for handling any size steel, plastic, or fiber chimed drum. These units vary in capacity from 100 to 800 pounds. The specification plate affixed to each unit provides the following information: model number, serial number, unit weight, and lifting capacity.

This manual contains information to instruct you on the proper use and maintenance of your Easy Lift Equipment unit. This manual should be available to all personnel working with the machine. Follow the maintenance procedures carefully to ensure a safe and reliable service life. Do not operate your equipment until you have read and understood these instructions.

## **COMISSIONING YOUR ERGONOMIC DRUM TRANSPORTER**

1. Remove all packing materials, protective strapping, and wood shipping blocks.
2. Perform a visual inspection of the entire unit for damage.

## **DAILY SAFETY INSPECTION**

1. Perform a visual inspection, checking for loose or damaged springs and jaws.
2. Ensure each operator has read the manual and is properly trained to operate the unit.
3. Observe the condition of the equipment for any other malfunction or defect.

**Do not operate your Ergonomic Drum Transporter if the unit does not pass any part of the inspection. Tag the unit properly to keep it out of service until the problem has been corrected. Immediately report this condition to your supervisor.**

## SAFETY PRACTICES

1. Do not lift loads that exceed the unit's rated capacity.
2. For transport, lift the drum just high enough so the drum has only the necessary floor clearance for travel. Do not transport or move a drum while the mast is raised to, or near, its maximum height.
3. Keep hands or feet away from the lifting area in front of the unit.
4. Keep hands or other objects clear of the lifting cylinder, clamping head, and moving mast during operation.
5. Ensure the lift cylinder rod is securely in place before lifting.
6. Never lay the unit down horizontally.

## WARNINGS

**WARNING:** Do not lift or suspend loads over people. Stay clear of suspended loads.

**WARNING:** Do not attempt to overload the drum transporter beyond its rated capacity, or raise the drum beyond its maximum lifting height.

**WARNING:** Never move the drum transporter when the drum is at its maximum lifting height.

**WARNING:** Keep hands and feet away from the pinch points, mast channels, and clamping head.

**WARNING:** Do not make alterations or modifications to the unit without authorization from Easy Lift Equipment.

**WARNING:** Do not leave unit outside in rain, snow, etc., for extended periods.

**WARNING:** Never press the release valve pedal too hard. It may cause the drum to lower too quickly and cause damage or injury.

**WARNING:** Never leave the unit without securing the unit with the step down floor lock. Failing to do so may allow the unit to roll by itself and cause property damage or personal injury.

**WARNING:** Never operate the unit on an incline or floor with a slope of more than 5°.

## **COUNTER-BALANCED DRUM TRANSPORTER OPERATING INSTRUCTIONS**

### **TO ADJUST CLAMPING HEAD FOR VARIOUS DRUM HEIGHTS:**

1. Remove the cotter & adjustment pin, and lower or raise the clamping mechanism so that the lower jaw is slightly below the chime of the drum. Then re-insert the adjustment & cotter pin into the desired location. It is recommended to have the cradle touching the lowest possible point of the drum that still permits engaging the drum. The second hole is positioned for use with standard 55-gallon drums.

### **TO ENGAGE AND TRANSPORT DRUMS:**

1. Center the clamping mechanism(s) with the center of the drum. Push the unit forward until the clamping mechanism contacts the drum.
2. Continue to push the foot pump to elevate the clamp allowing it to engage the clamping mechanism(s) with the chime of the drum. Maintain a small amount of forward pressure on the unit to keep the clamp tight against the drum to ensure the clamping head grips the drum chime securely. After the clamp is engaged continue pumping the foot cylinder until the drum is elevated enough to clear the floor for safe travel. The unit can now be pushed to transport the drum.
3. Press the smaller release pedal to lower the clamping mechanism and drum until the upper clamping jaw has retracted completely, disengaging the drum.

### **SCALE EQUIPPED MODELS (GRIP & WEIGH ATTACHMENTS)**

If your equipment has a scale system, the indicator has already been calibrated and tested before leaving the factory. It has been disconnected and packaged separately for safe travel. Unpack the indicator from the box and mount to the unit on the provided mounting bracket. Connect the indicator cable to the unit cable by screwing the male and female ends together. Turn on the indicator and ensure it reads zero before engaging a drum or roll. If handling liquids in a drum, it may take up to one minute for the indicator to settle on a specific weight. To speed up this process it is recommended to set the to a lower sensitivity. This can be achieved by programming the indicator to read in .5 pounds or .25 kilograms. If set to read in 1.0 or .5 kg. increments it will take less time for the indicator to settle on a specific weight. Please refer to the manual of the specific indicator for proper operation instructions.

## COUNTER-BALANCED WEIGHT CAPACITY CHART

CAPACITY	# OF WEIGHTS	MACHINE WEIGHT
800	30	1040
700	26	980
600	22	913
500	16	814
400	12	747
300	6	647
200	0	548
100	0	548

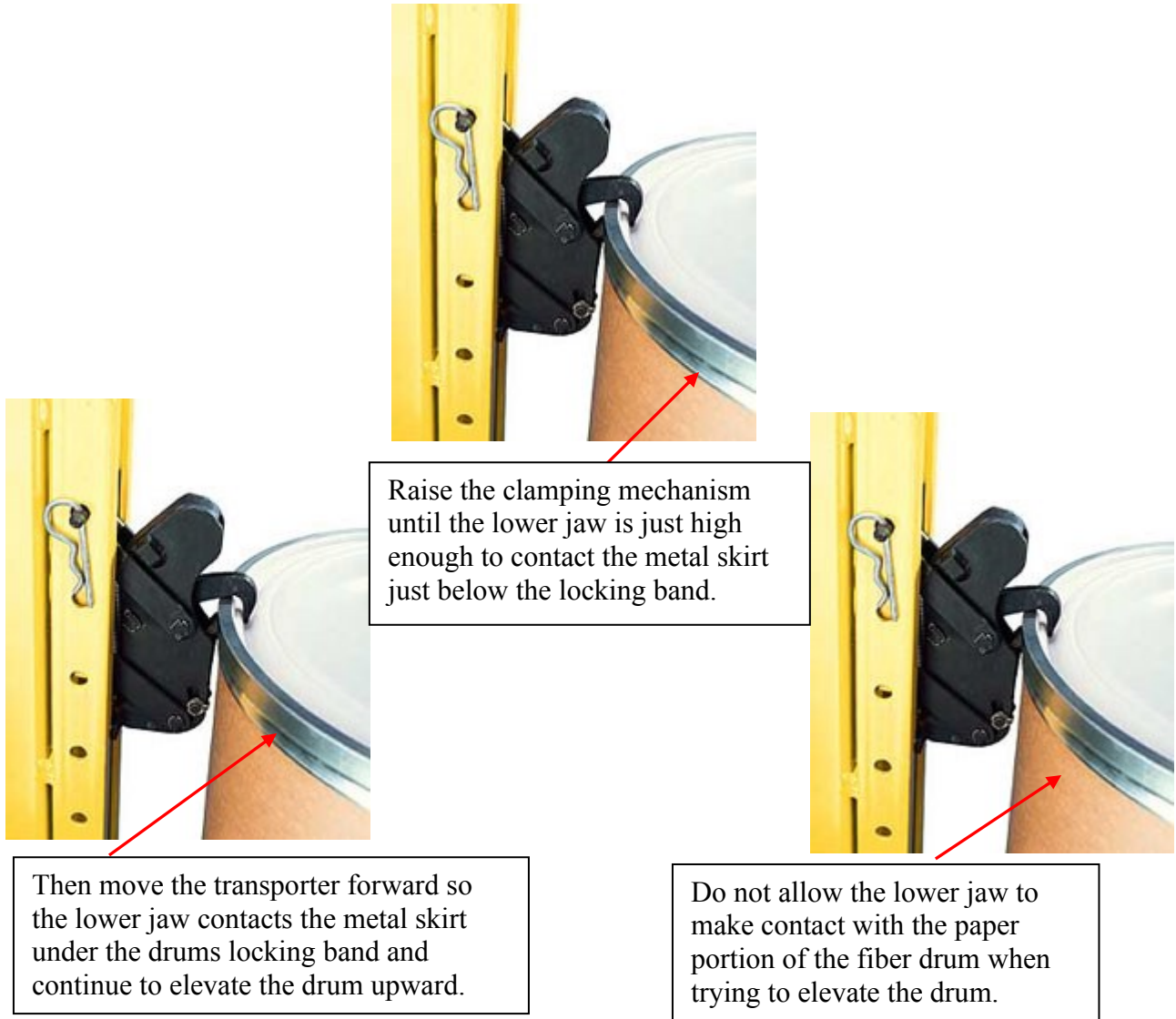
### Counter Balanced Drum Transporter™ Maintenance Checklist

			Maintenance Intervals			
			1 Mo	6 Mo	12 Mo	3 Yrs
Structural Steel:	1.1	Check for cracked welds on frame		X		
	1.2	Check to verify that specification data plates are affixed to the unit			X	
	1.3	Grease mast rollers and check roller condition			X	
Clamping Heads:	2.1	Inspect heads for loose or missing pins, cotter pins, springs, and replace as necessary	X			
	2.2	Lubricate clamping mechanisms	X			
	2.3	Replace all springs			X	
	2.4	Replace all pins, and links				X
Wheels:	3.1	Grease wheel swivel grease fittings			X	
	3.2	Check wheels for excessive wear and proper alignment			X	
Hydraulic Cylinder:	4.1	Check cylinder for leaks and proper operation	X			
Chain:	5.1	Verify proper chain tension and inspect chain for damage			X	
	5.2	Lubricate chain			X	

\*\*The maintenance intervals refer to normal service conditions. In case of aggravated conditions, the intervals must be reduced/increased as required.

# EasyLift Ergonomic Drum Transporter with EG1 Single Clamping Mechanism for use on Fiber Drums

## IMPORTANT NOTE FOR HANDLING FIBER DRUMS



### IMPORTANT:

It is important that the lower jaw does not contact the paper portion of the drum when raising the drum. Keep the lower jaw away from the paper portion of the drum until the lower jaw of the clamping mechanism is high enough to contact the metal skirt below the locking band. Then push the transporter forward to contact the skirt and continue to elevate the clamping mechanism. If the lower jaw contacts the paper portion of the drum when elevating the drum, the clamping mechanism will attempt to clamp the drum in this position and miss or tear the skirt. If this is done incorrectly, lower the clamp and try again. The clamping mechanism can also grip the drum without the lid and locking band.

# EASY LIFT EQUIPMENT FIBER DRUM CLAMPING PROCEDURE

## EG2L Clamp



### TO ENGAGE AND TRANSPORT FIBER DRUMS WITH AN EG2L CLAMP:

1. Ensure the fiber drum guards are in the forward position (closer to the clamp) and the cotter pins are locking the guards in place. The guards should always be in this position when handling fiber drums. The guards can be in the rearward position (closer to the mast) when handling steel or plastic drums.
2. Push the unit forward so the fiber drum guards are contacting the paper portion of the drum.
3. Elevate the clamping mechanism(s), allowing them to engage the locking band. After the clamp is engaged continue elevating the drum enough to ensure safe floor clearance. The unit can now be pushed to transport the drum.

**WARNING:** The fiber drum guards, when in the forward position, are designed to prevent the clamp from damaging the fragile paper portion of fiber drums. Great care should still be taken to ensure the clamping mechanism only contacts the metal skirt and locking band.

# Easy Lift Equipment Co., Inc.

2 Mill Park Court, Newark, Delaware 19713 - Phone: 800-233-1800 / 302-737-7000

## EASY LIFT EQUIPMENT WARRANTY POLICY FOR MODELS WITH PREFIXES: ED/ER/EL/ELDR/EG & RCR

**Easy Lift Equipment (“ELE”)** warrants each new product to be free from factory material and workmanship defects, under normal use with proper maintenance, for a period of 12 months. Warranty coverage for this warranty period is provided by authorized dealers and includes parts. Labor is covered for the same periods of 12 months as outlined above. Please call ELE for the authorized repair dealer in your area.

ELE shall be the sole judge of the validity of any claim or defect and may elect to make any replacement or repair of any part thereof that it has agreed to be defective. Wearable Items such as: hoses, bearings, belts, brushes, seals, lift motors, clamp motors, relays, fuses, springs and wheels are wear items not covered under the warranty policy. ELE assumes no responsibility whatsoever to work done, parts replaced, or expenses incurred not specifically authorized by ELE. Normal maintenance or replacement of service items is not covered by this warranty. No warranty claims will be considered for customers with any delinquent outstanding balance. When batteries, battery chargers, scale printers or scale indicators are purchased from ELE with the equipment, the original manufacturer’s warranty applies.

### **WARRANTY LIMITATION/DISCLAIMERS:**

Easy Lift Equipment reserves the right to void warranty coverage if the unit has been overloaded beyond rated capacity; damaged due to: abuse, misuse, neglect, accidents, freight damage, improper usage, improper repair, and/or improper storage; or any modification or repair conducted in a manner not approved by Easy Lift Equipment. Equipment used in freezers, abrasive, corrosive, and/or excessively moist conditions must be properly equipped for the environment to ensure the warranty is not voided. Warranty questions and claims should be directed to our customer service department. ELE customer service representatives will help you assess and resolve the claim or assist you in contacting the local authorized dealer or representative. The warranty described here shall constitute the sole remedy of the authorized dealer and/or the initial purchaser. ELE neither assumes nor authorizes any person to assume for it any other obligation or responsibility in connection with this product warranty. In no event shall ELE be responsible for direct, indirect, special or consequential damages or any other delay or any economic or commercial loss resulting from Easy Lift Equipment’s performance or non-performance under this warranty. This warranty is expressly in lieu of all warranties, obligations or responsibilities of ELE dealers or other authorized source, expressed, implied or statutory.

### **SUBMITTING CLAIMS:**

To make a claim under this policy, please contact Easy Lift Equipment for assistance. We can be reached by calling 800-233-1800 ext. 4 for customer service or by writing to [sales@easylifteqpt.com](mailto:sales@easylifteqpt.com). Do not return defective parts unless a return authorization (RA) has been provided requesting the return. If requested, we will provide shipping information on how the part should be returned and bear the expense for the return shipping, if the part is proven to be defective. A copy of the work order made at the time of the repair and parts claimed under warranty may be requested for ELE’s inspection.

### **ORDERING PARTS:**

Easy Lift Equipment’s parts are distributed through our customer service department and ship the same day as ordered whenever possible. You will be well taken care of whenever parts, adjustments or repairs are needed. **When contacting ELE, please be sure to state the model and serial number for the equipment.** There is no cost for electronic copies of replacement manuals, parts lists and other general information containing part numbers and nomenclature. Most manuals contain parts pricing, but it is not guaranteed to be valid as parts pricing can change at any time without notice. Any customer service representative can provide timely parts quotations upon request. Adherence to above procedure will save time and provide prompt assistance when it counts. You are of course always welcome to bring to us any questions, comments or recommendations pertaining to your Easy Lift Equipment products.

### **MANUFACTURER CONTACT INFORMATION:**

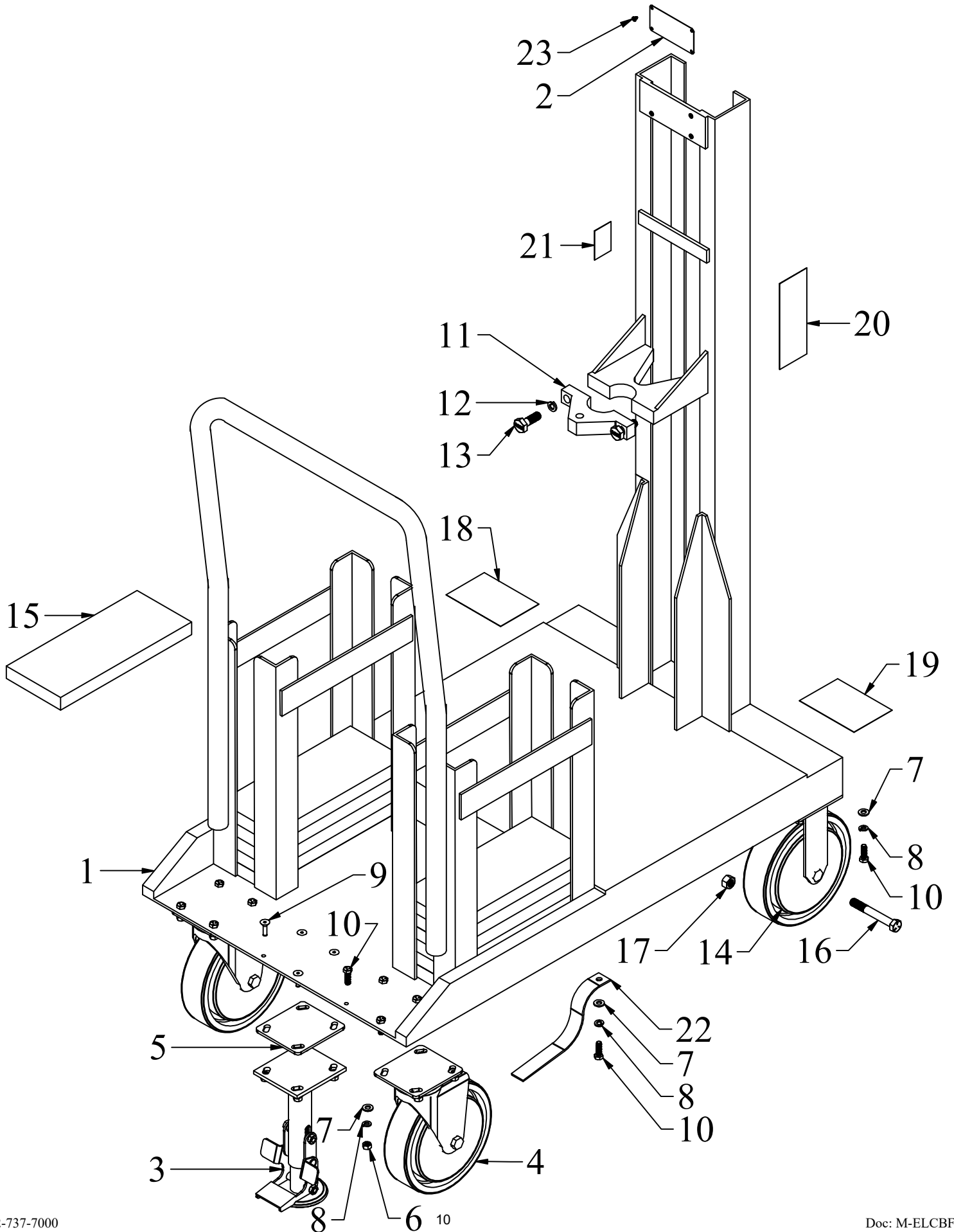
Easy Lift Equipment Co., Inc.  
2 Mill Park Ct.  
Newark, DE 19713  
Email: [sales@easylifteqpt.com](mailto:sales@easylifteqpt.com)

Phone: 800-233-1800: 302-737-7000  
Fax: 302-737-7333  
Website: [www.easylifteqpt.com](http://www.easylifteqpt.com)



THIS PAGE INTENTIONALLY LEFT BLANK

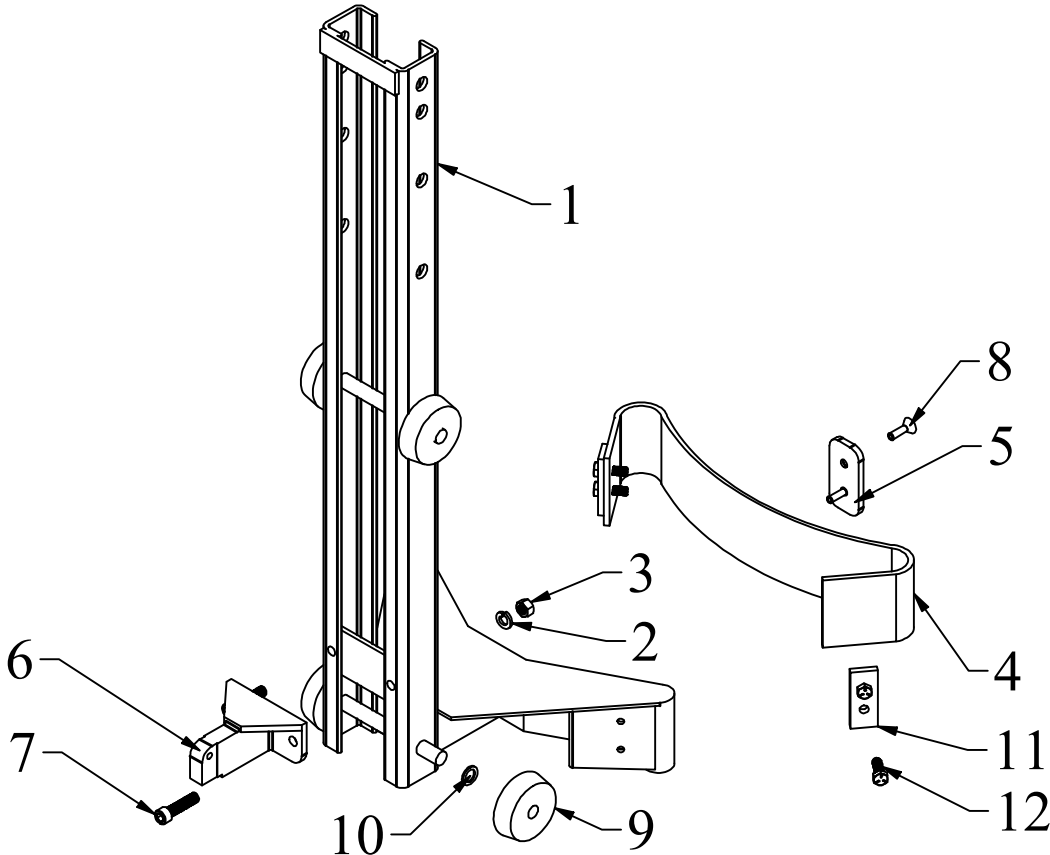
# EASYLIFT COUNTERBALANCE DRUM TRANSPORTER FRAME ASSEMBLY



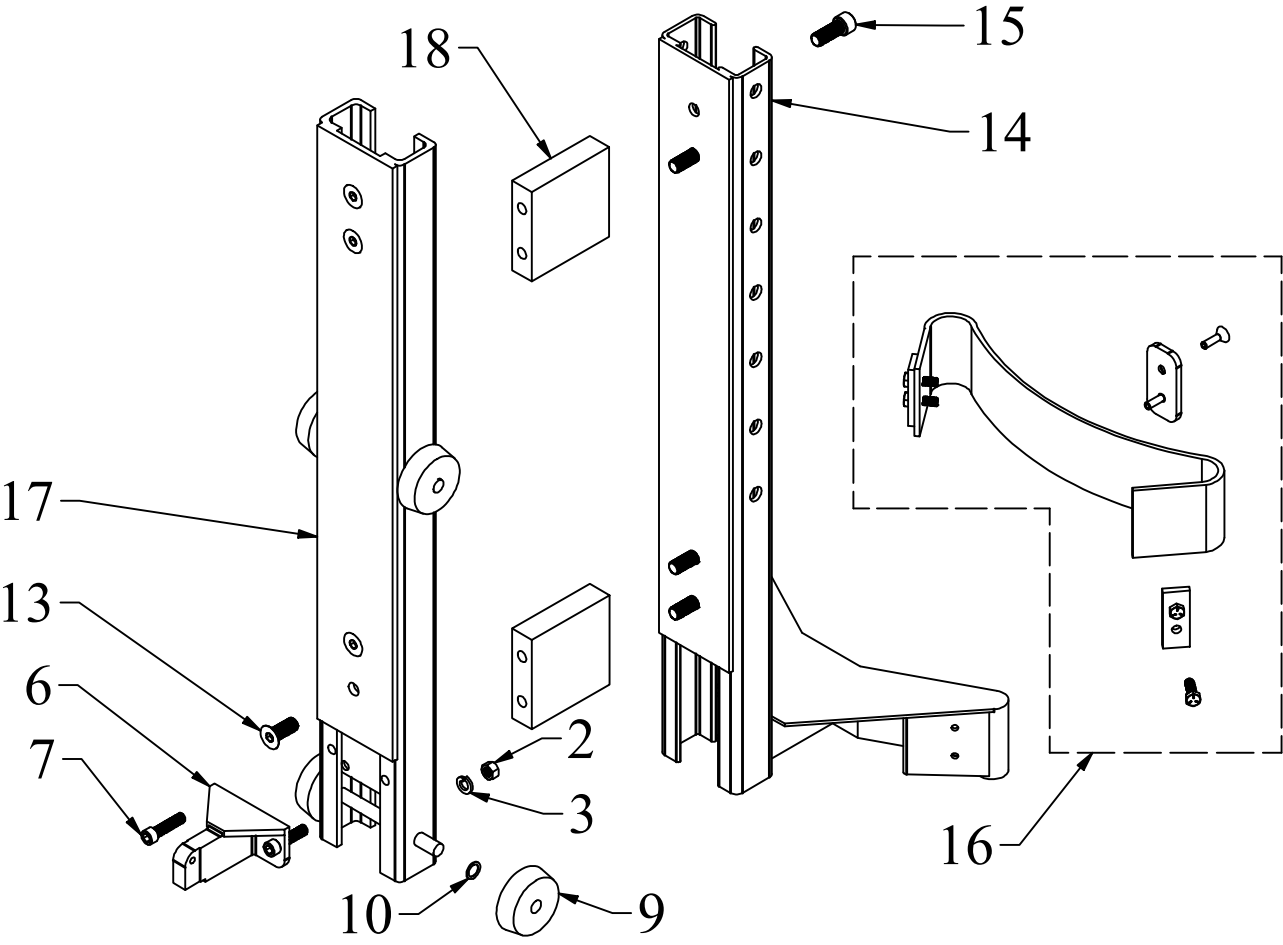
## EASYLIFT COUNTERBALANCE DRUM TRANSPORTER FRAME PARTS LIST

<u>ITEM</u>	<u>PART NO.</u>	<u>DESCRIPTION</u>	<u>QTY</u>
1	3530132	CB Frame (20" lift, foot pump)	1
1	3530133	CB Frame (40" lift, foot pump)	1
1	3530134	CB Frame (60" lift, foot pump)	1
1	3530135	CB Frame (20" lift, AC/DC powered)	1
1	3530136	CB Frame (40" lift, AC/DC powered)	1
1	3530137	CB Frame (60" lift, AC/DC powered)	1
2	MCL007031	Specification Plate	1
3	16LF0880	Step Down Floor Lock (for 8" wheels)	1
4	31-408-PSE	8" Swivel Caster with PSE Wheel	2
-	W-408-PSE	8" PSE Wheel Only	-
5	28Z17SP	1/4" Shim Plate (zinc plated)	1
6	5/16-18 HN	5/16-18 Finished Hex Nut (zinc)	12
6	5/16-18 HN-SS	5/16-18 Finished Hex Nut (stainless steel)	12
7	5/16 FW	5/16 Flat Washer (zinc)	21
7	5/16 FW-SS	5/16 Flat Washer (stainless steel)	21
8	5/16 LW	5/16 Lock Washer (zinc)	21
8	5/16 LW-SS	5/16 Lock Washer (stainless steel)	21
9	5/16-18 x 1 1/4 FSHCS-SS	5/16-18 x 1 1/4 Flat Socket Head Cap Screw (stainless steel)	4
10	5/16-18 x 1 HHCS	5/16-18 x 1 Hex Head Cap Screw Grade 5 (zinc)	17
10	5/16-18 X 1 HHCS-SS	5/16-18 x 1 Hex Head Cap Screw (stainless steel)	17
11	35091	Cylinder Clamp Bracket	1
12	1/2 LW	1/2 Lock Washer (zinc)	2
12	1/2 LW-SS	1/2 Lock Washer (stainless steel)	2
13	1/2-13 x 1 1/2 HHCS	1/2-13 x 1 1/2 Hex Head Cap Screw Grade 5 (zinc)	2
13	1/2-13 x 1 1/2 HHCS-SS	1/2-13 x 1 1/2 Hex Head Cap Screw (stainless steel)	2
14	31-408R-PSE	8" Rigid Caster with PSE Wheel	2
-	W-408-PSE	8" PSE Wheel Only	-
15	1" x 5" x 12" HRFB CW	1" x 5" x 12" HRFB CB Counter Weight	-
15	1" x 4" x 12" HRFB CW	1" x 4" x 12" HRFB DC CB Counter Weight	-
16	1/2-13 x 3 3/4 HHCS	1/2-13 x 3 3/4 Hex Head Cap Screw Grade 5 (zinc)	4
16	1/2-13 x 3 3/4 HHCS-SS	1/2-13 x 3 3/4 Hex Head Cap Screw (stainless steel)	4
17	1/2-13 HN	1/2-13 Finished Hex Nut (zinc)	4
17	1/2-13 HN-SS	1/2-13 Finished Hex Nut (stainless steel)	4
18	ADART002	Attention Read Operations Manual Decal	1
19	ADART600	600lbs/272kg Capacity Sticker	1
20	ADART016	ELE Address Decal (Vertical)	2
21	ADART009	Warning 5 Degree Decal for ELE & EL	1
22	S-207	Grounding Strap	1
23	6 x 1/4 RUDS-SS	6 x 1/4 Round Head U Drive Screw (stainless steel)	4

# INNER MAST ASSEMBLY



# INNER AND OUTER MAST ASSEMBLY



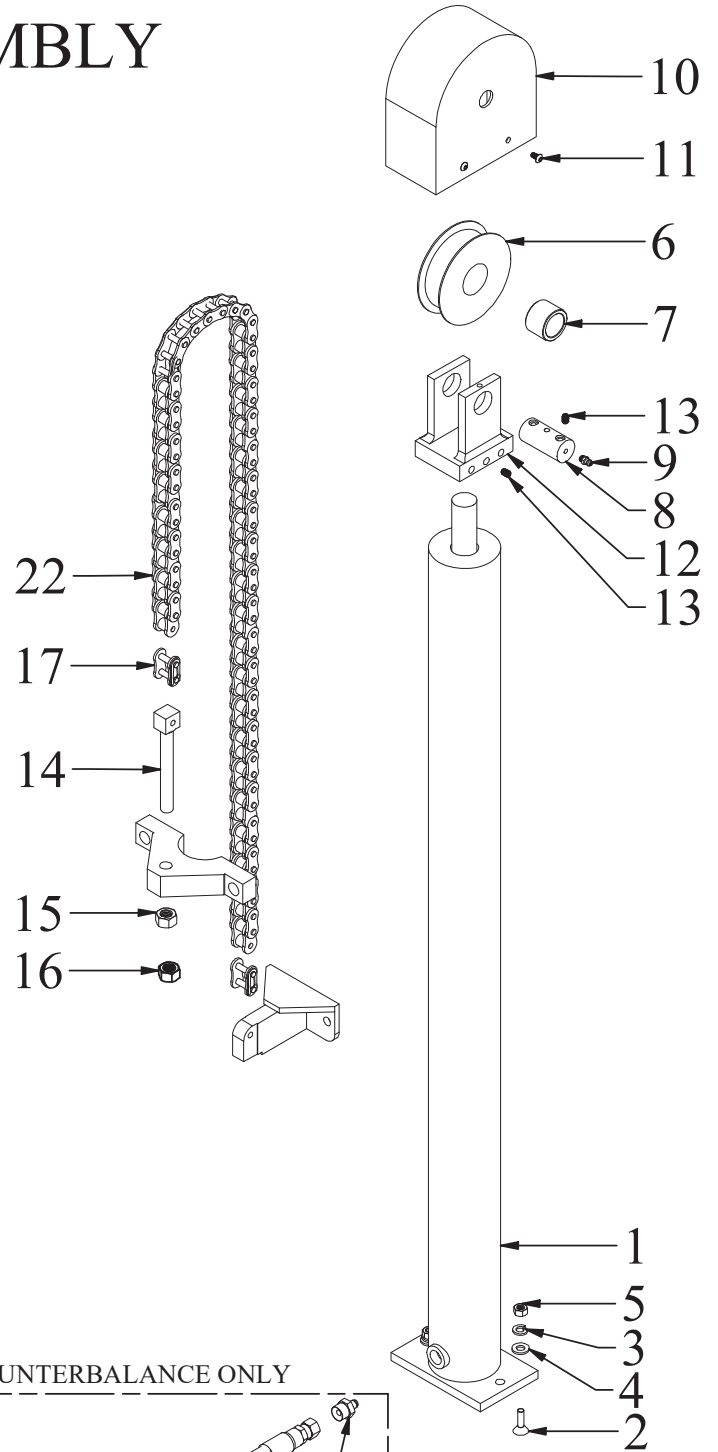
## INNER MAST PARTS LIST

<u>ITEM</u>	<u>PART NO.</u>	<u>DESCRIPTION</u>	<u>QTY</u>
1	3912	32" High Inner Mast with 5" Belt Cradle	1
2	3/8-16 HN	3/8-16 Finished Hex Nut (zinc)	2
2	3/8-16 HN-SS	3/8-16 Finished Hex Nut (stainless steel)	2
3	3/8 LW	3/8 Lock Washer (zinc)	2
3	3/8 LW-SS	3/8 Lock Washer (stainless steel)	2
4	3516	Rubber Belt	1
5	2580051	EG1/Ergo UHMW Belt Support	1
6	8912	Chain to Mast Bracket	1
6	8912HR	High Reach Chain to Mast Bracket	1
7	3/8-16 x 1 1/2 SHCS	3/8-16 x 1 1/2 Socket Head Cap Screw Alloy Plated	2
7	3/8-16 x 1 1/2 SHCS-SS	3/8-16 x 1 1/2 Socket Head Cap Screw (stainless steel)	2
8	5/16-18 x 1 FSHCS-SS	5/16-18 x 1 Flat Socket Head Cap Screw (stainless steel)	6
9	4008	Delrin Roller	4
10	90295A187	1/16" Nylon Flat Washer	-
10	95606A170	1/32" Nylon Flat Washer	-
11	2580050	EG1/Ergo Belts Clamp Straps	2
12	5/16-18 X 1 HHCS	5/16-18 x 1 Hex Head Cap Screw Grade 5 (zinc)	4
12	5/16-18 X 1 HHCS-SS	5/16-18 x 1 Hex Head Cap Screw (stainless steel)	4

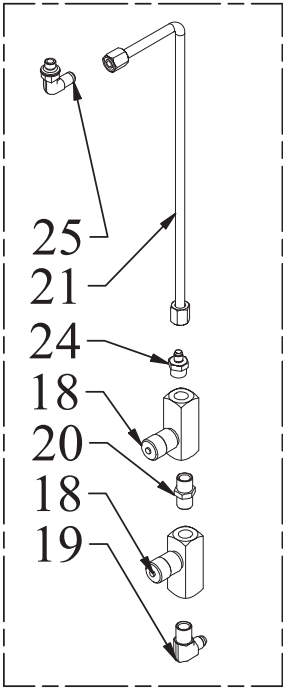
## INNER AND OUTER MAST PARTS LIST

<u>ITEM</u>	<u>PART NO.</u>	<u>DESCRIPTION</u>	<u>QTY</u>
2	3/8-16 HN	3/8-16 Finished Hex Nut (zinc)	2
2	3/8-16 HN-SS	3/8-16 Finished Hex Nut (stainless steel)	2
3	3/8 LW	3/8 Lock Washer (zinc)	2
3	3/8 LW-SS	3/8 Lock Washer (stainless steel)	2
6	8912	Chain to Mast Bracket	1
6	8912HR	High Reach Chain to Mast Bracket	1
7	3/8-16 x 1 1/2 SHCS	3/8-16 x 1 1/2 Socket Head Cap Screw Alloy Plated	2
7	3/8-16 x 1 1/2 SHCS-SS	3/8-16 x 1 1/2 Socket Head Cap Screw (stainless steel)	2
9	4008	Delrin Roller	4
10	90295A187	1/16" Nylon Flat Washer	-
10	95606A170	1/32" Nylon Flat Washer	-
13	1/2-20 x 1 1/4 FSHCS	1/2-20 x 1 1/4 Flat Socket Head Cap Screw (zinc)	4
14	2580453	32" High Outer Mast with 3" Belt Cradle	1
15	1/2-20 x 1 1/4 SHCS	1/2-20 x 1 1/4 Socket Head Cap Screw Alloy Plated	4
16	5516E	Optional: Belt Cradle Kit (includes all hardware)	1
17	2580401	32" High Inner Mast (Scale)	1
18	LCRB	Load Cell Replacement Block	2
18	HM1000	Load Cell with 4' cable	2

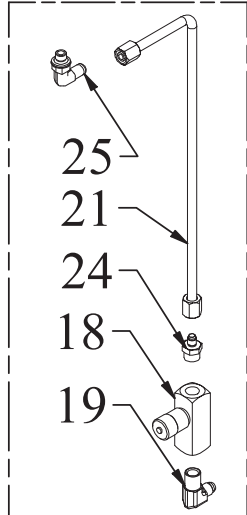
# DRUM TRANSPORTER LIFT CHAIN ASSEMBLY



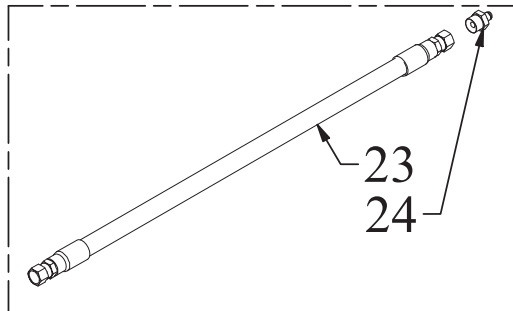
## EMPTY DRUM STACKER ONLY



## DC POWERED ONLY



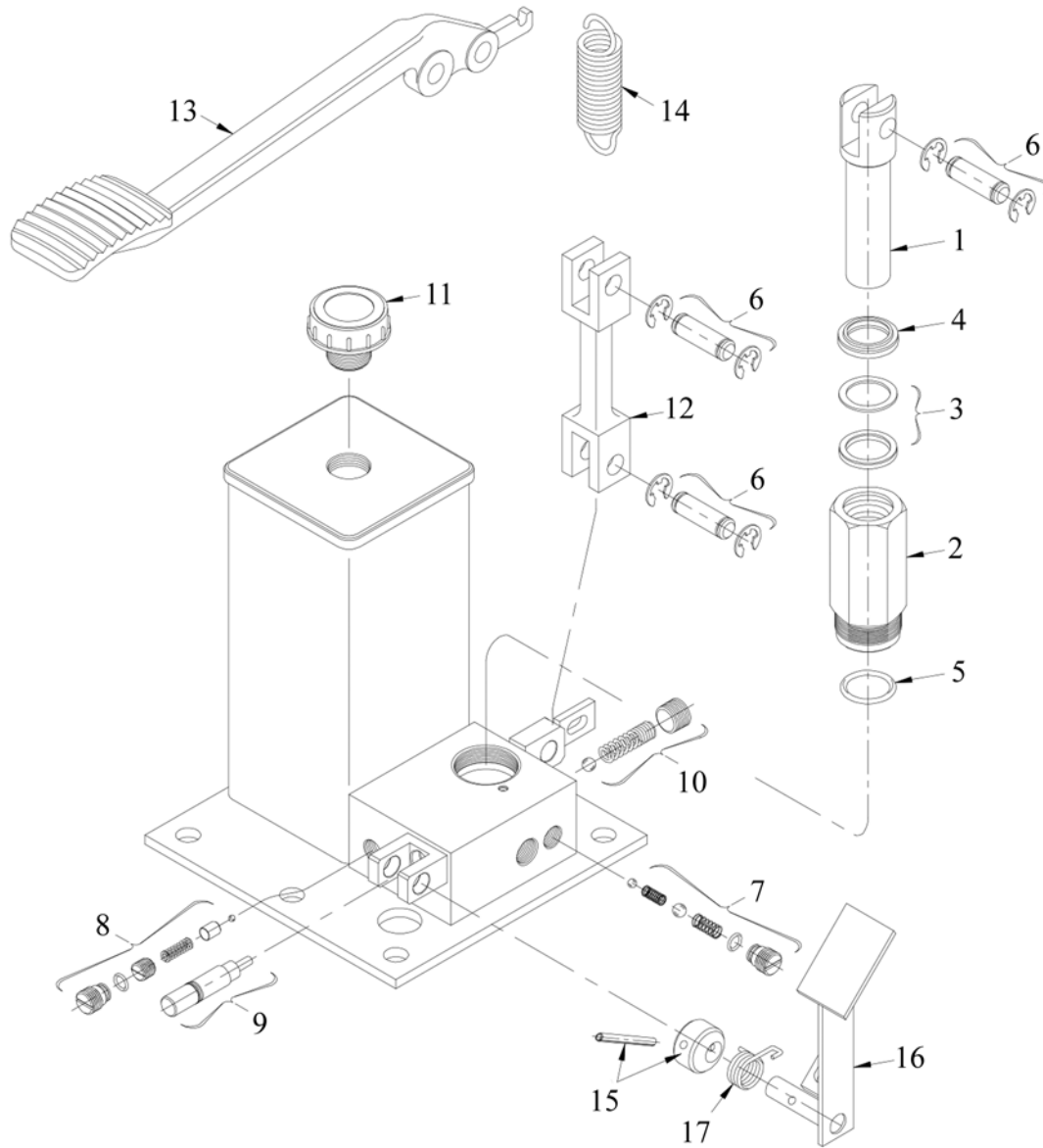
## COUNTERBALANCE ONLY



## DRUM TRANSPORTER LIFT CHAIN PARTS LIST

<u>ITEM</u>	<u>PART NO.</u>	<u>DESCRIPTION</u>	<u>QTY</u>
1	EL1.5-1.0-24BZ	Hydraulic Lift Cylinder	1
1	EL1.5-1.0-28BZ	Hydraulic Lift Cylinder	1
1	EL1.5-1.0-32BZ	Hydraulic Lift Cylinder	1
1	EL1.5-1.0-36BZ	Hydraulic Lift Cylinder	1
1	EL1.5-1.0-40BZ	Hydraulic Lift Cylinder	1
-	EL1.5PISTONKIT	Seal Kit (new piston, seals & wire)	-
2	5/16-18 x 1 1/4 FSHCS-SS	5/16-18 x 1 1/4 Flat Socket Head Cap Screw (stainless steel)	2
3	5/16 LW	5/16 Lock Washer (zinc)	2
3	5/16 LW-SS	5/16 Lock Washer (stainless steel)	2
4	5/16 FW	5/16 Flat Washer (zinc)	2
4	5/16 FW-SS	5/16 Flat Washer (stainless steel)	2
5	5/16-18 HN	5/16-18 Finished Hex Nut (zinc)	2
5	5/16-18 HN-SS	5/16-18 Finished Hex Nut (stainless steel)	2
6	55061	4" Sheave Wheel	1
7	CB-1622-08	Sheave Wheel Bushing	1
8	45061	Sheave Wheel Axle (1" x 2.125")	1
9	1095K41	1/4"-28 Grease Fitting	1
10	3022	4" Sheave Wheel Cover	1
11	10-24 x 3/8 BSC-SS	10-24 x 3/8 Button Socket Cap 18/8 (stainless steel)	4
12	7912-4-1	Sheave Wheel Bracket 4" (1" bore)	1
13	93445A425	1/4"-20 x 3/8" Stainless Steel Knurl-Grip Set Screw	2
14	2022	Chain Adjuster for ANSI 60 Chain	1
15	1/2-13 HN	1/2-13 Finished Hex Nut (zinc)	1
15	1/2-13 HN-SS	1/2-13 Finished Hex Nut (stainless steel)	1
16	1/2-13 NLN	1/2-13 Nylon Locking Nut (zinc)	1
16	1/2-13 NLN-SS	1/2-13 Nylon Locking Nut (Stainless Steel)	1
17	60HMCL	ANSI 60 Link	2
18	F600B	Flow Control 3/8" NPT	1
19	PA80806	90 Male Elbow 3/8T 3/8PT	1
20	PA80702	Hex Nipple	1
21	813-1245-55-55-18.5	18" Steel Line with nuts and sleeves	1
22	RC060RC1-49	Chain-Ansi 60 (49" Long)	1
22	RC060RC1-49PC	FDA Chain-Ansi 60 (49" Long)	1
22	RC060RC1-65	Chain-Ansi 60 for Ergo (65" Long)	1
22	RC060RC1-65PC	FDA Chain-Ansi 60 for Ergo (65" Long)	1
22	RC060RC1-73	Chain-Ansi 60 for Ergo (73" Long)	1
22	RC060RC1-73PC	FDA Chain-Ansi 60 for Ergo (73" Long)	1
23	PAC9803-27-27-20	3/8" Hydraulic Hose Assembly w/ (2) PA93227 Ends, 20" Long	1
24	PA80769	Male Connector	1
25	6C4OMXS	HPI 90 Deg Fitting (Post 2013)	1

# FP3AC-80 SINGLE PISTON CAM RELEASE FOOT PUMP ASSEMBLY

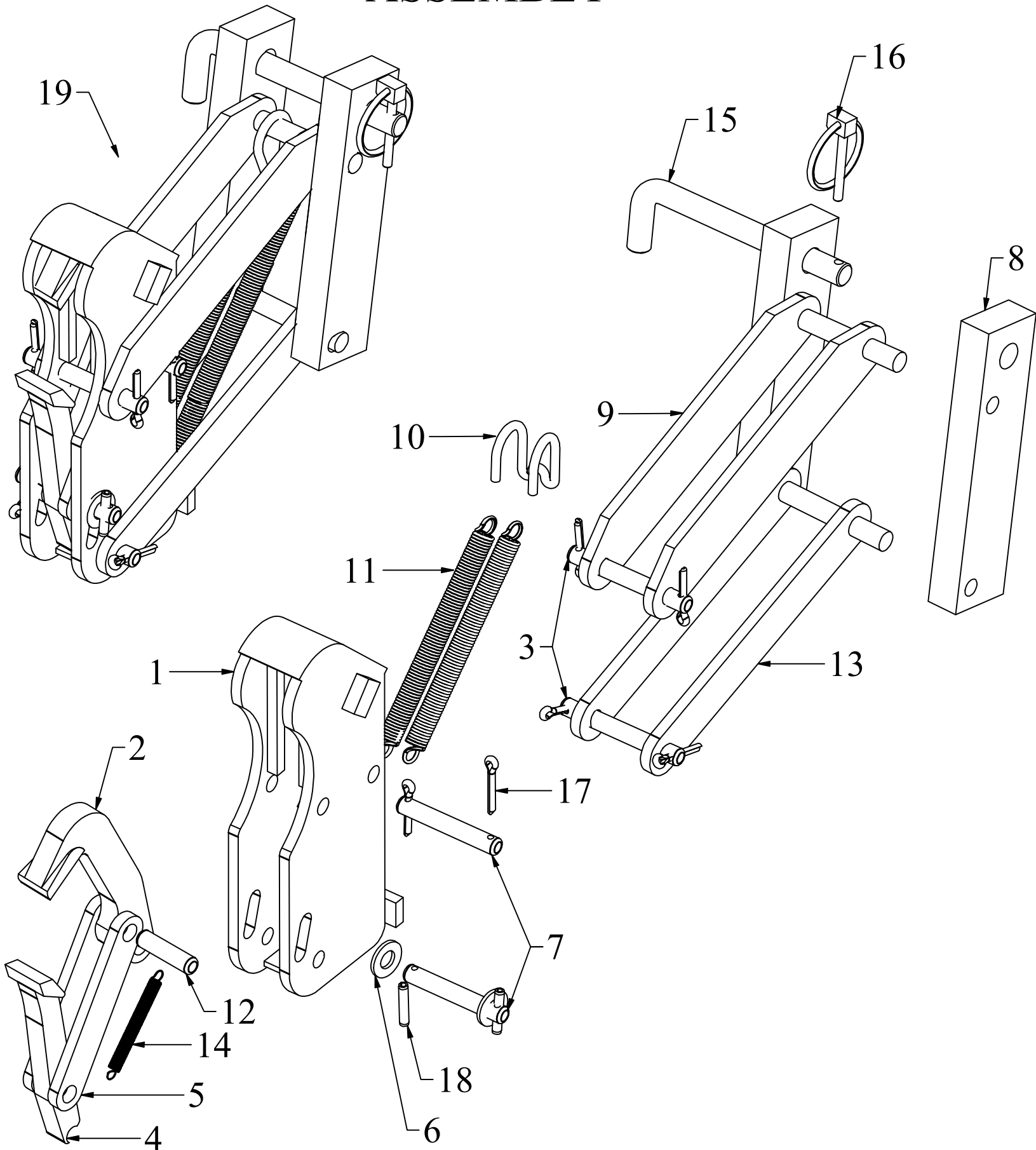




## FP3AC-80 SINGLE PISTON CAM RELEASE FOOT PUMP PARTS LIST

<u>ITEM</u>	<u>PART NO.</u>	<u>DESCRIPTION</u>	<u>QTY</u>
	FP3AC80	Foot Pump Assembly	1
1	P3-2	Pump Piston	1
2	P3-3	Piston Barrel	1
3	P3-4RP	Pump Piston Packing	1
4	P3-6	Packing Wiper	1
5	P1-20	Pump Barrel Seal	1
6	CP13-10RP	Piston Pin / Link Pin (Including Rings)	3
7	P1-12RP	Pump Valve (Complete)	2
8	P3-13RP	Overload Valve	1
9	CP13-17RP	Release Plunger	1
10	PAC18-RP	Release Valve	1
11	P1-16	Breather Screw	1
12	CP13-12	Pump Link	1
13	FCP12-9	Foot Lever	1
14	FCP13-23	Foot Lever Return Spring	1
15	FCP13-13RP	Release Lever Pin and Cam	1
16	FCP13-14	Foot Release Lever	1
17	FP1AC-95	Release Spring	1
	<b><u>REPAIR KIT</u></b>		
	P3AC-RK	FP3AC-80 Foot Pump Repair Kit	1

# EG1 LIGHT DUTY SINGLE CLAMPING MECHANISM ASSEMBLY



## EG1 LIGHT DUTY SINGLE CLAMPING MECHANISM PARTS LIST

<u>ITEM</u>	<u>PART NO.</u>	<u>DESCRIPTION</u>	<u>QTY</u>
1	6302	Housing (Black Powder Coating)	1
1	6302SS	Housing (Stainless Steel)	1
2	9107SS	Stainless Steel Upper Jaw (Spark Resistant)	1
3	15104-1SS	3/8" x 2.242" Pin, Fibre Guard, Housing to Clevis (stainless steel)	2
4	7107SS	Stainless Steel Lower Jaw (Spark Resistant)	1
5	13009-1	Link, Jaw to Jaw (zinc)	2
5	13009-1SS	Link, Jaw to Jaw (stainless steel)	2
6	1470-6	Custom Washer EG (Stainless Steel)	2
7	16104-1SS	3/8" x 1.770" Pin, Upper Jaw Link (stainless steel)	2
8	8002	Adjustment Slide (FDA Black Powder Coating)	2
8	8002SS	Adjustment Slide (Stainless Steel)	2
9	5912	Upper Clevis 8" (FDA Black Powder Coating)	1
9	5912SS	Upper Clevis 8" (Stainless Steel)	1
9	5912S	Upper Clevis 6" (FDA Black Powder Coating - Double Mast)	1
9	5912SS-S	Upper Clevis 6" (Stainless Steel - Double Mast)	1
10	8996-2	Clevis Spring Hook (Stainless Steel)	1
11	8206	Clevis Spring (zinc)	2
12	41041SS	3/8" x 1" Pin, Upper Jaw to Link, short (stainless steel)	1
13	6912	Lower Clevis 7 1/2" (FDA Black Powder Coating)	1
13	6912SS	Lower Clevis 7 1/2" (Stainless Steel)	1
13	6912S	Lower Clevis 5 1/2" (FDA Black Powder Coating - Double Mast)	1
13	6912SS-S	Lower Clevis 5 1/2" (Stainless Steel - Double Mast)	1
14	1206	Spring, Jaw to Housing (stainless steel)	1
15	10204-1SS	1/2" x 4-1/2" Adjusting Pin (stainless steel)	1
16	HANG-1	3/16 x 1-1/4 Shank Lynch Pin "Hang 1" (9016)	1
17	3006-CP	Cotter Pin, 1/8" x 3/4" (zinc)	6
17	1/8 x 3/4 CP-SS	1/8 x 3/4 Cotter Pins (stainless steel)	6
18	5/32 x 1/2 Roll Pin	Stainless Steel 5/32 x 1/2 Roll Pin	2
	WLG	12oz White Lithium Grease	1
<b><u>FULL ASSEMBLIES</u></b>			
19	9004	EG1 Single Clamping Mechanism (FDA Black Powder Coating)	
19	9004S	EG1 Single Clamping Mechanism (FDA Black Powder Coating - Double Mast)	
19	9004SRC	EG1 Single Clamping Mechanism (Stainless Steel Housing - Non-Sparking)	
19	9004SRC-S	EG1 Single Clamping Mechanism (Stainless Steel Housing - Non-Sparking - Double Mast)	
19	9004SS	EG1 Single Clamping Mechanism (Stainless Steel - Non-Sparking)	
19	9004SS-S	EG1 Single Clamping Mechanism (Stainless Steel - Non-Sparking - Double Mast)	
<b><u>PREVENTATIVE MAINTENANCE KITS</u></b>			
	EG1PMKIT	EG1 Preventative Maintenance Kit	
	EG1BCPMKIT	EG1 Preventative Maintenance Kit w/ Belt Cradle	

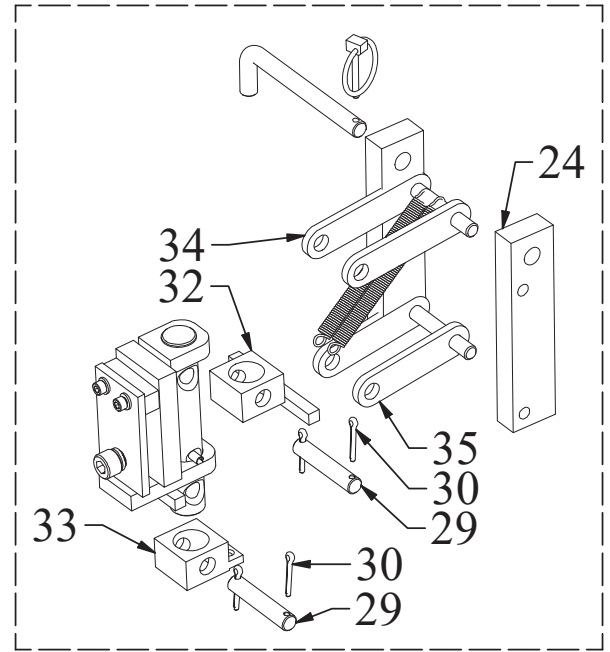
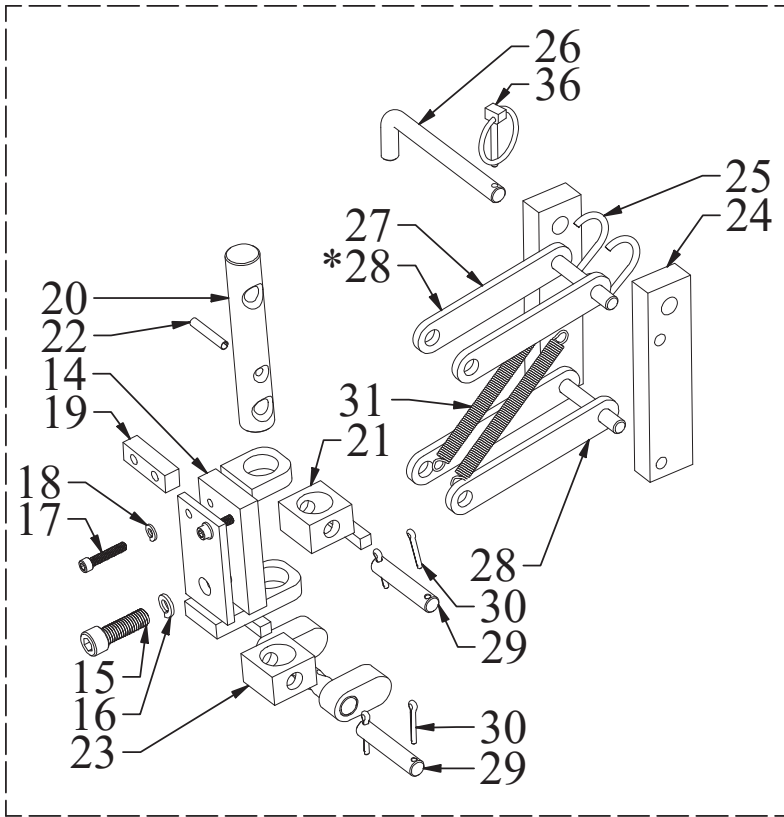
**EG1 SINGLE CLAMPING MECHANISM  
PREVENTATIVE MAINTENANCE KIT BREAKDOWN**

<b>EG1 PREVENTATIVE MAINTENANCE KIT</b>			
<b><u>ITEM</u></b>	<b><u>PART NO.</u></b>	<b><u>DESCRIPTION</u></b>	<b><u>QTY</u></b>
11	8206	Clevis Spring (zinc)	2
14	1206	Spring, Jaw to Housing (stainless steel)	1
16	HANG-1	3/16 x 1-1/4 Shank Lynch Pin "Hang 1" (9016)	1
17	3006-CP	Cotter Pin, 1/8" x 3/4" (zinc)	6
18	5/32 x 1/2 Roll Pin	Stainless Steel 5/32 x 1/2 Roll Pin	2
	WLG	12oz White Lithium Grease	1
<b>ALL ABOVE ITEMS PART NUMBER: EG1PMKIT</b>			

<b>EG1 PREVENTATIVE MAINTENANCE WITH BELT CRADLE KIT</b>			
	<b><u>PART NO.</u></b>	<b><u>DESCRIPTION</u></b>	<b><u>QTY</u></b>
11	8206	Clevis Spring (zinc)	2
13	5516E	Optional: Belt Cradle Kit (includes all hardware)	1
14	1206	Spring, Jaw to Housing (stainless steel)	1
16	HANG-1	3/16 x 1-1/4 Shank Lynch Pin "Hang 1" (9016)	1
17	3006-CP	Cotter Pin, 1/8" x 3/4" (zinc)	6
18	5/32 x 1/2 Roll Pin	Stainless Steel 5/32 x 1/2 Roll Pin	2
	WLG	12oz White Lithium Grease	1
<b>ALL ABOVE ITEMS PART NUMBER: EG1BCPMKIT</b>			

**THIS PAGE INTENTIONALLY LEFT BLANK**

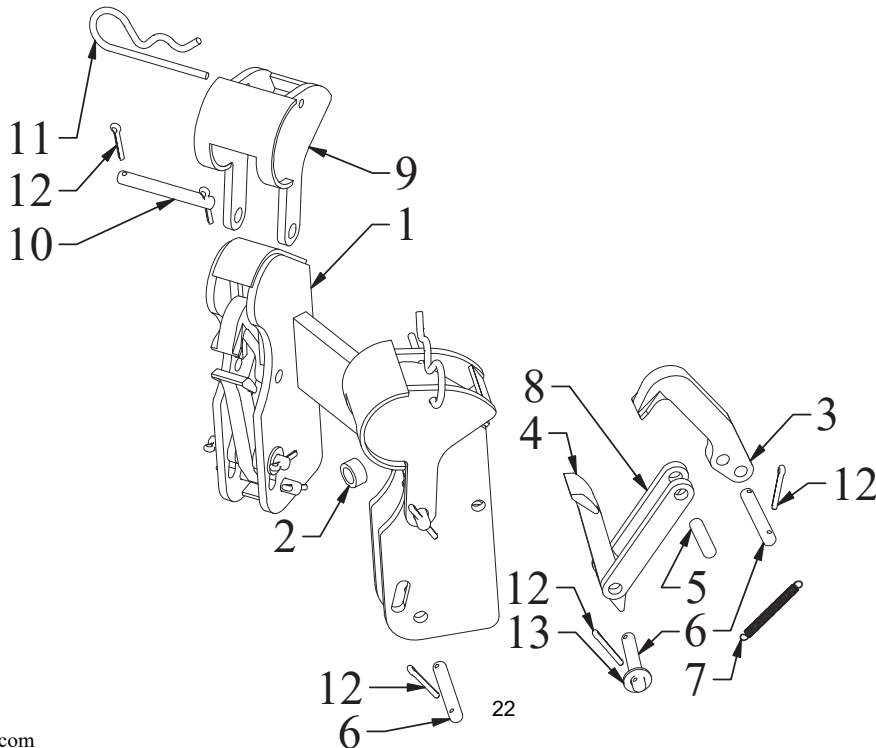
# EG2 LIGHT DUTY DOUBLE CLAMPING MECHANISM ASSEMBLY



SEEN ON LEFT: **ERGO UNITS WITH A 5" BELT CRADLE** WILL PRIMARILY USE A 6" UPPER CLEVIS (#27) AND A 5-1/2" LOWER CLEVIS (#28). ALONG WITH A LOWER PIVOT BLOCK WITH OVAL STOP BARS (#23) AND AN UPPER PIVOT BLOCK WITH A 2-1/4" STOP BAR (#21).

**\*EAGLE-GRIP ATTACHMENTS** WILL PRIMARILY USE 5-1/2" LOWER CLEVISES (#28) FOR BOTH THE TOP AND BOTTOM CLEVISES.

SEEN ON THE RIGHT: **ERGO UNITS WITH A 3" BELT CRADLE** WILL PRIMARILY USE A 4-1/2" UPPER CLEVIS (#34) AND A 4" LOWER CLEVIS (#35). ALONG WITH A LOWER PIVOT BLOCK (#33) AND AN UPPER PIVOT BLOCK WITH A 3-3/4" STOP BAR (#32).



## EG2 LIGHT DUTY DOUBLE CLAMPING MECHANISM PARTS LIST

<u>ITEM</u>	<u>PART NO.</u>	<u>DESCRIPTION</u>	<u>QTY</u>
1	7302R	Housing, Double Clamping Mechanism (Black Powder Coating)	1
1	7302RSS	Housing, Double Clamping Mechanism (Stainless Steel)	1
2	10001	Bushing, Housing Yolk Trunion (zinc)	1
3	9107SS	Stainless Steel Upper Jaw (Spark Resistant)	2
4	7107SS	Stainless Steel Lower Jaw (Spark Resistant)	2
5	41041SS	3/8" x 1" Pin, Upper Jaw to Link, short (stainless steel)	2
6	16104-1SS	3/8" x 1.770" Pin, Upper Jaw Link (stainless steel)	6
7	1206	Spring, Jaw to Housing (stainless steel)	2
8	13009-1	Link, Jaw to Jaw (zinc)	4
9	621	Fiber Drum Guard (Black Powder Coating)	2
9	621SS	Fiber Drum Guard (Stainless Steel)	2
10	15104-1SS	3/8" x 2.242" Pin, Fibre Guard, Housing to Clevis (stainless steel)	2
11	7019	3-7/8" Hair Pin Clip (zinc)	2
12	3006-CP	Cotter Pin, 1/8" x 3/4" (zinc)	16
13	1470-6	Custom Washer EG (Stainless Steel)	4
14	6012R	Universal Body (Black Powder Coating)	1
15	1/2-13 x 1 1/2 SHCS	1/2-13 x 1 1/2 Socket Head Cap Screw (zinc)	1
16	1/2 LW	1/2 Lock Washer (zinc)	1
17	1/4-20 x 1 1/4 SHCS	1/4-20 x 1 1/4 Socket Head Cap Screw Alloy Plated	2
18	1/4 LW	1/4 Lock Washer (zinc)	2
19	50064	Spacer (Black Powder Coating)	1
20	64061	Universal Pin (zinc)	1
21	50021R	Upper Pivot Block (Black Powder Coating)	1
22	70062	Spring Roll Pins 1/4 X1-1/2 (zinc) (xref 70641)	1
23	5012R	Lower Pivot Block with Oval Stop Bars (Black Powder Coating)	1
24	8002	Adjustment Slide (FDA Black Powder Coating)	2
25	8996-2	Clevis Spring Hook (Stainless Steel)	1
26	10204-1SS	1/2" x 4-1/2" Adjusting Pin (stainless steel)	1
27	5912R	Upper Clevis 6" (Black Powder Coating)	1
27	5912RZ	Upper Clevis 6" (FDA Powder Coating)	1
28	6912R	Lower Clevis 5 1/2" (Black Powder Coating)	1
28	6912RZ	Lower Clevis 5 1/2" (FDA Powder Coating)	1
29	16033-1	1/2" x 2.625" Pin, Clevis (zinc)	2
30	6006-CP	Cotter Pin, 5/32" x 1" (zinc)	4
31	8206	Clevis Spring (zinc)	2
32	50021RS	Upper Pivot Block (Black Powder Coating - Double Mast)	1
33	5012RS	Lower Pivot Block (Black Powder Coat- Double Mast)	1
34	5912RS	Upper Clevis 4 7/16" (Black Powder Coating - Double Mast)	1
34	5912RZS	Upper Clevis 4 7/16" (FDA Powder Coating - Double Mast)	1
35	6912RS	Lower Clevis 4" (Black Powder Coating - Double Mast)	1
35	6912RZS	Lower Clevis 4" (FDA Powder Coating - Double Mast)	1
36	HANG-1	3/16 x 1-1/4 Shank Lynch Pin "Hang 1" (9016)	1
 <b><u>FULL ASSEMBLIES</u></b>			
	4004R	EG2L Double Clamping Mechanism (Black Powder Coating)	
	4004RS	EG2L Double Clamping Mechanism (Black Powder Coating - Double Mast)	
	4004RSRC	EG2L Double Clamping Mechanism (Stainless Steel Housing - Non-Sparking)	
	4004RSRC-S	EG2L Double Clamping Mechanism (Stainless Steel Housing - Non-Sparking- Double Mast)	
 <b><u>PREVENTATIVE MAINTENANCE KITS</u></b>			
	EG2LPMKIT	EG2LDCM Preventative Maintenance Kit	

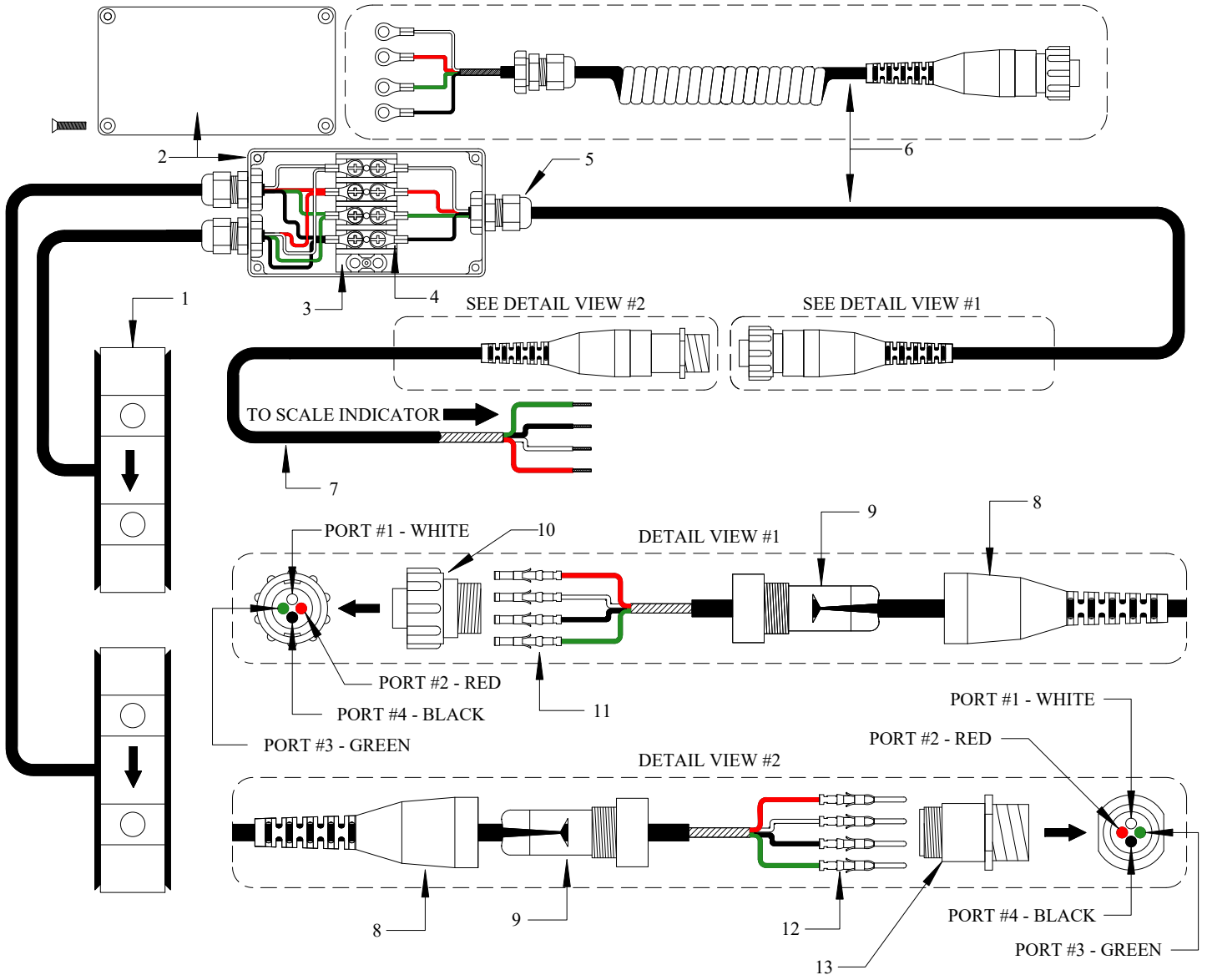
**EG2 LIGHT DUTY DOUBLE CLAMPING MECHANISM  
PREVENTIVE MAINTENANCE KIT PARTS LIST**

<b><u>PART NO.</u></b>	<b><u>DESCRIPTION</u></b>	<b><u>QTY</u></b>
1206	Spring, Jaw to Housing (stainless steel)	2
HANG-1	3/16 x 1-1/4 Shank Lynch Pin "Hang 1" (9016)	1
7019	3-7/8" Hair Pin Clip (zinc)	2
3006-CP	Cotter Pin, 1/8" x 3/4" (zinc)	16
8206	Clevis Spring (zinc)	2
5516E	Optional: Belt Cradle Kit (includes all hardware)	1
WLG	12oz White Lithium Grease	1



**THIS PAGE INTENTIONALLY LEFT BLANK**

# SCALE WIRING ASSEMBLY



## SCALE WIRING PARTS LIST

<u>ITEM</u>	<u>PART NO.</u>	<u>DESCRIPTION</u>	<u>QTY</u>
1	HM1000	Load Cell with 4' cable	2
2	CU-124	Terminal Box Enclosure	1
-	7531A34	Two Sided Tape (6" Length)	1
3	7527K64	Terminal Block (Strip) 7/16", 4 circuits	1
4	3A214	Terminal Eyelet	12
5	ZZHEY3208	Cable Fitting	3
6	3530360	Eagle-Grip Scale Cable Assembly (Female End) - 30" Length	1
6	3530351	Scale Cable Assembly (Female End) - 50" Length (48" Mast)	1
6	3530352	Scale Cable Assembly (Female End) - 54" Length (60" Mast)	1
6	3530353	Scale Cable Assembly (Female End) - 60" Length (72" Mast)	1
6	3530354	Scale Cable Assembly (Female End) - 70" Length (84" Mast)	1
6	3530355	Scale Cable Assembly (Female End) - 80" Length (96" Mast)	1
6	3530356	Scale Cable Assembly (Female End) - 90" Length (108" Mast)	1
6	3530357	Scale Cable Assembly (Female End) - 100" Length (120" Mast)	1
6	3530368	Scale Cable Assembly (Female End) - 110" Length (132" Mast)	1
6	3530369	Scale Cable Assembly (Female End) - 120" Length (144" Mast)	1
6	3530358	Scale Coiled Cable Assembly (Female End)	1
7	3530361	Eagle-Grip/Ergo Scale Cable Assembly (Male End) - 24" Length	1
7	3530350	DH/RH, ED/ER, ELDR Scale Cable Assembly (Male End) - 36" Length	1
7	3530379	DH/RH, ED/ER, ELDR Swivel Scale Cable Assembly (Male End) - 48" Length	1
8	AP2074891	Strain Relief	2
9	AP2074901	Cable Grip	2
10	AP2060601	Connector Plug Size 11-4 (Female)	1
11	AP661054	Terminal Socket	4
12	AP661034	Terminal Pin	4
13	AP2061531	Connector Recp CPC 11-4 (Male)	1

### Non-Intrinsically Safe Indicators

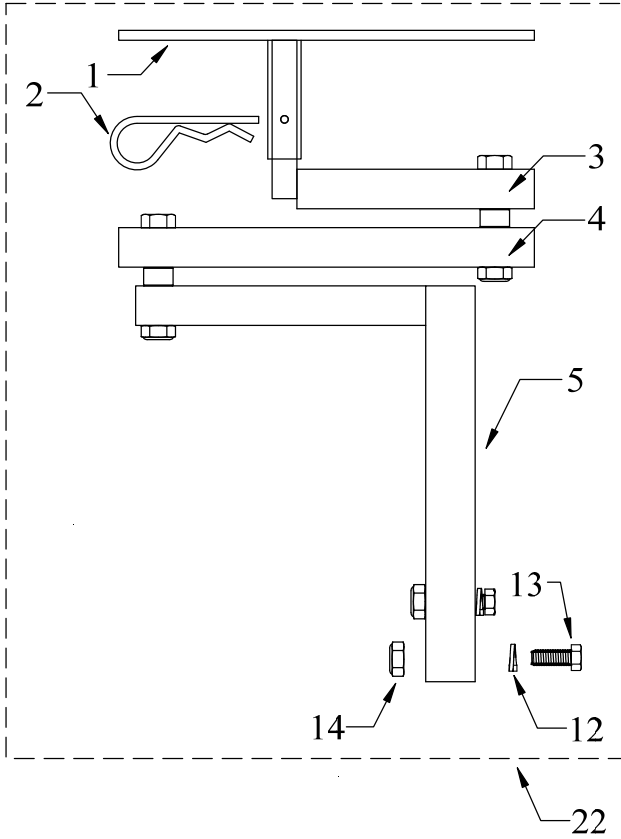
7000XLM	Doran™ 7000XL Non-intrinsically Safe Scale Indicator
SUB0853	Rechargeable Battery, with wire and terminals (2200, 7000, 8000)
2200	Doran™ 2200 Non-intrinsically Safe Scale Indicator (Numeric Keypad)
EXOPT187	Battery Option for Non-Intrinsically Safe 2200 Indicator
164582	Rice Lake 482 Indicator w Internal Battery & Charger
164585	Rice Lake 482 Plus Indicator w Internal Battery & Charger
107708	Rice Lake 720i Indicator

### Intrinsically Safe Indicators

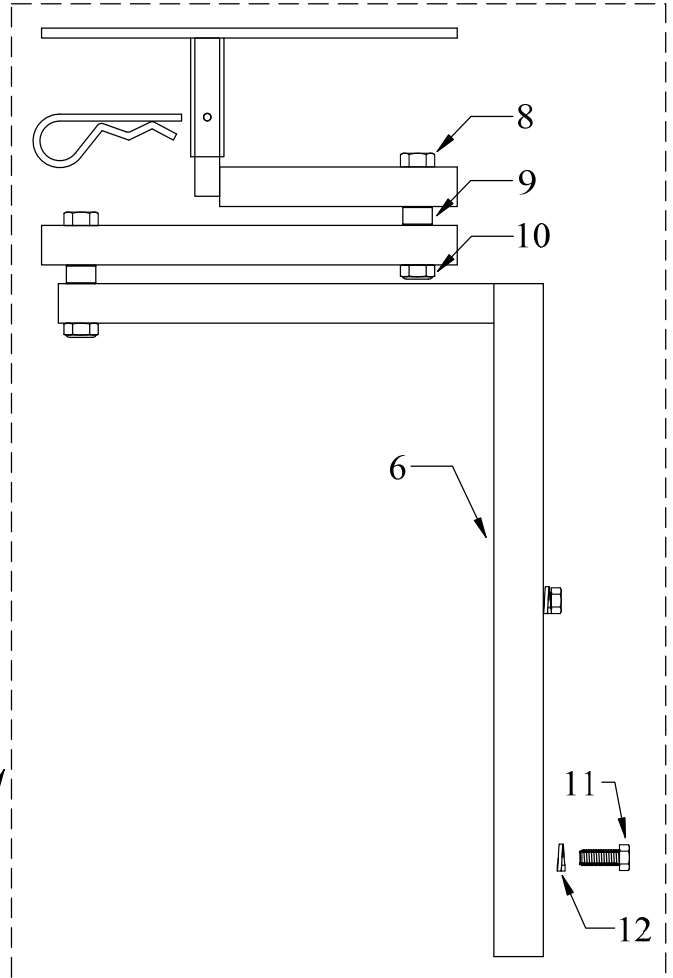
185288	Rice Lake 882IS Indicator w Battery Pack & Safe Area Charger
185291	Rice Lake 882IS PLUS Indicator w Battery Pack & Safe Area Charger
180831	Rice Lake 882IS Battery
194191	Rice Lake 882IS Battery Charger (IS6V2, 100-240 VAC)
72210052	Mettler Toledo IND226x Indicator
72258718	Mettler Toledo IND560x Indicator
64060627	Mettler Toledo EX Indicator Battery (Includes Cable)
64060217	Mettler Toledo Battery Charger (Safe Area, US Plug)

# SWIVEL SCALE BRACKET ASSEMBLY

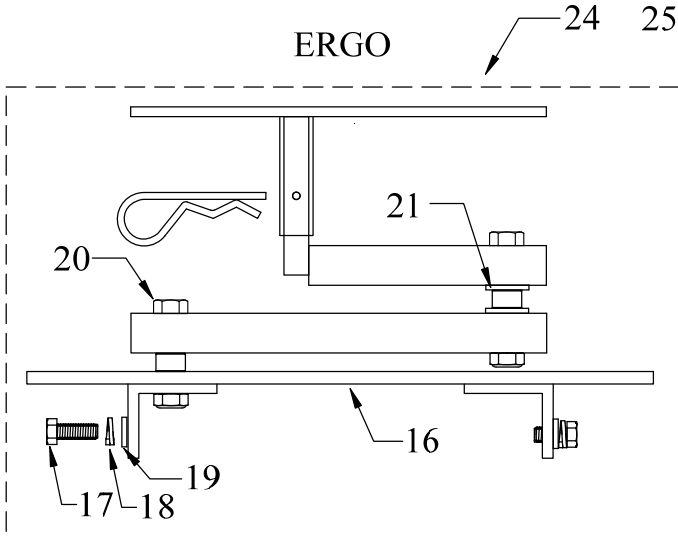
ELDR



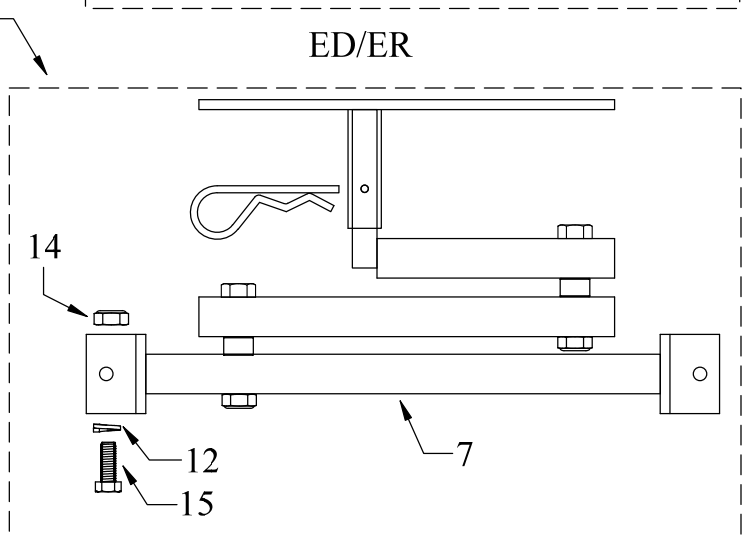
DRUM/ROLL-HAULER



ERGO



ED/ER



## SWIVEL SCALE BRACKET PARTS LIST

<u>ITEM</u>	<u>PART NO.</u>	<u>DESCRIPTION</u>	<u>QTY</u>
1	3530348	Indicator Mount Bracket With Tube	1
2	98335A094	Zinc-plated steel cotter pin, 7/8"-1 D, 3-3/4 L	1
3	2580309	Scale Swing Bracket Post Bracket	1
4	2580308	Scale Swing Bracket Mid Bracket	1
5	2580310	ELDR Swivel Scale Bracket Frame Mount	1
6	3530349	DH Swivel Scale Bracket Base Mount	1
7	2580307	ED Swivel Scale Bracket Frame Mount	1
8	1/2-13 x 3 HHCS	1/2-13 x 3 Hex Head Cap Screw Grade 5 (zinc)	2
9	10001	Bushing, Housing Yolk Trunion (zinc)	2
10	1/2-13 THIN NLN	1/2-13 Nylon Locking Nut (THIN)	2
11	5/16-18 x 3/4 HHCS	5/16-18 x 3/4 Hex Head Cap Screw Grade 5 (zinc)	2
12	5/16 LW	5/16 Lock Washer (zinc)	2
13	5/16-18 x 1 HHCS	5/16-18 x 1 Hex Head Cap Screw Grade 5 (zinc)	2
14	5/16-18 HN	5/16-18 Finished Hex Nut (zinc)	2
15	5/16-18 x 1 3/4 HHCS	5/16-18 x 1 3/4 Hex Head Cap Screw (zinc)	2
16	2580306	Ergo Scale Mount - 1.5" High	1
16	3530396	Ergo Scale Mount - 6.5" High	1
17	1/4-20 x 3/4 HHCS	1/4-20 x 3/4 Hex Head Cap Screw Grade 5 (zinc)	2
18	1/4 LW	1/4 Lock Washer (zinc)	2
19	1/4 FW SAE	1/4 Flat Washer SAE (zinc)	2
20	1/2-13 x 2 1/2 HHCS	1/2-13 x 2 1/2 Hex Head Cap Screw Grade 5 (zinc)	1
21	1/2 FW	1/2 Flat Washer (zinc)	2
 <b><u>FULL ASSEMBLY</u></b>			
22	3530402	ELDR Scale Swing Out Bracket Assembly	1
23	3530403	DH / RH Scale Swing Out Bracket Assembly	1
24	3530404	Ergo Scale Swing Out Bracket 1.5" Assembly	1
24	3530405	Ergo Scale Swing Out Bracket 6.5" Assembly	1
25	3530406	ED / ER Scale Swing Out Bracket Assembly	1