

Easy Lift Equipment Co., Inc.

2 Mill Park Court, Newark, Delaware 19713 - Phone: 800-233-1800 / 302-737-7000

EASYLIFT ERGONOMIC DRUM TRANSPORTER WITH EG1 OR EG2L OPERATION & MAINTENANCE INSTRUCTIONS



EASY LIFT EQUIPMENT ERGONOMIC DRUM TRANSPORTER MANUAL

INTRODUCTION

EasyLift ergonomic drum transporters utilize an automatic clamping mechanism for handling steel, plastic, or fiber chimed drums. These models vary in capacity from 400 lbs. to 1,500 lbs. The specification plate affixed to each unit provides the following information: model number, serial number, unit weight, and lifting capacity.

This manual contains information to help instruct operators on the proper use and maintenance of your EasyLift ergonomic drum transporter. This manual should be made available to all operators that will use this equipment. Following the maintenance procedures carefully will ensure a safe and reliable service life. Do not operate this equipment until you have read and understand these instructions.

COMMISSIONING YOUR ERGONOMIC DRUM TRANSPORTER

1. Perform a visual inspection for potential damage, including checking for hydraulic oil leaks.
2. Remove all packing materials, protective strapping, and wood shipping blocks, then remove the machine from the shipping pallet or crate.
3. Check that the ergonomic step-down floor lock is working properly by depressing the small portion of the step-down pedal to release the foot lock. To engage the floor lock, depress the large portion of the step-down pedal, which will engage contact with the floor and secure the equipment in place. Check that the caster wheels are free of obstruction and functioning properly.
4. Verify that lift and lower functions are in proper working order by pumping the larger foot pedal down and up. Test the lowering function by pressing softly on the small lowering pedal. The lowering pedal is pressure sensitive allowing the operator to control the speed of descent. Pressing down too hard on the lowering pedal can cause the clamping mechanism to lower rapidly.

DAILY SAFETY INSPECTION

1. Perform a visual inspection, checking for any evident damage to the machine or any hydraulic oil leakage from previous use. Check all hydraulic fittings, components and connections and look under the machine itself for leaks.
2. Ensure that the step-down floor lock is functioning properly and that the wheels are free of obstructions.
3. Perform a visual inspection, checking for loose or damaged springs and jaws in the clamping mechanism.
4. Verify that lift and lower functions are in proper working by pumping the larger foot pedal down and up. Test the lowering function by pressing softly on the small lowering pedal.

Do not operate your EasyLift Drum Transporter if you notice any unsafe condition(s) that may have been caused by an accident or malfunction from previous use. Immediately report any unsafe conditions or issues with the equipment to your supervisor. Tag the machine properly to keep others from using it until the issue has been corrected.

SAFETY PRACTICES

1. Do not lift loads that exceed the machines' rated capacity.
2. Only lift the drum to the minimum height needed for proper floor clearance before transporting the drum to its destination. Do not transport or move a drum at heights greater than 6" (15cm) above floor level.
3. Always keep hands, feet and other objects clear of the mast channel, lifting and rotation chains, clamping mechanism, lift cylinder and any other moving parts. Also keep hand and feet clear of the lifting area in front of the unit.
4. Do not use the machine on inclined floors having a slope of more than 5 degrees.
5. Never lay the equipment down horizontally.

WARNINGS

WARNING: Never lift or suspend loads over people. Stay clear of suspended loads.

WARNING: Do not attempt to operate the equipment beyond its rated capacity.

WARNING: Never move the machine when the load is at its maximum lifting height. Lower the mast so the drum has only the necessary floor clearance.

WARNING: Keep hands and feet away from pinch points, such as mast channel, lifting & rotation chains, clamping mechanism, lift cylinder and any other moving parts.

WARNING: Do not make alterations or modifications to the machine without authorization from Easy Lift Equipment.

WARNING: Do not leave the machine outside in inclement weather for extended periods.

WARNING: Never press the small lowering pedal too hard. The pedal is pressure sensitive allowing the drum to be lowered at a safe, controlled speed. Pressing the lowering pedal too hard will cause the drum to lower rapidly causing possible damage or injury.

WARNING: Never leave the machine unattended without applying the step-down floor lock. Leaving the machine unsecured may allow it to move inadvertently and cause property damage or personal injury.

WARNING: Never operate the machine on an inclined floor with a slope of more than 5 degrees.

EASYLIFT ERGONOMIC DRUM TRANSPORTER OPERATING INSTRUCTIONS

TO ENGAGE, PICK AND TRANSPORT DRUMS:

1. Press down on the small lowering pedal of the lift cylinder so the clamp is below the drum's chime. If the clamp does not lower below the drum's chime, refer to the instructions below for adjusting the height of the clamping mechanism. Once the clamp mechanism is appropriately lowered, approach the center of the drum and push the equipment forward until the clamping mechanism contacts the drum. Keep the clamping mechanism pressed tightly against the side of the drum and pump the larger foot pedal down and up until the lower clamping jaw engages with the chime of the drum.
2. Continue to pump the larger foot pedal allowing the pedal to travel all the way up and pressing completely down to achieve the full stroke. The weight of the drum on the lower clamping jaw will activate the mechanism causing the upper jaw to clamp down on the chime, securing the drum. After the clamp is securely engaged continue pumping the foot pedal until the drum is elevated slightly above floor level for safe travel.
3. Only lift the drum to the minimum height needed for proper floor clearance while transporting the drum to its destination. Do not transport or move a drum at heights greater than 6" (15cm) above floor level.

TO RELEASE DRUMS:

1. Once you have arrived at the required destination, press softly on the smaller lowering pedal. The lowering pedal is pressure sensitive allowing the operator to control the speed of descent. Pressing down too hard on the lowering pedal can cause the drum to lower rapidly, potentially causing property damage or personal injury. Continue to apply pressure to the lowering pedal until the drum contacts the floor causing the upper clamping jaw to retract completely and allowing the drum to disengage from the clamp.

ADJUSTING THE CLAMPING MECHANISM FOR VARIOUS HEIGHT DRUMS:

MODELS WITH THE INNER MAST ONLY:

1. Standard models require the operator to pump the lift pedal to fully elevate the clamping mechanism without a load. There are additional positions available on the mast to decrease or increase the height of the clamping mechanism to handle various height drums. The lowest position available with the inner mast design will enable the drum transporter to clamp drums as short as 26" (66cm) in overall height.
2. Remove the circle cotter pin as well as a stainless-steel adjusting pin while holding the clamping mechanism with your other hand. Lower the clamping mechanism to the desired available position so that the lower clamping jaw is slightly below the chime of the drum with the drum at floor level. Then re-insert the adjusting pin & cotter pin to secure the clamping mechanism into place. Once secure, lower the inner mast by fully depressing on smaller lowering pedal.

MODELS WITH THE INNER AND OUTER MAST:

1. Remove the circle cotter pin & stainless-steel adjusting pin while holding the clamping mechanism with your other hand. Lower or raise the clamping mechanism to the desired available position so that the lower clamping jaw is slightly below the chime of the drum with the drum at floor level. Re-insert the adjustment pin & circle cotter pin to secure the clamping mechanism into place. The lowest position available with the outer mast design will enable the drum transporter to clamp drums as short as 17” (43.1cm) in overall height.

MODELS EQUIPPED WITH SCALE SYSTEMS

If your equipment has a scale system, the indicator has already been factory calibrated and tested. The indicator has been disconnected and packaged separately for safe travel. Unpack the indicator from the box and attach to the mounting bracket. Once securely mounted, connect the corresponding male and female indicator cables. Non-Intrinsically safe scale indicators have internal batteries.

Intrinsically safe indicators have external batteries which need to be mounted and have a separate battery cable that needs to be securely connected to the back of the indicator. All scale indicators are provided with a separate set of instructions that are packaged along with the indicator. Please read the scale indicator operations manual for more specific instructions of use.

Turn the indicator “ON” and ensure it reads zero before engaging a drum. Follow the instructions listed above for engaging a drum. If handling drums containing liquids operators should allow the contents of the drum to settle prior to documenting drum weights. This will help ensure the most accurate possible measurements. Most scale indicators are set to display the weight in increments of 0.1 lb. or 0.05 kg. To speed up the process it is recommended to set the indicator to a lower sensitivity. This can be achieved by programming the indicator to read in .5 pounds or .25 kilograms or 1.0 or .5 kg. increments, this will take less time for the indicator to settle on a specific weight.

MAINTENANCE INSTRUCTIONS

1. Before every usage, check that all springs, pins, casters, lift chains and its anchors are in good working order and that the hydraulic cylinder works properly and isn’t leaking.
2. On a monthly basis, spray light grade oil on moving parts in the clamping mechanism to ensure smooth operation. It is recommended to keep the clamping mechanism lubricated and free from foreign materials which may impede proper operation of jaws and springs. The Darcor™ casters equipped on this equipment have precision sealed ball bearings and require no lubrication.
3. For heavy usage, it is recommended to replace all springs, hydraulic oil and sealing components of the hydraulic cylinder once each year.

EASYLIFT ERGONOMIC DRUM TRANSPORTER MAINTENANCE CHECKLIST

			Maintenance Intervals			
			1 Mo	6 Mo	12 Mo	3 Years
Structural Steel:	1.1	Check for cracked welds on frame;		X		
	1.2	Check to verify that specification data plates are affixed to the unit;			X	
	1.3	Grease* mast, rollers and check roller condition.			X	
Clamping Head(s):	2.1	Inspect heads for loose or missing pins, cotter pins, springs, and replace as necessary;	X			
	2.2	Lubricate** clamping mechanisms;	X			
	2.3	Replace all springs;			X	
	2.4	Replace all pins, and links.				X
Wheels:	3.1	Grease* wheel swivel grease fittings;			X	
	3.2	Check wheels for excessive wear and proper alignment.			X	
Hydraulic Cylinder:	4.1	Check cylinder for leaks and proper operation.	X			
Chain:	5.1	Verify proper chain tension and inspect chain for damage.			X	
	5.2	Lubricate*** chain.			X	

The maintenance intervals refer to normal service conditions.

In high volume usage conditions, the intervals must be increased as required.

* For Non-FDA equipment: NAPA Premium Performance Multi-Purpose Wheel Bearing Grease.

* For FDA (gray color) equipment: Super Lube Synthetic Food Grade Grease with Syncolon PTFE.

** For both Non-FDA & FDA Equipment: WD-40, Berkebile White Lithium Grease or comparable.

*** For both Non-FDA & FDA ANSI 60 Chain: SAE 40

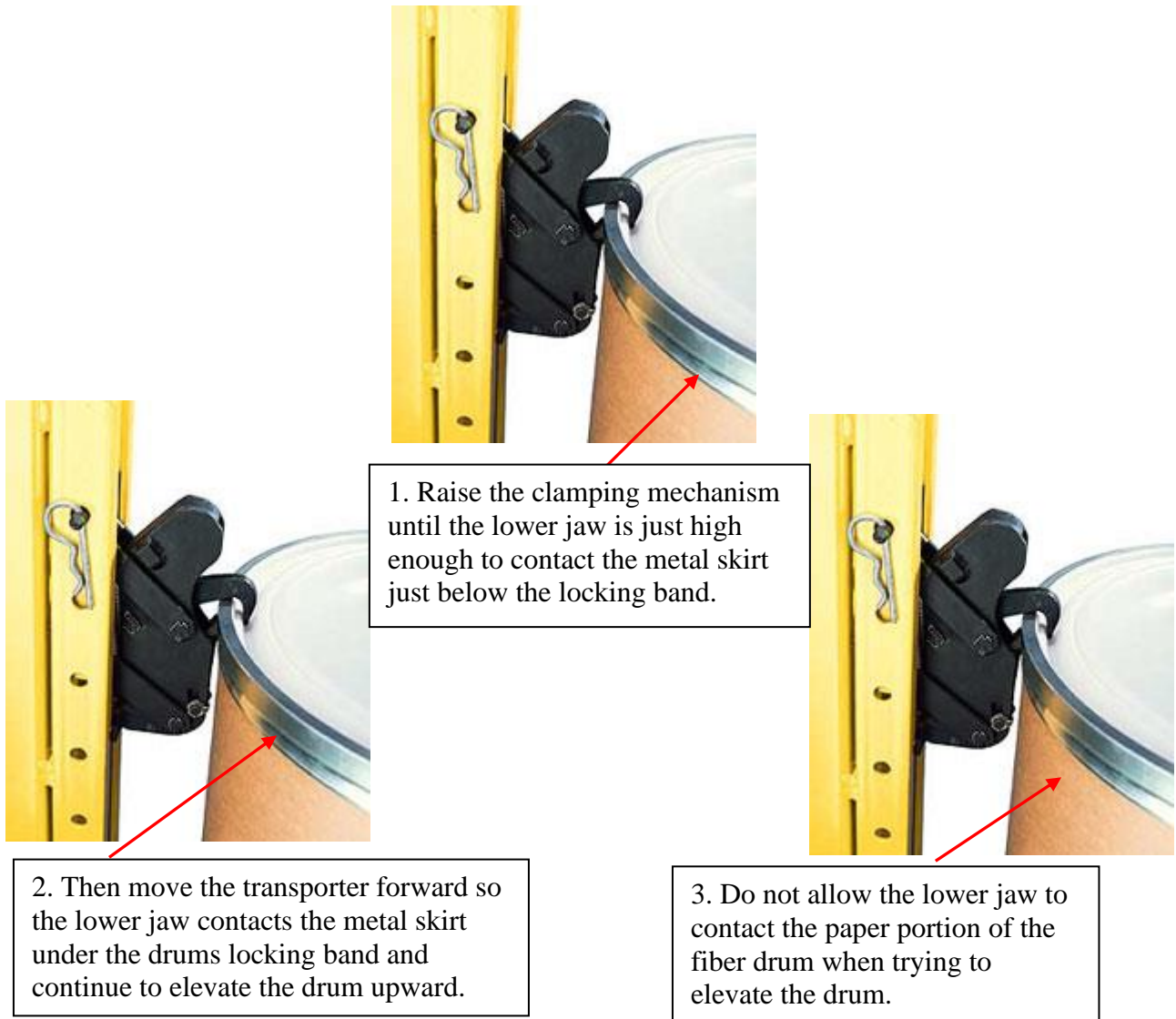
Hydraulic Fluid:

Non-FDA equipment: Hydraulic Oil AWG32

For FDA equipment: Food Grade 32/46 Hydraulic Synthetic Lubricant

THIS PAGE INTENTIONALLY LEFT BLANK

IMPORTANT NOTE FOR HANDLING FIBER DRUMS WITH AN EG1 SINGLE CLAMPING MECHANISM



IMPORTANT:

It is important that the lower jaw does not contact the paper portion of the drum when raising the drum. Keep the lower jaw away from the paper portion of the drum until the lower jaw of the clamping mechanism is high enough to contact the metal skirt below the locking band. Then push the transporter forward to contact the skirt and continue to elevate the clamping mechanism. If the lower jaw contacts the paper portion of the drum when elevating the drum, the clamping mechanism will attempt to clamp the drum in this position and miss or tear the skirt. If this is done incorrectly, lower the clamp and try again. The clamping mechanism can also grip the drum without the lid and locking band.

IMPORTANT NOTE FOR HANDLING FIBER DRUMS WITH AN EG2L DOUBLE CLAMPING MECHANISM



When handling fiber drums it is necessary to first engage the Fiber Drum Guards prior to attempting to grip a fiber drum.

TO ENGAGE THE FIBER DRUM GUARDS:

1. Remove the cotter pins on the top of each outer housing on both sides of the double clamping mechanism. Then, pull the Fiber Drum Guards forward.
2. With the Fiber Drum Guards in a forward position, reinsert the cotter pins, locking the guards in forward position.

The purpose of the Fiber Drum Guards is to keep the lower clamping jaws from contacting the paper side of the drum when elevating the clamp against the drum. With the Fiber Drum Guards in position, the lower clamping jaws will then move under the locking band of the drums lid when the clamp is elevated to the proper height. When not handling fiber drums, remove the cotter pins, move the Fiber Drum Guards back to the original position and reinsert the cotter pins to secure the Fiber Drum Guards back and out of the way.

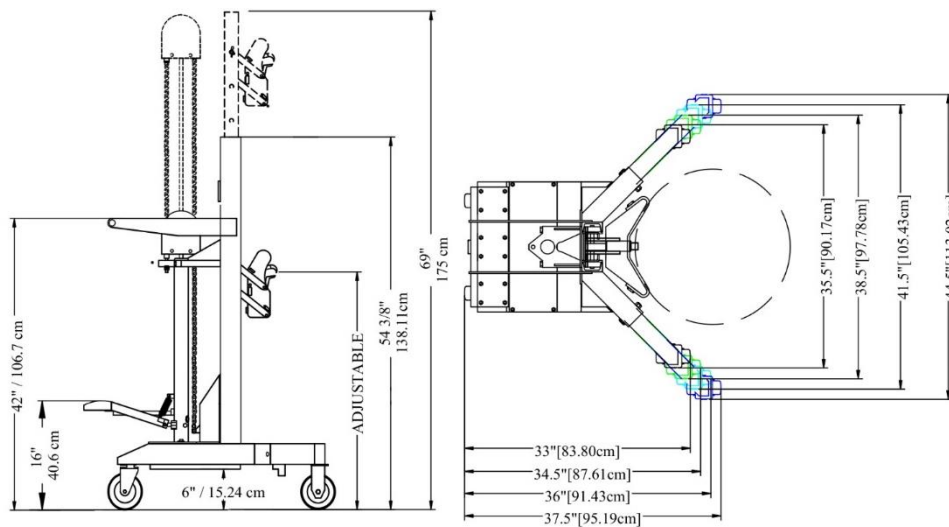
ERGONOMIC DRUM TRANSPORTERS WITH ADJUSTABLE LEG FEATURE

EasyLift Ergonomic Drum Transporters offer capacities from 400 lb. (181 kg) to 1,000 lb. (450 kg) via adjustable legs. The base of the machine is the same with two leg sets available, the first offers 400 lb. (181 kg), 600 lbs. (270 kg), or 800 lbs. (360 kg) capacities, the second offers 600 lbs. (270 kg), 800 lbs. (360 kg), or 1,000 lb. (450 kg) capacities.

Occasionally customers receive a new product in drums which has a weight that exceeds the original ordered capacity of their EasyLift Ergonomic Drum Transporter. Increasing or decreasing the capacity of these models is fast and simple. You can check the overall width of the EasyLift Equipment Ergonomic Drum Transporter to verify capacity using the chart below.

TO ADJUST THE LEGS:

1. Switching out the legs requires a forklift with adjustable forks. Adjust the forks accordingly by sliding them into position to ensure proper clearance under the Drum Transporter. Next, slowly approach the Drum Transporter with your forklift, inserting the forks entirely under the Drum Transporter and out the other side. Once the forks are in place, raise and tilt back slightly. The Drum Transporter only needs to be lifted to a minimal height to remove the pressure off the front legs and give the operator some room to safely maneuver. We do not recommend raising the Drum Transporter any higher than a few inches off the ground. For safety purposes; once the drum-transporter has been raised use a C-Clamp to secure the transporter to one of the forks.
2. Remove the nut, bolt, and lock washer that hold the leg in place and slide the legs in or out to align the bolt holes to the desired capacity configuration.
3. Re-insert the hardware in the same orientation that it had been removed and tighten the hardware completely. Repeat this same process on the other leg.
4. Remove the C-Clamp and lower the drum transporter back to the floor. The capacity has now been increased or decreased. Should the capacity on the transporter need to be increased, please contact us for a new specification plate and decal to meet the adjusted weight capacity.



EASY LIFT EQUIPMENT
2 MILL PARK CT
NEWARK, DE 19713

MODELS EL400 / EL600/ EL800 / EL1000
CAPACITY: 400 to 1000 lb. / 181.5 kg to 454 kg.
DRUM LIFT HEIGHT: 20" / 50.8 cm
MACHINE WEIGHT: 350 lb. / 159 kg.

OPTIONAL CAPACITY UP TO: 1500 lb. / 680 kg.
OPTIONAL DRUM LIFT HEIGHTS UP TO 72" / 189 cm

Easy Lift Equipment Co., Inc.

2 Mill Park Court, Newark, Delaware 19713 - Phone: 800-233-1800 / 302-737-7000

EASY LIFT EQUIPMENT WARRANTY POLICY FOR MODELS WITH PREFIXES: ED/ER/EL/ELDR/EG & RCR

Easy Lift Equipment (“ELE”) warrants each new product to be free from factory material and workmanship defects, under normal use with proper maintenance, for a period of 12 months. Warranty coverage for this warranty period is provided by authorized dealers and includes parts. Labor is covered for the same periods of 12 months as outlined above. Please call ELE for the authorized repair dealer in your area.

ELE shall be the sole judge of the validity of any claim or defect and may elect to make any replacement or repair of any part thereof that it has agreed to be defective. Wearable Items such as: hoses, bearings, belts, brushes, seals, lift motors, clamp motors, relays, fuses, springs and wheels are wear items not covered under the warranty policy. ELE assumes no responsibility whatsoever to work done, parts replaced, or expenses incurred not specifically authorized by ELE. Normal maintenance or replacement of service items is not covered by this warranty. No warranty claims will be considered for customers with any delinquent outstanding balance. When batteries, battery chargers, scale printers or scale indicators are purchased from ELE with the equipment, the original manufacturer’s warranty applies.

WARRANTY LIMITATION/DISCLAIMERS:

Easy Lift Equipment reserves the right to void warranty coverage if the unit has been overloaded beyond rated capacity; damaged due to: abuse, misuse, neglect, accidents, freight damage, improper usage, improper repair, and/or improper storage; or any modification or repair conducted in a manner not approved by Easy Lift Equipment. Equipment used in freezers, abrasive, corrosive, and/or excessively moist conditions must be properly equipped for the environment to ensure the warranty is not voided. Warranty questions and claims should be directed to our customer service department. ELE customer service representatives will help you assess and resolve the claim or assist you in contacting the local authorized dealer or representative. The warranty described here shall constitute the sole remedy of the authorized dealer and/or the initial purchaser. ELE neither assumes nor authorizes any person to assume for it any other obligation or responsibility in connection with this product warranty. In no event shall ELE be responsible for direct, indirect, special or consequential damages or any other delay or any economic or commercial loss resulting from Easy Lift Equipment’s performance or non-performance under this warranty. This warranty is expressly in lieu of all warranties, obligations or responsibilities of ELE dealers or other authorized source, expressed, implied or statutory.

SUBMITTING CLAIMS:

To make a claim under this policy, please contact Easy Lift Equipment for assistance. We can be reached by calling 800-233-1800 ext. 4 for customer service or by writing to sales@easylifteqpt.com. Do not return defective parts unless a return authorization (RA) has been provided requesting the return. If requested, we will provide shipping information on how the part should be returned and bear the expense for the return shipping, if the part is proven to be defective. A copy of the work order made at the time of the repair and parts claimed under warranty may be requested for ELE’s inspection.

ORDERING PARTS:

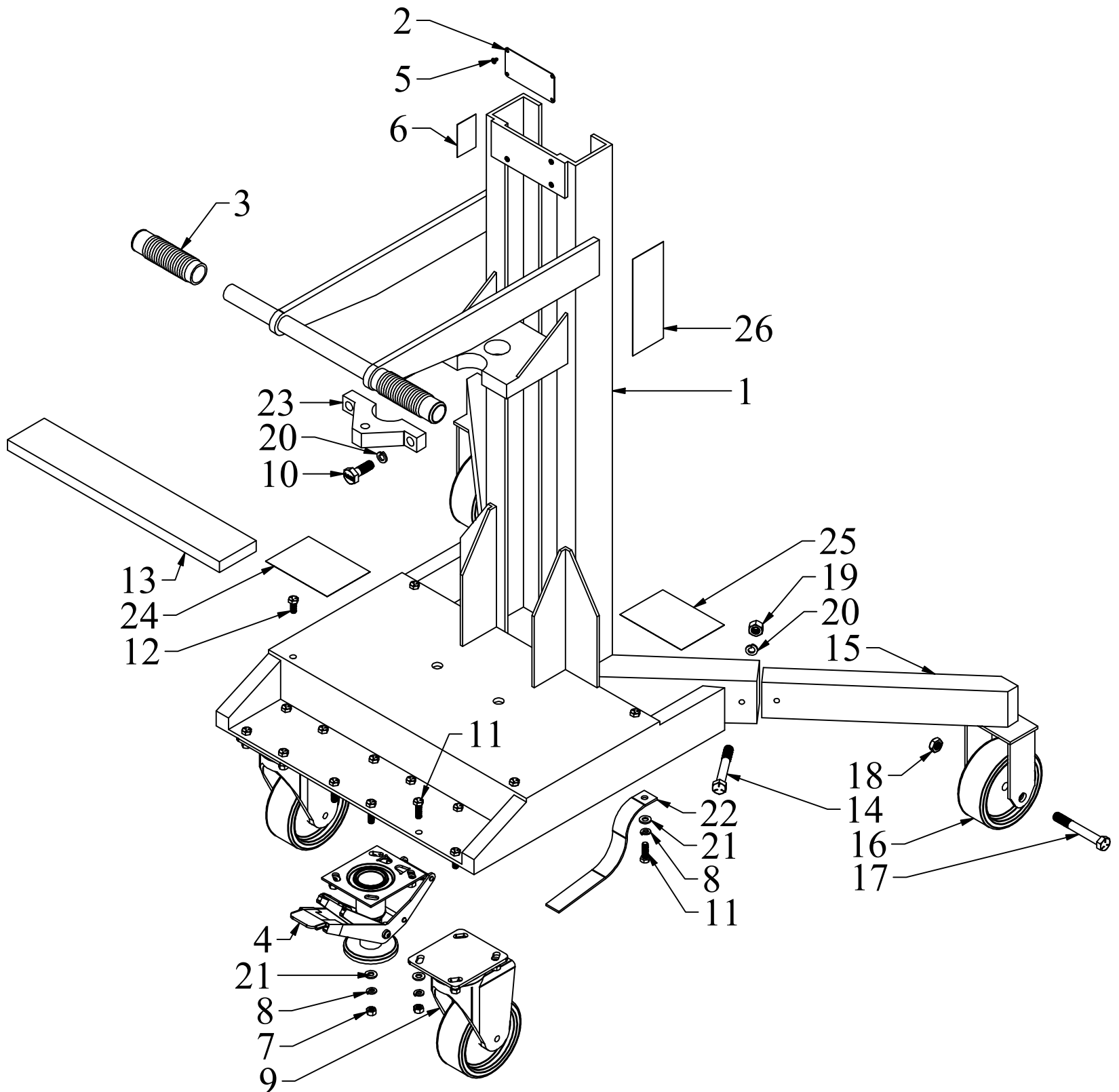
Easy Lift Equipment’s parts are distributed through our customer service department and ship the same day as ordered whenever possible. You will be well taken care of whenever parts, adjustments or repairs are needed. **When contacting ELE, please be sure to state the model and serial number for the equipment.** There is no cost for electronic copies of replacement manuals, parts lists and other general information containing part numbers and nomenclature. Most manuals contain parts pricing, but it is not guaranteed to be valid as parts pricing can change at any time without notice. Any customer service representative can provide timely parts quotations upon request. Adherence to above procedure will save time and provide prompt assistance when it counts. You are of course always welcome to bring to us any questions, comments or recommendations pertaining to your Easy Lift Equipment products.

MANUFACTURER CONTACT INFORMATION:

Easy Lift Equipment Co., Inc.
2 Mill Park Ct.
Newark, DE 19713
Email: sales@easylifteqpt.com

Phone: 800-233-1800: 302-737-7000
Fax: 302-737-7333
Website: www.easylifteqpt.com

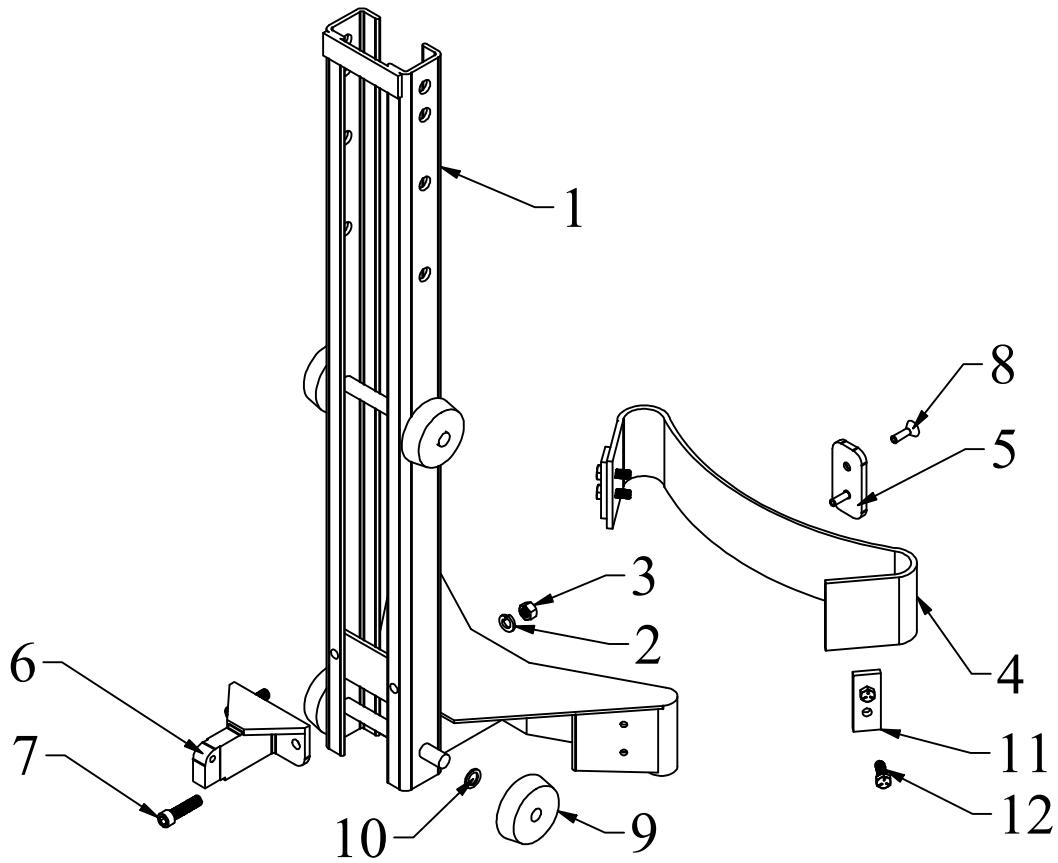
EASYLIFT ERGONOMIC DRUM TRANSPORTER FRAME ASSEMBLY



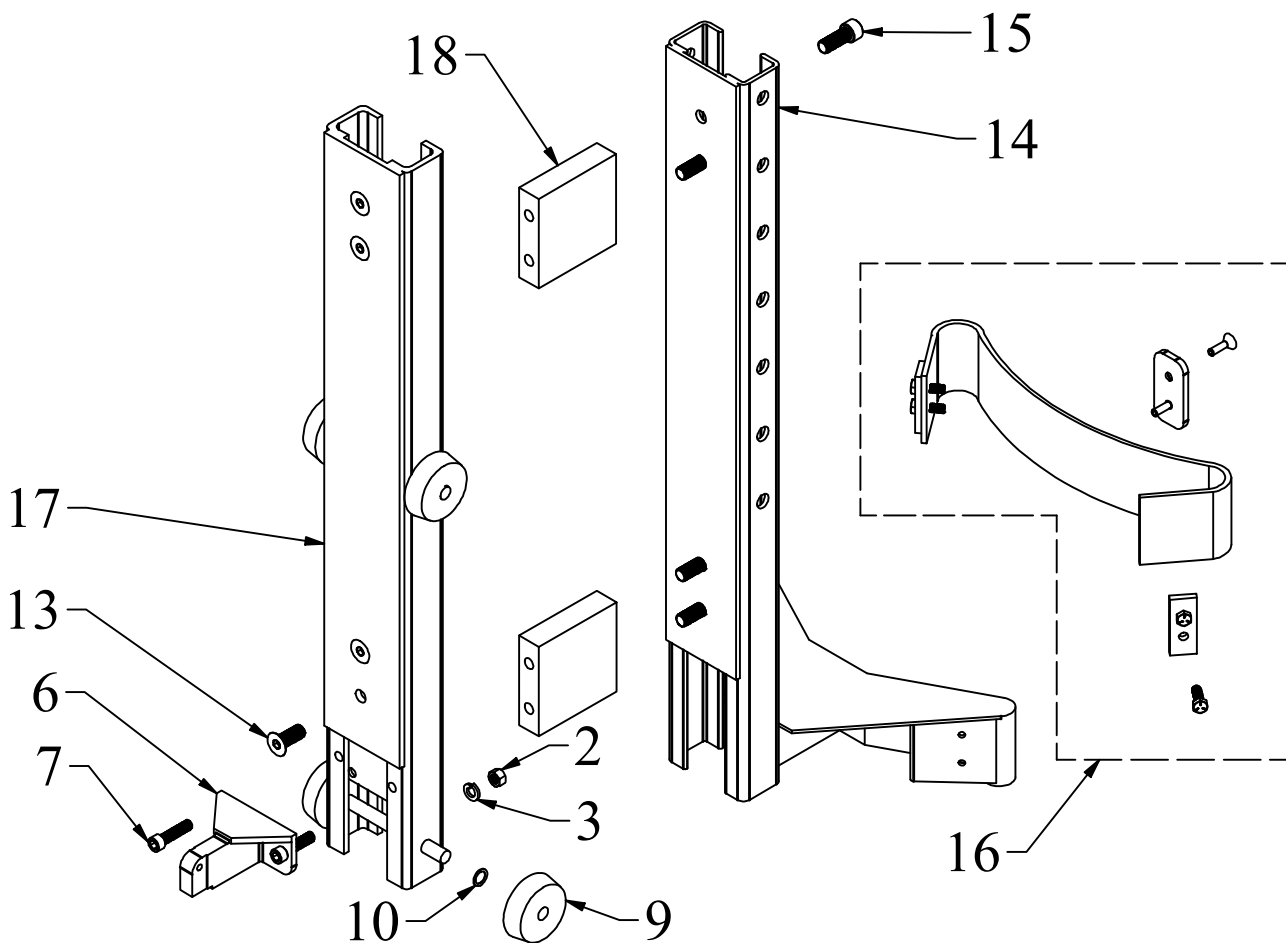
EASYLIFT ERGONOMIC DRUM TRANSPORTER FRAME PARTS LIST

<u>ITEM</u>	<u>PART NO.</u>	<u>DESCRIPTION</u>	<u>QTY</u>
1	3530113	EL Frame (20" lift, foot pump)	1
1	3530114	EL Frame (40" lift, foot pump)	1
1	3530115	EL Frame (60" lift, foot pump)	1
2	MCL007031	Specification Plate	1
3	65657	Handle Grips	2
4	16LF0580	Step Down Floor Lock (for 5" wheels)	1
4	16LF0880	Step Down Floor Lock (for 8" wheels)	1
5	6 x 1/4 RU DS-SS	6 x 1/4 Round Head U Drive Screw (stainless steel)	4
6	ADART009	Warning 5 Degree Decal for ELE & EL	1
7	5/16-18 HN	5/16-18 Finished Hex Nut (zinc)	12
7	5/16-18 HN-SS	5/16-18 Finished Hex Nut (stainless steel)	12
8	5/16 LW	5/16 Lock Washer (zinc)	13
8	5/16 LW-SS	5/16 Lock Washer (stainless steel)	13
9	31-405-PSE	5" Swivel Caster with PSE Wheel	2
9	31-408B-PSE	8" Swivel Caster with PSE Wheel & Brake	2
10	1/2-13 x 1 1/2 HHCS	1/2-13 x 1 1/2 Hex Head Cap Screw Grade 5 (zinc)	2
10	1/2-13 x 1 1/2 HHCS-SS	1/2-13 x 1 1/2 Hex Head Cap Screw (stainless steel)	2
11	5/16-18 X 1 HHCS	5/16-18 x 1 Hex Head Cap Screw Grade 5 (zinc)	13
11	5/16-18 X 1 HHCS-SS	5/16-18 x 1 Hex Head Cap Screw (stainless steel)	13
12	5/16-18 x 3/4 HHCS	5/16-18 x 3/4 Hex Head Cap Screw Grade 5 (zinc)	4
12	5/16-18 x 3/4 HHCS-SS	5/16-18 x 3/4 Hex Head Cap Screw (stainless steel)	4
13	1" x 3" x 17-1/4" HRFB CW	1" x 3" x 17-1/4" HRFB Ergo Counter Weight	8
13	3/4" x 3" x 17-1/4" HRFB CW	3/4" x 3" x 17-1/4" HRFB Ergo Counter Weight	1
14	1/2-13 x 3 3/4 HHCS	1/2-13 x 3 3/4 Hex Head Cap Screw Grade 5 (zinc)	2
14	1/2-13 x 3 3/4 HHCS-SS	1/2-13 x 3 3/4 Hex Head Cap Screw (stainless steel)	2
15	3530210	EL Leg Set for 5" Casters at 400lb, 600lb or 800lb capacity	1
15	3530211	EL Leg Set for 5" Casters at 600lb, 800lb or 1,000lb capacity	1
15	3530212	EL Leg Set for 8" Casters at 400lb, 600lb or 800lb capacity	1
15	3530213	EL Leg Set for 8" Casters at 600lb, 800lb or 1,000lb capacity	1
16	W-405-PSE	5" PSE Wheel Only	2
16	W-408-PSE	8" PSE Wheel Only	2
17	1/2-20 x 3 1/4 HHCS	1/2-20 x 3 1/4 Hex Head Cap Screw (zinc)	2
18	1/2-20 THIN NLN	1/2-20 Thin Nylon Locking Nut (Zinc)	2
19	1/2-13 HN	1/2-13 Finished Hex Nut (zinc)	2
19	1/2-13 HN-SS	1/2-13 Finished Hex Nut (stainless steel)	2
20	1/2 LW	1/2 Lock Washer (zinc)	4
20	1/2 LW-SS	1/2 Lock Washer (stainless steel)	4
21	5/16 FW	5/16 Flat Washer (zinc)	13
21	5/16 FW-SS	5/16 Flat Washer (stainless steel)	13
22	S-207	Grounding Strap	1
23	35091	Cylinder Clamp Bracket	1
24	ADART002	Attention Read Operations Manual Decal	1
25	ADART800	800lbs Capacity Sticker	1
26	ADART016	ELE Address Decal (Vertical)	2

INNER MAST ASSEMBLY



INNER AND OUTER MAST ASSEMBLY



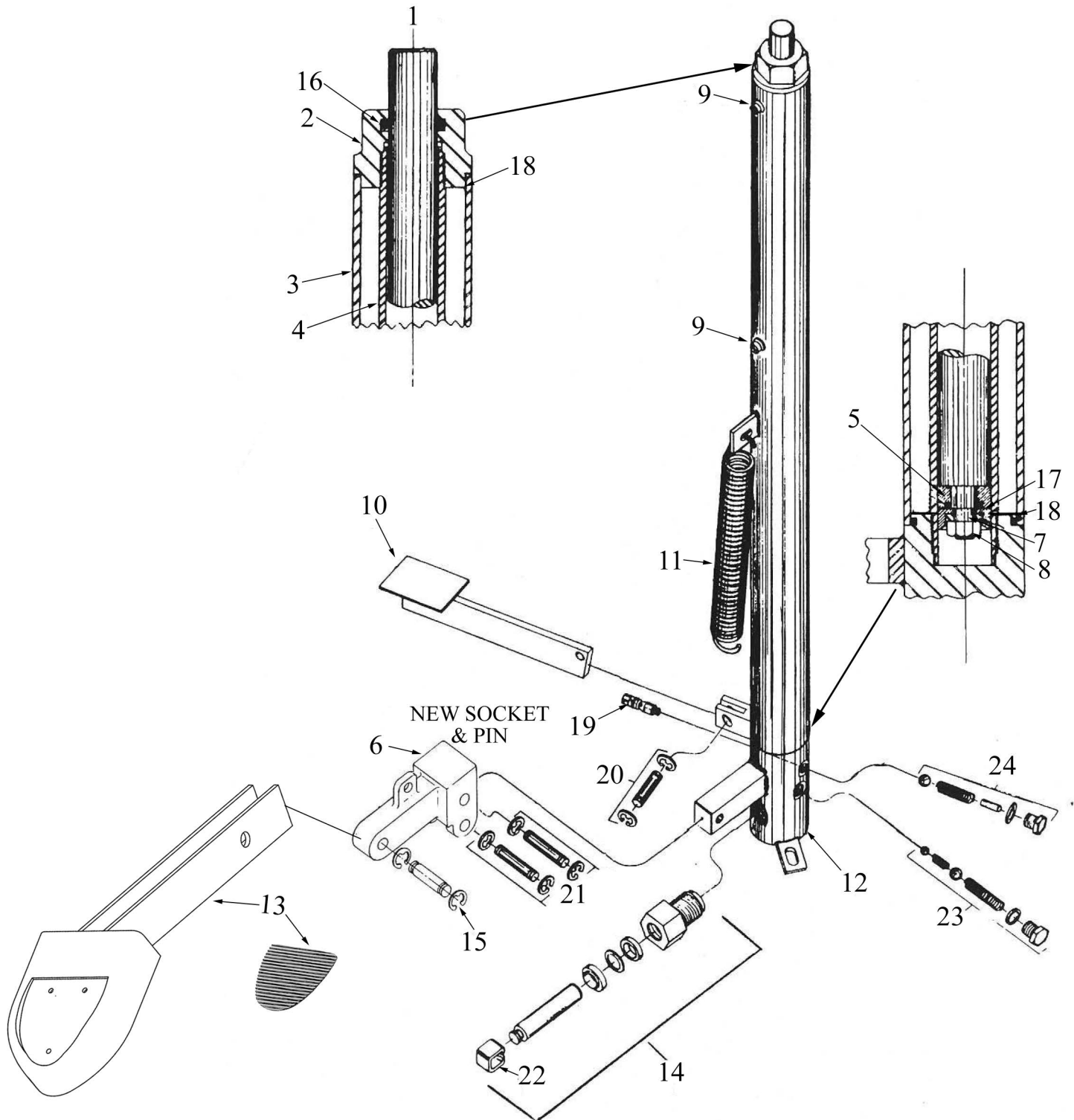
INNER MAST PARTS LIST

<u>ITEM</u>	<u>PART NO.</u>	<u>DESCRIPTION</u>	<u>QTY</u>
1	3912	32" High Inner Mast with 5" Belt Cradle	1
2	3/8-16 HN	3/8-16 Finished Hex Nut (zinc)	2
2	3/8-16 HN-SS	3/8-16 Finished Hex Nut (stainless steel)	2
3	3/8 LW	3/8 Lock Washer (zinc)	2
3	3/8 LW-SS	3/8 Lock Washer (stainless steel)	2
4	3516	Rubber Belt	1
5	2580051	EG1/Ergo UHMW Belt Support	1
6	8912	Chain to Mast Bracket	1
6	8912HR	High Reach Chain to Mast Bracket	1
7	3/8-16 x 1 1/2 SHCS	3/8-16 x 1 1/2 Socket Head Cap Screw Alloy Plated	2
7	3/8-16 x 1 1/2 SHCS-SS	3/8-16 x 1 1/2 Socket Head Cap Screw (stainless steel)	2
8	5/16-18 x 1 FSHCS-SS	5/16-18 x 1 Flat Socket Head Cap Screw (stainless steel)	6
9	4008	Delrin Roller	4
10	90295A187	1/16" Nylon Flat Washer	-
10	95606A170	1/32" Nylon Flat Washer	-
11	2580050	EG1/Ergo Belts Clamp Straps	2
12	5/16-18 X 1 HHCS	5/16-18 x 1 Hex Head Cap Screw Grade 5 (zinc)	4
12	5/16-18 X 1 HHCS-SS	5/16-18 x 1 Hex Head Cap Screw (stainless steel)	4

INNER AND OUTER MAST PARTS LIST

<u>ITEM</u>	<u>PART NO.</u>	<u>DESCRIPTION</u>	<u>QTY</u>
2	3/8-16 HN	3/8-16 Finished Hex Nut (zinc)	2
2	3/8-16 HN-SS	3/8-16 Finished Hex Nut (stainless steel)	2
3	3/8 LW	3/8 Lock Washer (zinc)	2
3	3/8 LW-SS	3/8 Lock Washer (stainless steel)	2
6	8912	Chain to Mast Bracket	1
6	8912HR	High Reach Chain to Mast Bracket	1
7	3/8-16 x 1 1/2 SHCS	3/8-16 x 1 1/2 Socket Head Cap Screw Alloy Plated	2
7	3/8-16 x 1 1/2 SHCS-SS	3/8-16 x 1 1/2 Socket Head Cap Screw (stainless steel)	2
9	4008	Delrin Roller	4
10	90295A187	1/16" Nylon Flat Washer	-
10	95606A170	1/32" Nylon Flat Washer	-
13	1/2-20 x 1 1/4 FSHCS	1/2-20 x 1 1/4 Flat Socket Head Cap Screw (zinc)	4
14	2580453	32" High Outer Mast with 3" Belt Cradle	1
15	1/2-20 x 1 1/4 SHCS	1/2-20 x 1 1/4 Socket Head Cap Screw Alloy Plated	4
16	5516E	Optional: Belt Cradle Kit (includes all hardware)	1
17	2580401	32" High Inner Mast (Scale)	1
18	LCRB	Load Cell Replacement Block	2
18	HM1000	Load Cell with 4' cable	2

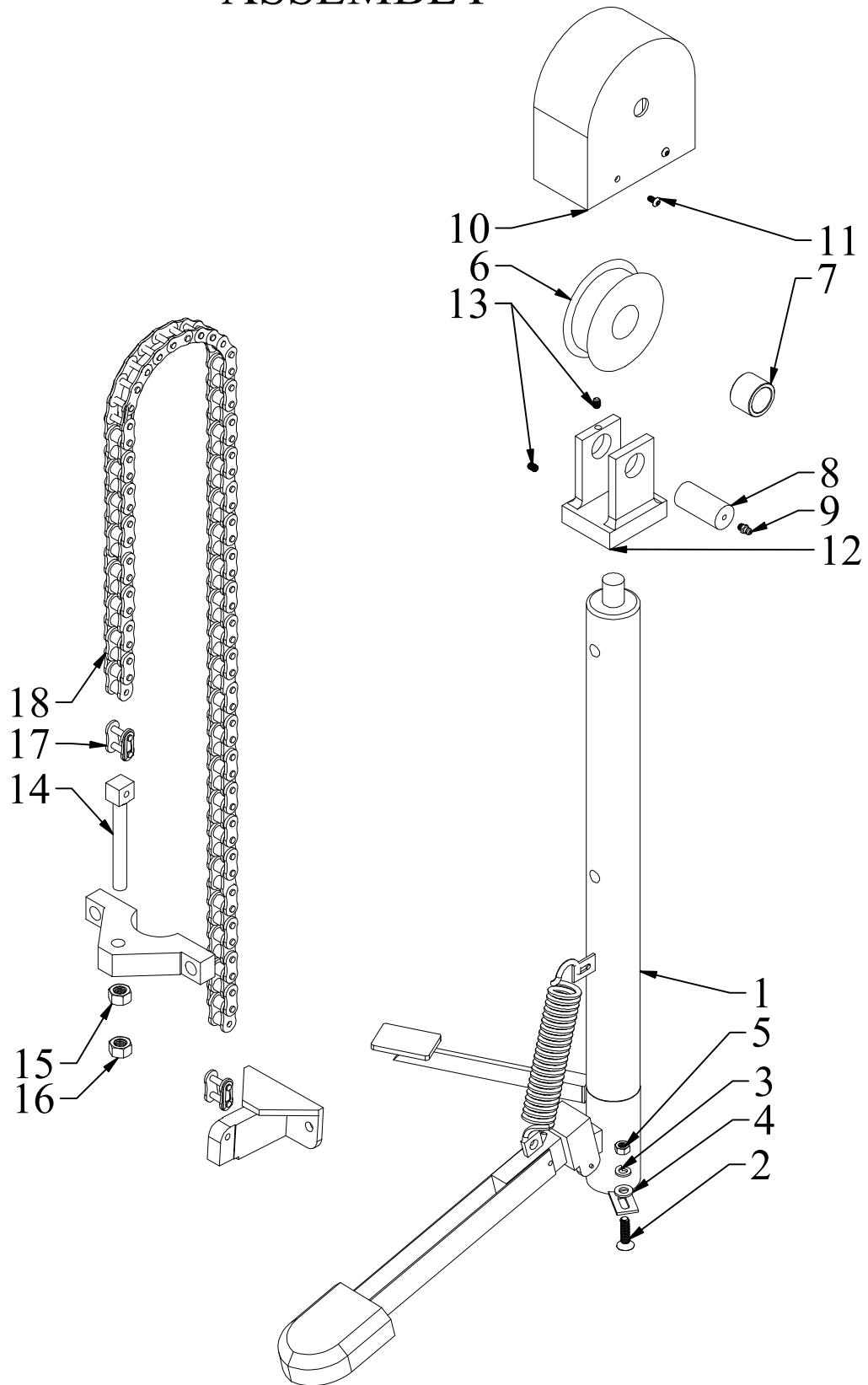
HF500 FOOT OPERATED HYDRAULIC CYLINDER ASSEMBLY



HF500 FOOT OPERATED HYDRAULIC CYLINDER PARTS LIST

<u>ITEM</u>	<u>PART NO.</u>	<u>DESCRIPTION</u>	<u>QTY</u>
1	HF500-6	RAM - Specify travel	1
2	HF500-3	Top Nut	1
3	HF500-2	Reservoir Tube - Specify Travel	1
4	HF500-5	Inside Cylinder Tube - Specify Travel	1
5	HF500-8	RAM Cup Support Washer	1
6	HF500-43	Socket	1
7	HF500-9	RAM Cup Washer	1
8	QH525-13	RAM Cup Nut	1
9	HF500-30	Filler Screw & Washer Sets of 2	1
10	HF500-23	Foot Release Lever Assembly	1
11	2206	Housing to Housing Spring (zinc)	1
12	HF500-1RP	Body Assembly - NOT AVAILABLE	1
13	MK2429-44	Lever Arm with Rubber	1
 <u>INDIVIDUAL KIT PARTS</u>			
14	HF500-54RP	Pump Piston Assembly (complete)	1
15	HF500-42RP	Lever Arm Pin (including cotter pins)	1
16	HF500-4	Top Nut O-Ring	1
17	HF500-7	RAM Cup	1
18	HF500-32	Body O-Ring Set of 2	1
19	HF500-15RP	Release Plunger (including seals)	1
20	HF500-24RP	Release Lever Pin (including cotter pins)	1
21	HF500-25RP	Lever Socket Pin Set of 2 (including cotter pins)	1
22	HF500-29	Pump Piston Clip	1
23	HF500-51RP	Pump Valve	1
24	HF500-50RP	Release Valve	1
 <u>FULL REPAIR KIT</u>			
	HF500-53RP	Hydraulic Repair Kit	
 <u>CYLINDER ASSEMBLIES</u>			
	MK2429-20	Hydraulic Lift Cylinder	
	MK2429-20FG	Hydraulic Lift Cylinder (with Food Grade Hyd. Oil)	
	MK2429-20SS	Stainless Steel Hydraulic Lift Cylinder	
	MK2429-25	Hydraulic Lift Cylinder	
	MK2429-25FG	Hydraulic Lift Cylinder (with Food Grade Hyd. Oil)	
	MK2429-33	Hydraulic Lift Cylinder	
	MK2969	Lift Jack, Stainless Steel - 33" Stroke	

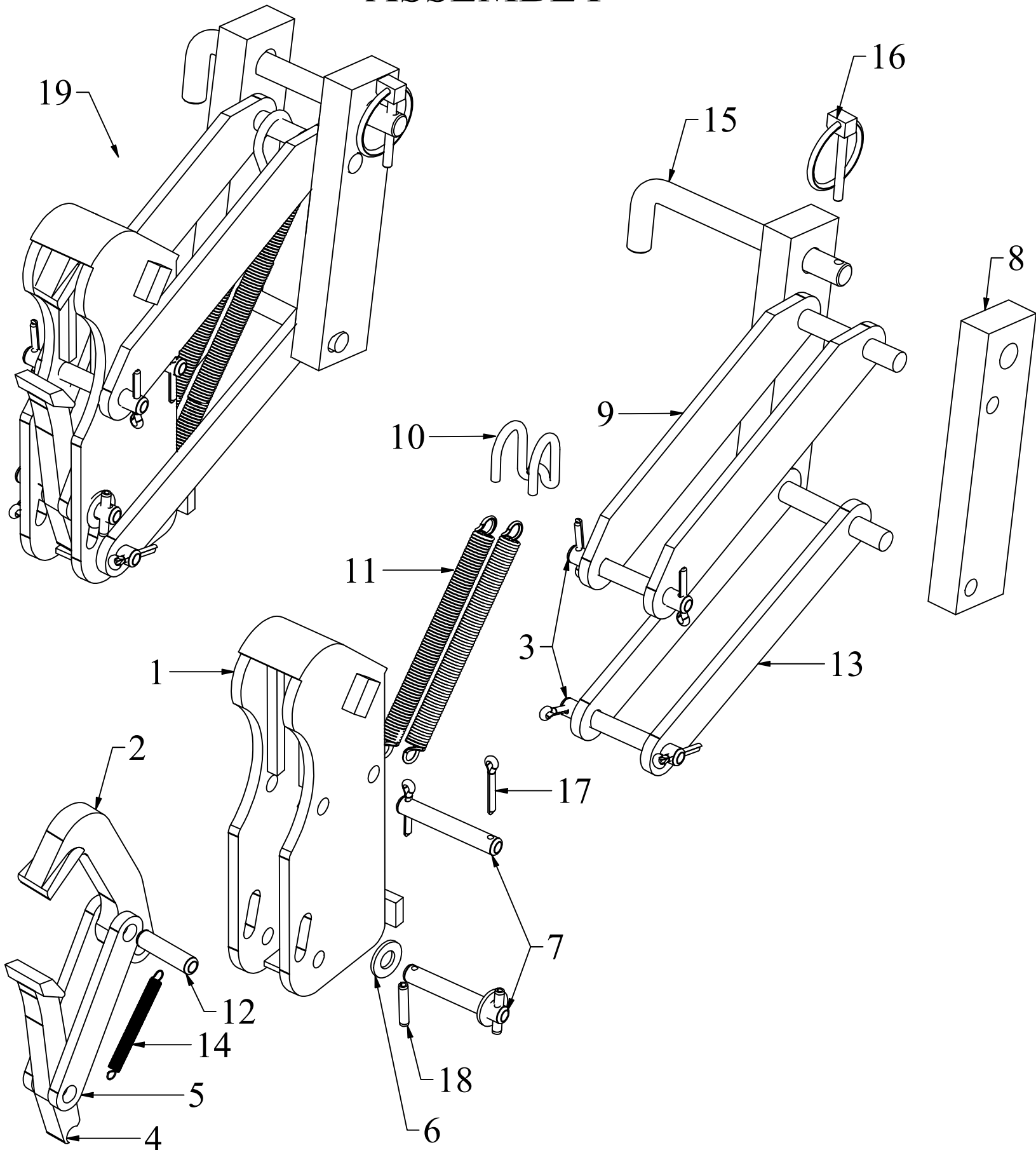
DRUM TRANSPORTER FOOT PUMP LIFT CHAIN ASSEMBLY



DRUM TRANSPORTER FOOT PUMP LIFT CHAIN PARTS LIST

<u>ITEM</u>	<u>PART NO.</u>	<u>DESCRIPTION</u>	<u>QTY</u>
1	MK2429-20	Hydraulic Lift Cylinder	1
1	MK2429-20FG	Hydraulic Lift Cylinder (with Food Grade Hyd. Oil)	1
1	MK2429-20SS	Stainless Steel Hydraulic Lift Cylinder	1
1	MK2429-25	Hydraulic Lift Cylinder	1
1	MK2429-25FG	Hydraulic Lift Cylinder (with Food Grade Hyd. Oil)	1
1	MK2429-33	Hydraulic Lift Cylinder	1
1	MK2969	Lift Jack, Stainless Steel - 33" Stroke	1
-	HF500-53RP	Hydraulic Repair Kit	-
2	5/16-18 x 1 1/4 FSHCS-SS	5/16-18 x 1 1/4 Flat Socket Head Cap Screw (stainless steel)	2
3	5/16 LW	5/16 Lock Washer (zinc)	2
3	5/16 LW-SS	5/16 Lock Washer (stainless steel)	2
4	5/16 FW	5/16 Flat Washer (zinc)	2
4	5/16 FW-SS	5/16 Flat Washer (stainless steel)	2
5	5/16-18 HN	5/16-18 Finished Hex Nut (zinc)	2
5	5/16-18 HN-SS	5/16-18 Finished Hex Nut (stainless steel)	2
6	55061	4" Sheave Wheel	1
7	CB-1622-08	Sheave Wheel Bushing	1
8	45061	Sheave Wheel Axle (1" x 2.125")	1
9	1095K41	1/4"-28 Grease Fitting	1
10	3022	4" Sheave Wheel Cover	1
11	10-24 x 3/8 BSC-SS	10-24 x 3/8 Button Socket Cap 18/8 (stainless steel)	4
12	7912-4-1	Sheave Wheel Bracket 4" (1" bore)	1
13	93445A425	1/4"-20 x 3/8" Stainless Steel Knurl-Grip Set Screw	2
14	2022	Chain Adjuster for ANSI 60 Chain	1
15	1/2-13 HN	1/2-13 Finished Hex Nut (zinc)	1
15	1/2-13 HN-SS	1/2-13 Finished Hex Nut (stainless steel)	1
16	1/2-13 NLN	1/2-13 Nylon Locking Nut	1
16	1/2-13 NLN-SS	1/2-13 Nylon Locking Nut (Stainless Steel)	1
17	60HMCL	ANSI 60 Link	2
18	RC060RC1-49	Chain-Ansi 60 (49" Long)	1
18	RC060RC1-49PC	FDA Chain-Ansi 60 (49" Long)	1
18	RC060RC1-65	Chain-Ansi 60 for Ergo (65" Long)	1
18	RC060RC1-65PC	FDA Chain-Ansi 60 for Ergo (65" Long)	1
18	RC060RC1-73	Chain-Ansi 60 for Ergo (73" Long)	1
18	RC060RC1-73PC	FDA Chain-Ansi 60 for Ergo (73" Long)	1

EG1 LIGHT DUTY SINGLE CLAMPING MECHANISM ASSEMBLY



EG1 LIGHT DUTY SINGLE CLAMPING MECHANISM PARTS LIST

<u>ITEM</u>	<u>PART NO.</u>	<u>DESCRIPTION</u>	<u>QTY</u>
1	6302	Housing (Black Powder Coating)	1
1	6302SS	Housing (Stainless Steel)	1
2	9107SS	Stainless Steel Upper Jaw (Spark Resistant)	1
3	15104-1SS	3/8" x 2.242" Pin, Fibre Guard, Housing to Clevis (stainless steel)	2
4	7107SS	Stainless Steel Lower Jaw (Spark Resistant)	1
5	13009-1	Link, Jaw to Jaw (zinc)	2
5	13009-1SS	Link, Jaw to Jaw (stainless steel)	2
6	1470-6	Custom Washer EG (Stainless Steel)	2
7	16104-1SS	3/8" x 1.770" Pin, Upper Jaw Link (stainless steel)	2
8	8002	Adjustment Slide (FDA Black Powder Coating)	2
8	8002SS	Adjustment Slide (Stainless Steel)	2
9	5912	Upper Clevis 8" (FDA Black Powder Coating)	1
9	5912SS	Upper Clevis 8" (Stainless Steel)	1
9	5912S	Upper Clevis 6" (FDA Black Powder Coating - Double Mast)	1
9	5912SS-S	Upper Clevis 6" (Stainless Steel - Double Mast)	1
10	8996-2	Clevis Spring Hook (Stainless Steel)	1
11	8206	Clevis Spring (zinc)	2
12	41041SS	3/8" x 1" Pin, Upper Jaw to Link, short (stainless steel)	1
13	6912	Lower Clevis 7 1/2" (FDA Black Powder Coating)	1
13	6912SS	Lower Clevis 7 1/2" (Stainless Steel)	1
13	6912S	Lower Clevis 5 1/2" (FDA Black Powder Coating - Double Mast)	1
13	6912SS-S	Lower Clevis 5 1/2" (Stainless Steel - Double Mast)	1
14	1206	Spring, Jaw to Housing (stainless steel)	1
15	10204-1SS	1/2" x 4-1/2" Adjusting Pin (stainless steel)	1
16	HANG-1	3/16 x 1-1/4 Shank Lynch Pin "Hang 1" (9016)	1
17	3006-CP	Cotter Pin, 1/8" x 3/4" (zinc)	6
17	1/8 x 3/4 CP-SS	1/8 x 3/4 Cotter Pins (stainless steel)	6
18	5/32 x 1/2 Roll Pin	Stainless Steel 5/32 x 1/2 Roll Pin	2
	WLG	12oz White Lithium Grease	1
<u>FULL ASSEMBLIES</u>			
19	9004	EG1 Single Clamping Mechanism (FDA Black Powder Coating)	
19	9004S	EG1 Single Clamping Mechanism (FDA Black Powder Coating - Double Mast)	
19	9004SRC	EG1 Single Clamping Mechanism (Stainless Steel Housing - Non-Sparking)	
19	9004SRC-S	EG1 Single Clamping Mechanism (Stainless Steel Housing - Non-Sparking - Double Mast)	
19	9004SS	EG1 Single Clamping Mechanism (Stainless Steel - Non-Sparking)	
19	9004SS-S	EG1 Single Clamping Mechanism (Stainless Steel - Non-Sparking - Double Mast)	
<u>PREVENTATIVE MAINTENANCE KITS</u>			
	EG1PMKIT	EG1 Preventative Maintenance Kit	
	EG1BCPMKIT	EG1 Preventative Maintenance Kit w/ Belt Cradle	

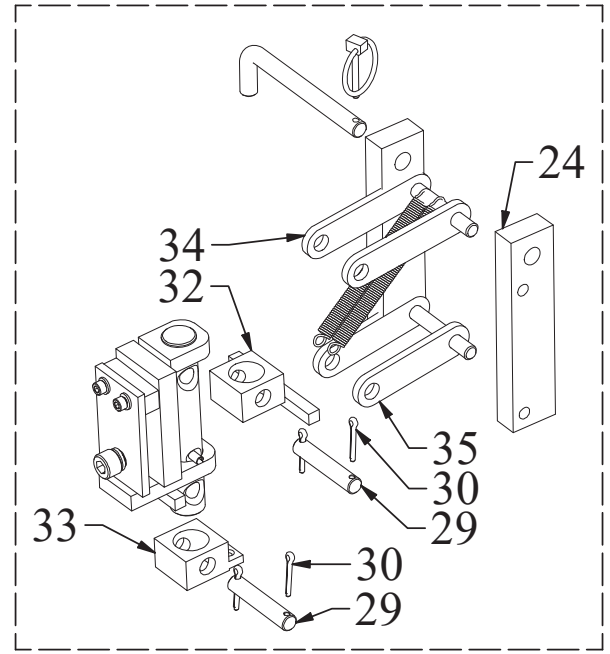
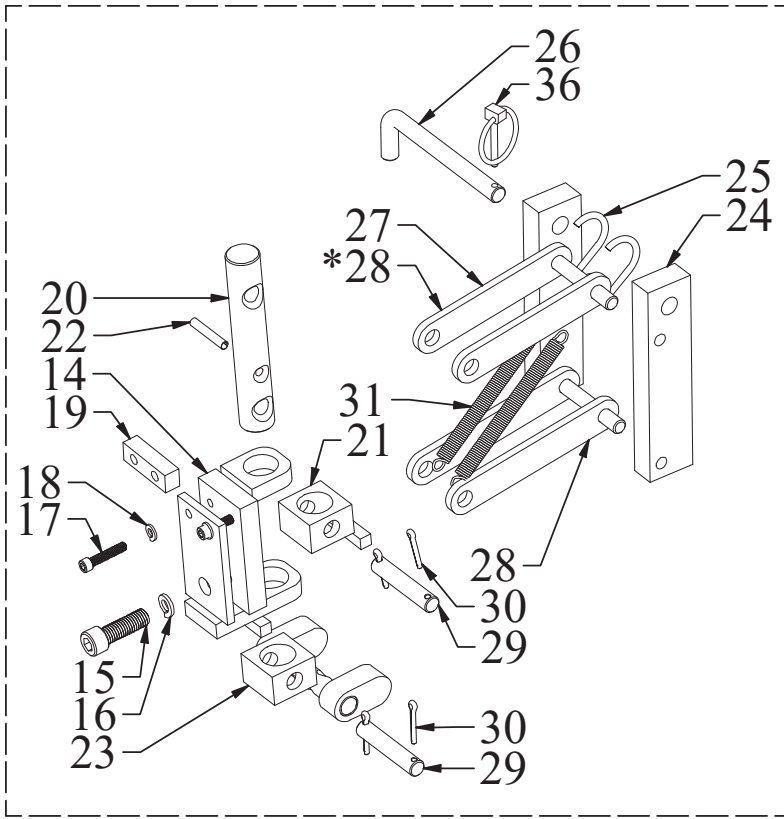
**EG1 SINGLE CLAMPING MECHANISM
PREVENTATIVE MAINTENANCE KIT BREAKDOWN**

EG1 PREVENTATIVE MAINTENANCE KIT			
<u>ITEM</u>	<u>PART NO.</u>	<u>DESCRIPTION</u>	<u>QTY</u>
11	8206	Clevis Spring (zinc)	2
14	1206	Spring, Jaw to Housing (stainless steel)	1
16	HANG-1	3/16 x 1-1/4 Shank Lynch Pin "Hang 1" (9016)	1
17	3006-CP	Cotter Pin, 1/8" x 3/4" (zinc)	6
18	5/32 x 1/2 Roll Pin	Stainless Steel 5/32 x 1/2 Roll Pin	2
	WLG	12oz White Lithium Grease	1
ALL ABOVE ITEMS PART NUMBER: EG1PMKIT			

EG1 PREVENTATIVE MAINTENANCE WITH BELT CRADLE KIT			
	<u>PART NO.</u>	<u>DESCRIPTION</u>	<u>QTY</u>
11	8206	Clevis Spring (zinc)	2
13	5516E	Optional: Belt Cradle Kit (includes all hardware)	1
14	1206	Spring, Jaw to Housing (stainless steel)	1
16	HANG-1	3/16 x 1-1/4 Shank Lynch Pin "Hang 1" (9016)	1
17	3006-CP	Cotter Pin, 1/8" x 3/4" (zinc)	6
18	5/32 x 1/2 Roll Pin	Stainless Steel 5/32 x 1/2 Roll Pin	2
	WLG	12oz White Lithium Grease	1
ALL ABOVE ITEMS PART NUMBER: EG1BCPMKIT			

THIS PAGE INTENTIONALLY LEFT BLANK

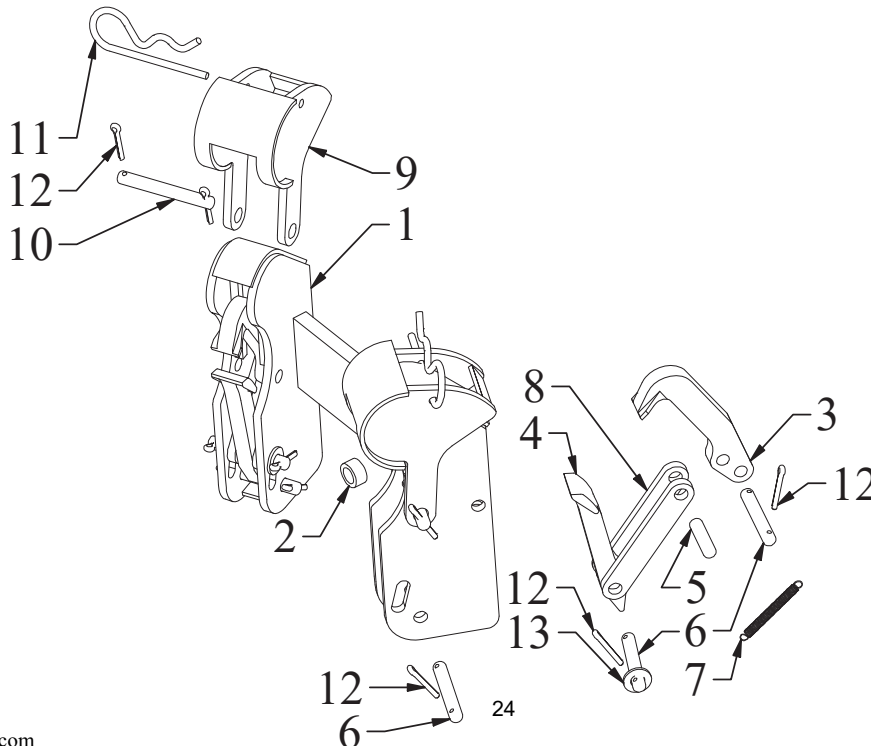
EG2 LIGHT DUTY DOUBLE CLAMPING MECHANISM ASSEMBLY



SEEN ON LEFT: **ERGO UNITS WITH A 5" BELT CRADLE** WILL PRIMARILY USE A 6" UPPER CLEVIS (#27) AND A 5-1/2" LOWER CLEVIS (#28). ALONG WITH A LOWER PIVOT BLOCK WITH OVAL STOP BARS (#23) AND AN UPPER PIVOT BLOCK WITH A 2-1/4" STOP BAR (#21).

***EAGLE-GRIP ATTACHMENTS** WILL PRIMARILY USE 5-1/2" LOWER CLEVISES (#28) FOR BOTH THE TOP AND BOTTOM CLEVISES.

SEEN ON THE RIGHT: **ERGO UNITS WITH A 3" BELT CRADLE** WILL PRIMARILY USE A 4-1/2" UPPER CLEVIS (#34) AND A 4" LOWER CLEVIS (#35). ALONG WITH A LOWER PIVOT BLOCK (#33) AND AN UPPER PIVOT BLOCK WITH A 3-3/4" STOP BAR (#32).



EG2 LIGHT DUTY DOUBLE CLAMPING MECHANISM PARTS LIST

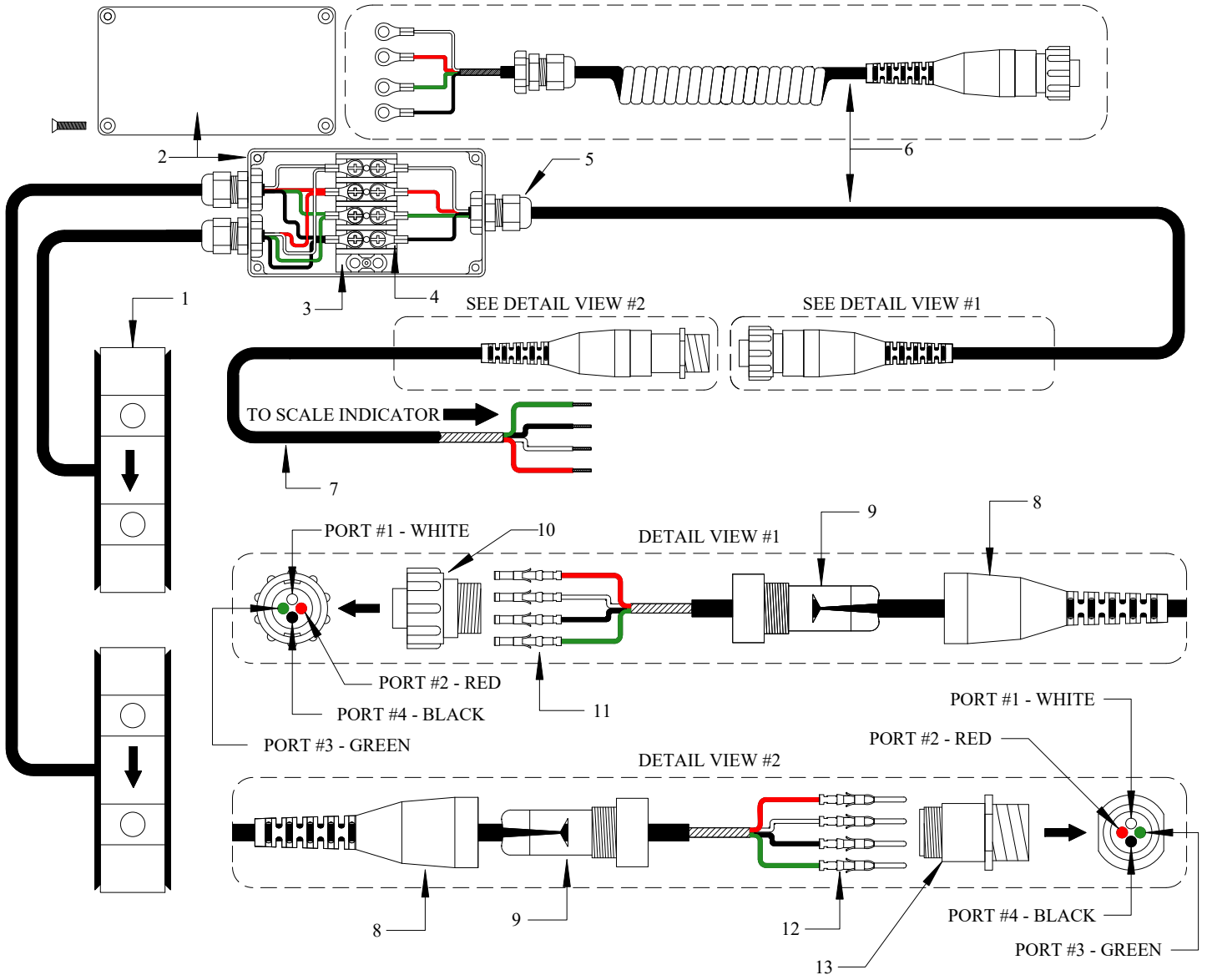
<u>ITEM</u>	<u>PART NO.</u>	<u>DESCRIPTION</u>	<u>QTY</u>
1	7302R	Housing, Double Clamping Mechanism (Black Powder Coating)	1
1	7302RSS	Housing, Double Clamping Mechanism (Stainless Steel)	1
2	10001	Bushing, Housing Yolk Trunion (zinc)	1
3	9107SS	Stainless Steel Upper Jaw (Spark Resistant)	2
4	7107SS	Stainless Steel Lower Jaw (Spark Resistant)	2
5	41041SS	3/8" x 1" Pin, Upper Jaw to Link, short (stainless steel)	2
6	16104-1SS	3/8" x 1.770" Pin, Upper Jaw Link (stainless steel)	6
7	1206	Spring, Jaw to Housing (stainless steel)	2
8	13009-1	Link, Jaw to Jaw (zinc)	4
9	621	Fiber Drum Guard (Black Powder Coating)	2
9	621SS	Fiber Drum Guard (Stainless Steel)	2
10	15104-1SS	3/8" x 2.242" Pin, Fibre Guard, Housing to Clevis (stainless steel)	2
11	7019	3-7/8" Hair Pin Clip (zinc)	2
12	3006-CP	Cotter Pin, 1/8" x 3/4" (zinc)	16
13	1470-6	Custom Washer EG (Stainless Steel)	4
14	6012R	Universal Body (Black Powder Coating)	1
15	1/2-13 x 1 1/2 SHCS	1/2-13 x 1 1/2 Socket Head Cap Screw (zinc)	1
16	1/2 LW	1/2 Lock Washer (zinc)	1
17	1/4-20 x 1 1/4 SHCS	1/4-20 x 1 1/4 Socket Head Cap Screw Alloy Plated	2
18	1/4 LW	1/4 Lock Washer (zinc)	2
19	50064	Spacer (Black Powder Coating)	1
20	64061	Universal Pin (zinc)	1
21	50021R	Upper Pivot Block (Black Powder Coating)	1
22	70062	Spring Roll Pins 1/4 X1-1/2 (zinc) (xref 70641)	1
23	5012R	Lower Pivot Block with Oval Stop Bars (Black Powder Coating)	1
24	8002	Adjustment Slide (FDA Black Powder Coating)	2
25	8996-2	Clevis Spring Hook (Stainless Steel)	1
26	10204-1SS	1/2" x 4-1/2" Adjusting Pin (stainless steel)	1
27	5912R	Upper Clevis 6" (Black Powder Coating)	1
27	5912RZ	Upper Clevis 6" (FDA Powder Coating)	1
28	6912R	Lower Clevis 5 1/2" (Black Powder Coating)	1
28	6912RZ	Lower Clevis 5 1/2" (FDA Powder Coating)	1
29	16033-1	1/2" x 2.625" Pin, Clevis (zinc)	2
30	6006-CP	Cotter Pin, 5/32" x 1" (zinc)	4
31	8206	Clevis Spring (zinc)	2
32	50021RS	Upper Pivot Block (Black Powder Coating - Double Mast)	1
33	5012RS	Lower Pivot Block (Black Powder Coat- Double Mast)	1
34	5912RS	Upper Clevis 4 7/16" (Black Powder Coating - Double Mast)	1
34	5912RZS	Upper Clevis 4 7/16" (FDA Powder Coating - Double Mast)	1
35	6912RS	Lower Clevis 4" (Black Powder Coating - Double Mast)	1
35	6912RZS	Lower Clevis 4" (FDA Powder Coating - Double Mast)	1
36	HANG-1	3/16 x 1-1/4 Shank Lynch Pin "Hang 1" (9016)	1
 <u>FULL ASSEMBLIES</u>			
	4004R	EG2L Double Clamping Mechanism (Black Powder Coating)	
	4004RS	EG2L Double Clamping Mechanism (Black Powder Coating - Double Mast)	
	4004RSRC	EG2L Double Clamping Mechanism (Stainless Steel Housing - Non-Sparking)	
	4004RSRC-S	EG2L Double Clamping Mechanism (Stainless Steel Housing - Non-Sparking- Double Mast)	
 <u>PREVENTATIVE MAINTENANCE KITS</u>			
	EG2LPMKIT	EG2LDCM Preventative Maintenance Kit	

**EG2 LIGHT DUTY DOUBLE CLAMPING MECHANISM
PREVENTIVE MAINTENANCE KIT PARTS LIST**

<u>PART NO.</u>	<u>DESCRIPTION</u>	<u>QTY</u>
1206	Spring, Jaw to Housing (stainless steel)	2
HANG-1	3/16 x 1-1/4 Shank Lynch Pin "Hang 1" (9016)	1
7019	3-7/8" Hair Pin Clip (zinc)	2
3006-CP	Cotter Pin, 1/8" x 3/4" (zinc)	16
8206	Clevis Spring (zinc)	2
5516E	Optional: Belt Cradle Kit (includes all hardware)	1
WLG	12oz White Lithium Grease	1

THIS PAGE INTENTIONALLY LEFT BLANK

SCALE WIRING ASSEMBLY



SCALE WIRING PARTS LIST

<u>ITEM</u>	<u>PART NO.</u>	<u>DESCRIPTION</u>	<u>QTY</u>
1	HM1000	Load Cell with 4' cable	2
2	CU-124	Terminal Box Enclosure	1
-	7531A34	Two Sided Tape (6" Length)	1
3	7527K64	Terminal Block (Strip) 7/16", 4 circuits	1
4	3A214	Terminal Eyelet	12
5	ZZHEY3208	Cable Fitting	3
6	3530360	Eagle-Grip Scale Cable Assembly (Female End) - 30" Length	1
6	3530351	Scale Cable Assembly (Female End) - 50" Length (48" Mast)	1
6	3530352	Scale Cable Assembly (Female End) - 54" Length (60" Mast)	1
6	3530353	Scale Cable Assembly (Female End) - 60" Length (72" Mast)	1
6	3530354	Scale Cable Assembly (Female End) - 70" Length (84" Mast)	1
6	3530355	Scale Cable Assembly (Female End) - 80" Length (96" Mast)	1
6	3530356	Scale Cable Assembly (Female End) - 90" Length (108" Mast)	1
6	3530357	Scale Cable Assembly (Female End) - 100" Length (120" Mast)	1
6	3530368	Scale Cable Assembly (Female End) - 110" Length (132" Mast)	1
6	3530369	Scale Cable Assembly (Female End) - 120" Length (144" Mast)	1
6	3530358	Scale Coiled Cable Assembly (Female End)	1
7	3530361	Eagle-Grip/Ergo Scale Cable Assembly (Male End) - 24" Length	1
7	3530350	DH/RH, ED/ER, ELDR Scale Cable Assembly (Male End) - 36" Length	1
7	3530379	DH/RH, ED/ER, ELDR Swivel Scale Cable Assembly (Male End) - 48" Length	1
8	AP2074891	Strain Relief	2
9	AP2074901	Cable Grip	2
10	AP2060601	Connector Plug Size 11-4 (Female)	1
11	AP661054	Terminal Socket	4
12	AP661034	Terminal Pin	4
13	AP2061531	Connector Recp CPC 11-4 (Male)	1

Non-Intrinsically Safe Indicators

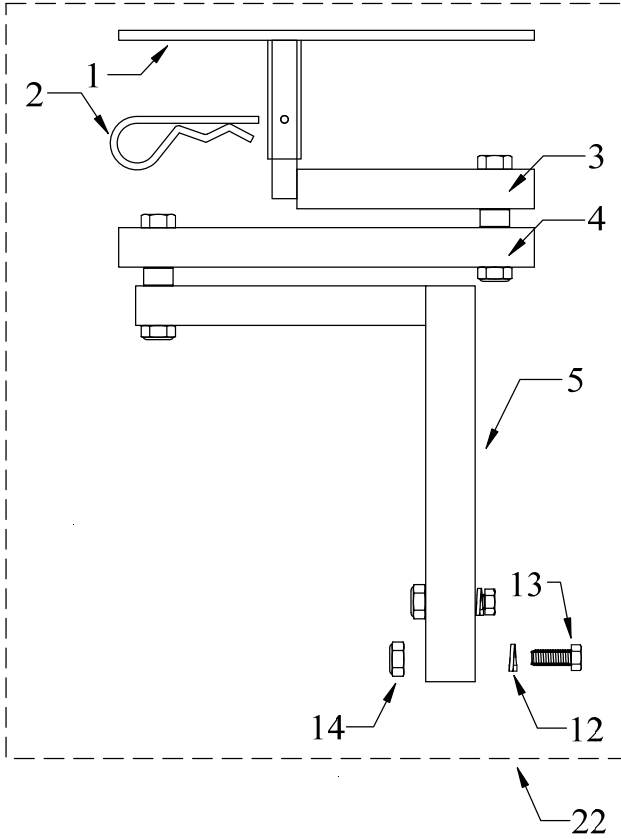
7000XLM	Doran™ 7000XL Non-intrinsically Safe Scale Indicator
SUB0853	Rechargeable Battery, with wire and terminals (2200, 7000, 8000)
2200	Doran™ 2200 Non-intrinsically Safe Scale Indicator (Numeric Keypad)
EXOPT187	Battery Option for Non-Intrinsically Safe 2200 Indicator
164582	Rice Lake 482 Indicator w Internal Battery & Charger
164585	Rice Lake 482 Plus Indicator w Internal Battery & Charger
107708	Rice Lake 720i Indicator

Intrinsically Safe Indicators

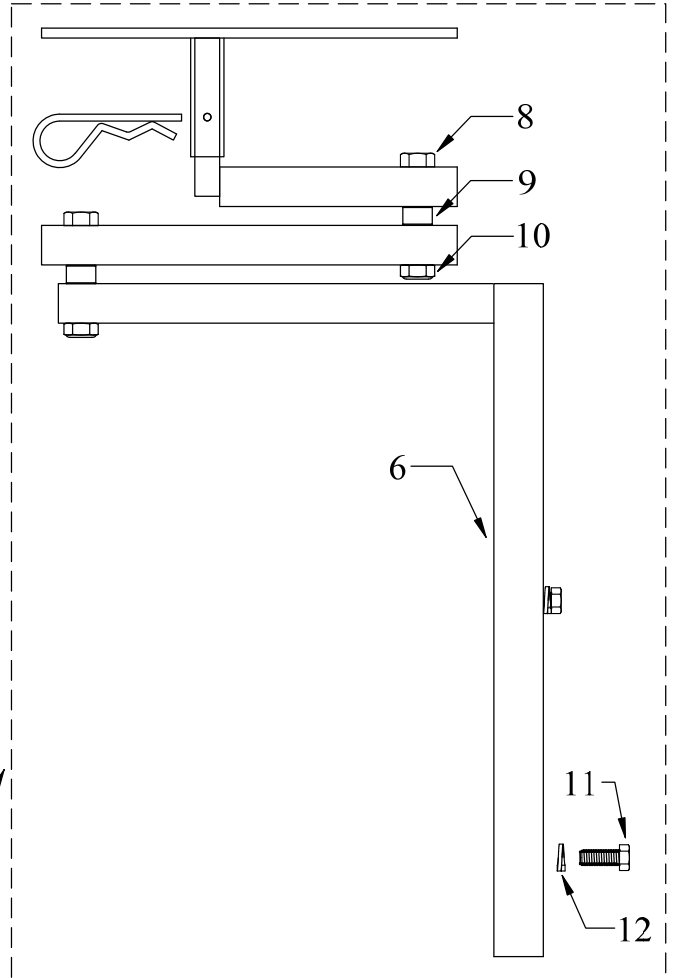
185288	Rice Lake 882IS Indicator w Battery Pack & Safe Area Charger
185291	Rice Lake 882IS PLUS Indicator w Battery Pack & Safe Area Charger
180831	Rice Lake 882IS Battery
194191	Rice Lake 882IS Battery Charger (IS6V2, 100-240 VAC)
72210052	Mettler Toledo IND226x Indicator
72258718	Mettler Toledo IND560x Indicator
64060627	Mettler Toledo EX Indicator Battery (Includes Cable)
64060217	Mettler Toledo Battery Charger (Safe Area, US Plug)

SWIVEL SCALE BRACKET ASSEMBLY

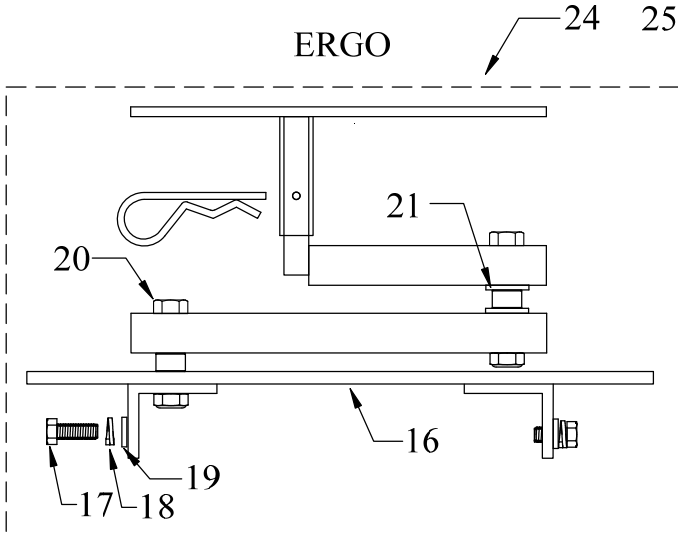
ELDR



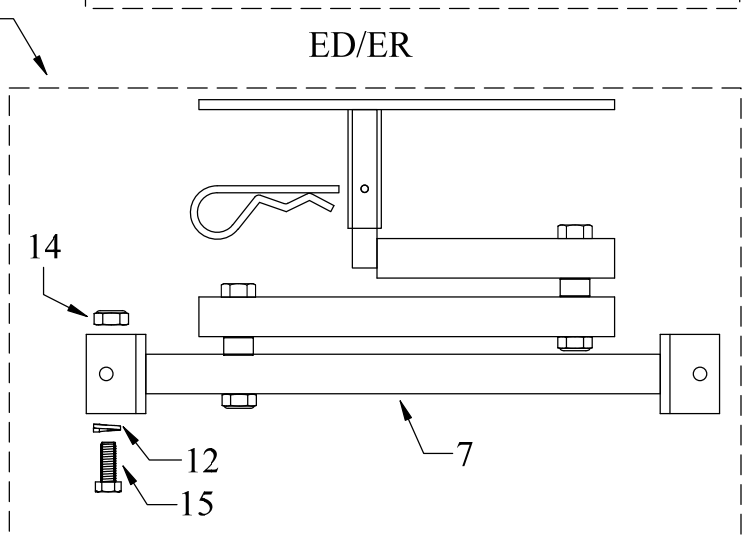
DRUM/ROLL-HAULER



ERGO



ED/ER



SWIVEL SCALE BRACKET PARTS LIST

<u>ITEM</u>	<u>PART NO.</u>	<u>DESCRIPTION</u>	<u>QTY</u>
1	3530348	Indicator Mount Bracket With Tube	1
2	98335A094	Zinc-plated steel cotter pin, 7/8"-1 D, 3-3/4 L	1
3	2580309	Scale Swing Bracket Post Bracket	1
4	2580308	Scale Swing Bracket Mid Bracket	1
5	2580310	ELDR Swivel Scale Bracket Frame Mount	1
6	3530349	DH Swivel Scale Bracket Base Mount	1
7	2580307	ED Swivel Scale Bracket Frame Mount	1
8	1/2-13 x 3 HHCS	1/2-13 x 3 Hex Head Cap Screw Grade 5 (zinc)	2
9	10001	Bushing, Housing Yolk Trunion (zinc)	2
10	1/2-13 THIN NLN	1/2-13 Nylon Locking Nut (THIN)	2
11	5/16-18 x 3/4 HHCS	5/16-18 x 3/4 Hex Head Cap Screw Grade 5 (zinc)	2
12	5/16 LW	5/16 Lock Washer (zinc)	2
13	5/16-18 x 1 HHCS	5/16-18 x 1 Hex Head Cap Screw Grade 5 (zinc)	2
14	5/16-18 HN	5/16-18 Finished Hex Nut (zinc)	2
15	5/16-18 x 1 3/4 HHCS	5/16-18 x 1 3/4 Hex Head Cap Screw (zinc)	2
16	2580306	Ergo Scale Mount - 1.5" High	1
16	3530396	Ergo Scale Mount - 6.5" High	1
17	1/4-20 x 3/4 HHCS	1/4-20 x 3/4 Hex Head Cap Screw Grade 5 (zinc)	2
18	1/4 LW	1/4 Lock Washer (zinc)	2
19	1/4 FW SAE	1/4 Flat Washer SAE (zinc)	2
20	1/2-13 x 2 1/2 HHCS	1/2-13 x 2 1/2 Hex Head Cap Screw Grade 5 (zinc)	1
21	1/2 FW	1/2 Flat Washer (zinc)	2
 <u>FULL ASSEMBLY</u>			
22	3530402	ELDR Scale Swing Out Bracket Assembly	1
23	3530403	DH / RH Scale Swing Out Bracket Assembly	1
24	3530404	Ergo Scale Swing Out Bracket 1.5" Assembly	1
24	3530405	Ergo Scale Swing Out Bracket 6.5" Assembly	1
25	3530406	ED / ER Scale Swing Out Bracket Assembly	1